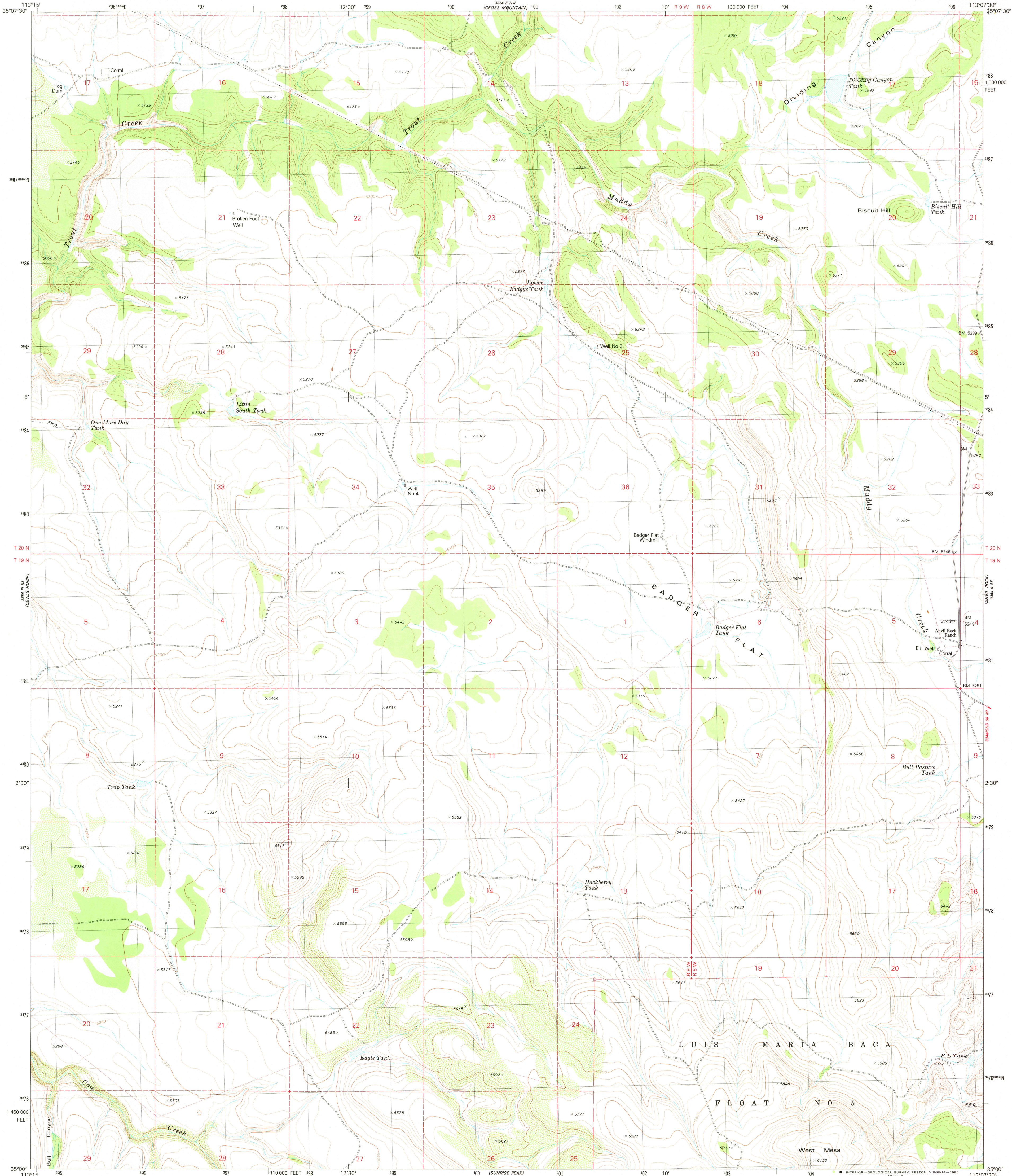
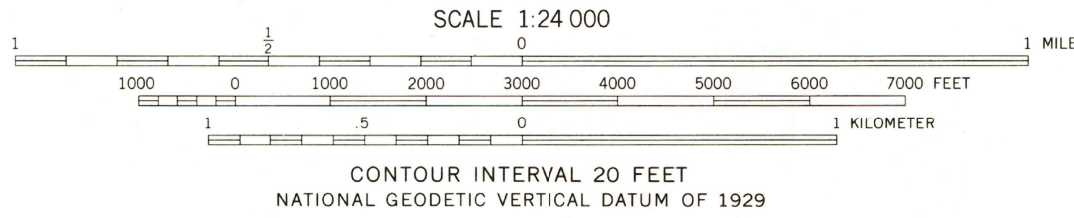
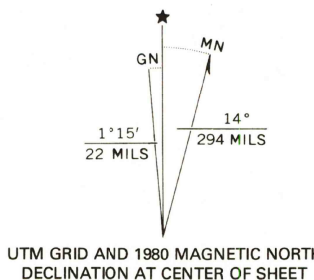


UNITED STATES  
DEPARTMENT OF THE INTERIOR  
GEOLOGICAL SURVEY

ANVIL ROCK RANCH QUADRANGLE  
ARIZONA-YAVAPAI CO.  
7.5 MINUTE SERIES (TOPOGRAPHIC)



Mapped, edited, and published by the Geological Survey  
Control by USGS and NOS/NOAA  
Topography by photogrammetric methods from aerial  
photographs taken 1973. Field checked 1975  
Map edited 1980  
Projection and 10,000-foot grid ticks: Arizona coordinate  
system, central zone (transverse Mercator)  
1000-meter Universal Transverse Mercator grid, zone 12  
1927 North American Datum  
To place on the predicted North American Datum 1983  
move the projection lines 2 meters north and  
69 meters east as shown by dashed corner ticks  
Fine red dashed lines indicate selected fence and field lines where  
generally visible on aerial photographs. This information is unchecked



ROAD CLASSIFICATION  
Primary highway, hard surface  
Secondary highway, hard surface  
Unimproved road  
Interstate Route  
U. S. Route  
State Route

USGS  
Historical File  
Topographic Division  
ANVIL ROCK RANCH, ARIZ.  
N3500-W11307.5/7.5  
1980

DMA 3354 II SW-SERIES 8988