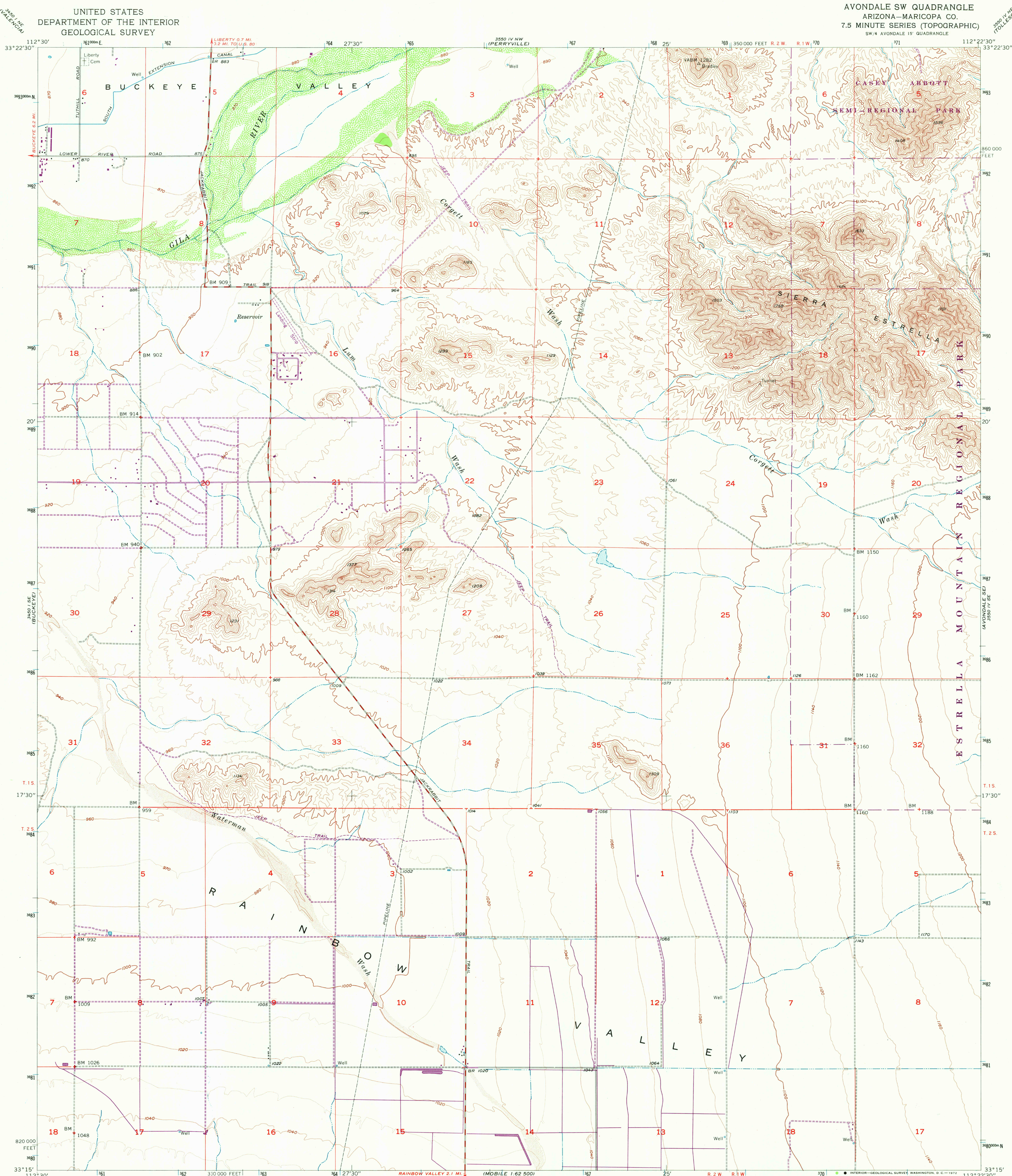
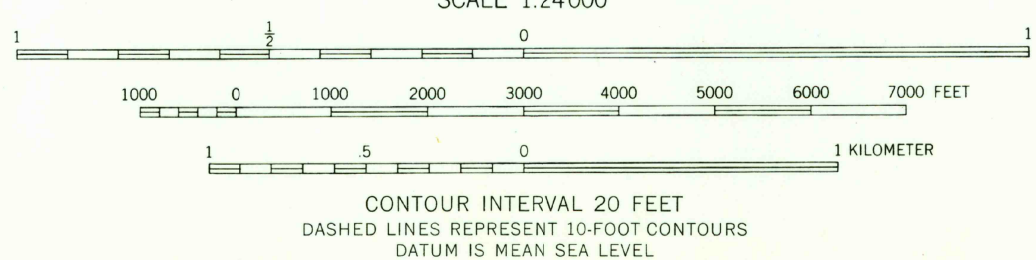
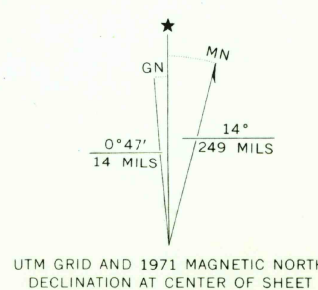


UNITED STATES
DEPARTMENT OF THE INTERIOR
GEOLOGICAL SURVEY

AVONDALE SW QUADRANGLE
ARIZONA-MARICOPA CO.
7.5 MINUTE SERIES (TOPOGRAPHIC)
SW/4 AVONDALE 15' QUADRANGLE



Mapped, edited, and published by the Geological Survey
Control by USGS and USC&GS
Topography from aerial photographs by Kelsh plotter
and by planetable surveys 1957.
Polyconic projection. 1927 North American datum
10,000-foot grid based on Arizona coordinate system,
central zone
1000-meter Universal Transverse Mercator grid ticks,
zone 12, shown in blue
Revisions shown in purple compiled from aerial photographs
taken 1971. This information not field checked



THIS MAP COMPLIES WITH NATIONAL MAP ACCURACY STANDARDS
FOR SALE BY U. S. GEOLOGICAL SURVEY, DENVER, COLORADO 80225, OR WASHINGTON, D. C. 20242
A FOLDER DESCRIBING TOPOGRAPHIC MAPS AND SYMBOLS IS AVAILABLE ON REQUEST



ROAD CLASSIFICATION
Medium-duty ——— Light-duty ———
Unimproved dirt - - - - -
AVONDALE SW, ARIZ.
SW/4 AVONDALE 15' QUADRANGLE
N3315-W11222.5/7.5
1957
PHOTOREVISED 1971
AMS 3550 IV SW-SERIES V898

MAR 15 1972

3410