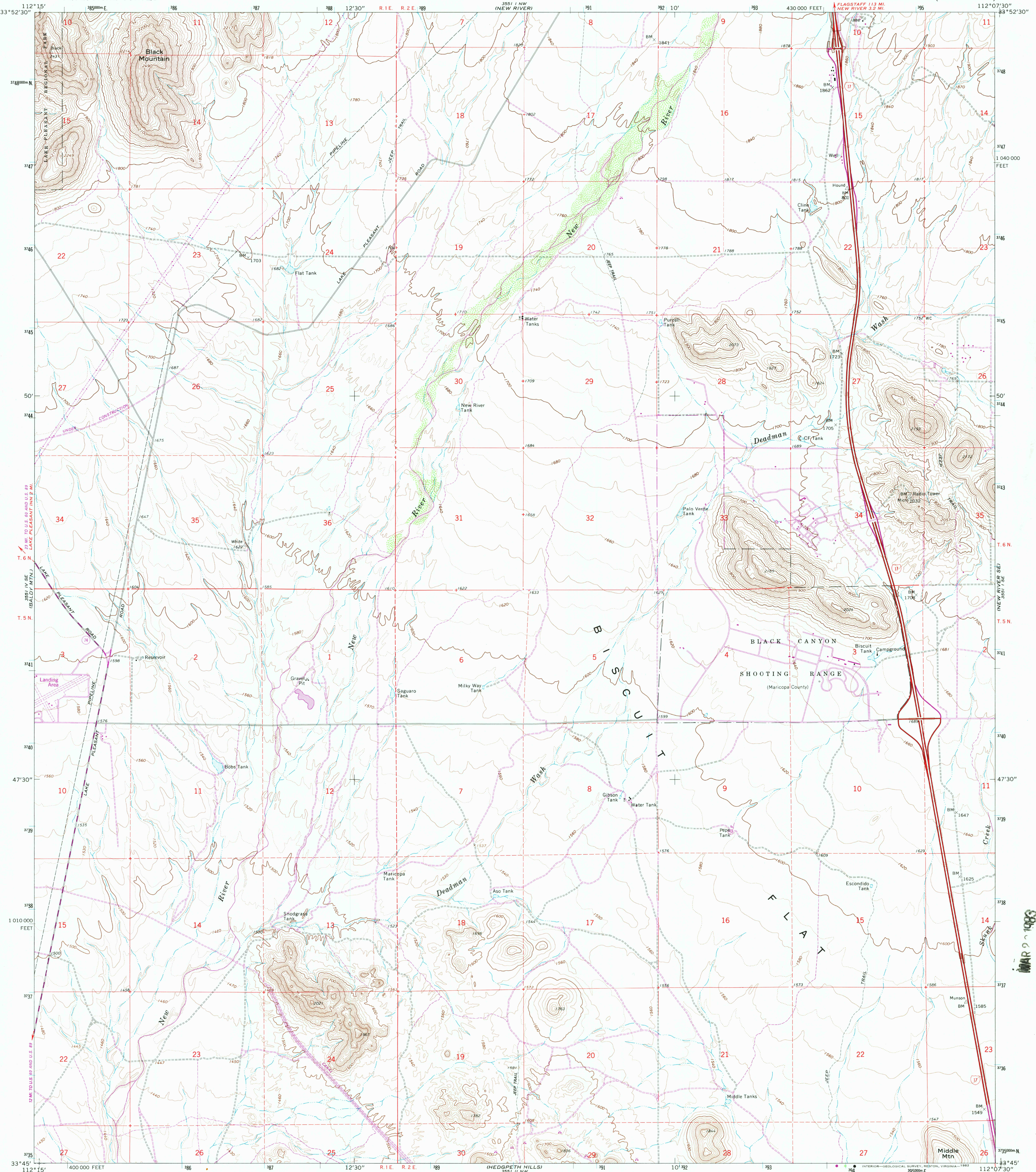
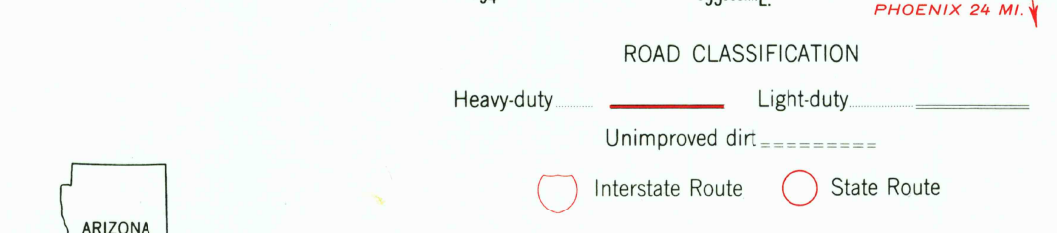
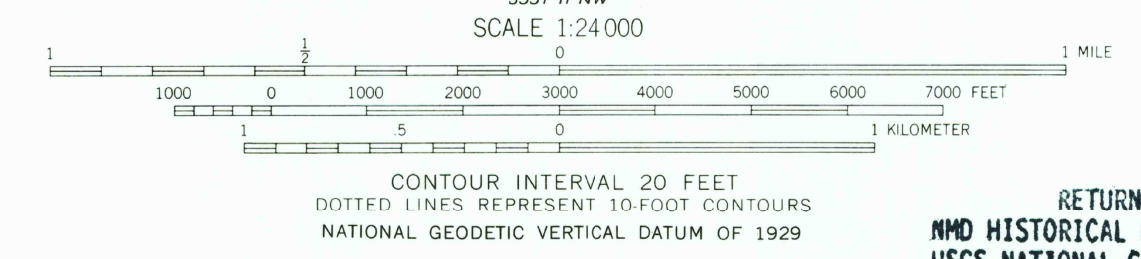
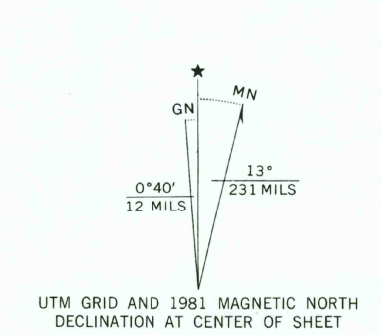


UNITED STATES  
DEPARTMENT OF THE INTERIOR  
GEOLOGICAL SURVEY

BISCUIT FLAT QUADRANGLE  
ARIZONA-MARICOPA CO.  
7.5 MINUTE SERIES (TOPOGRAPHIC)



Mapped, edited and published by the Geological Survey  
Control by USGS and NOS/NOAA  
Topography by photogrammetric methods from aerial photographs taken 1962. Field checked 1965  
Polyconic projection. 10,000-foot grid ticks based on Arizona coordinate system, central zone  
1000-meter Universal Transverse Mercator grid ticks, zone 12, shown in blue. 1927 North American Datum  
To place on the predicted North American Datum 1983 move the projection lines 1 meter south and 66 meters east as shown by dashed corner ticks  
Fine red dashed lines indicate selected fence lines  
There may be private inholdings within the boundaries of the National or State reservations shown on this map



RETURN TO:  
NHD HISTORICAL MAP ARCHIVES  
USGS NATIONAL CENTER, MS-522  
RESTON, VA 22092

THIS MAP COMPLIES WITH NATIONAL MAP ACCURACY STANDARDS  
FOR SALE BY U.S. GEOLOGICAL SURVEY, DENVER, COLORADO 80225, OR RESTON, VIRGINIA 22092  
A FOLDER DESCRIBING TOPOGRAPHIC MAPS AND SYMBOLS IS AVAILABLE ON REQUEST

Revisions shown in purple and woodland compiled from aerial photographs taken 1978 and other sources. This information not field checked. Map edited 1981

BISCUIT FLAT, ARIZ.  
N3345-W11207.5/7.5  
1965  
PHOTOREVISED 1981  
DMA 3551 I SW-SERIES V898

MAR 9 1983

3200