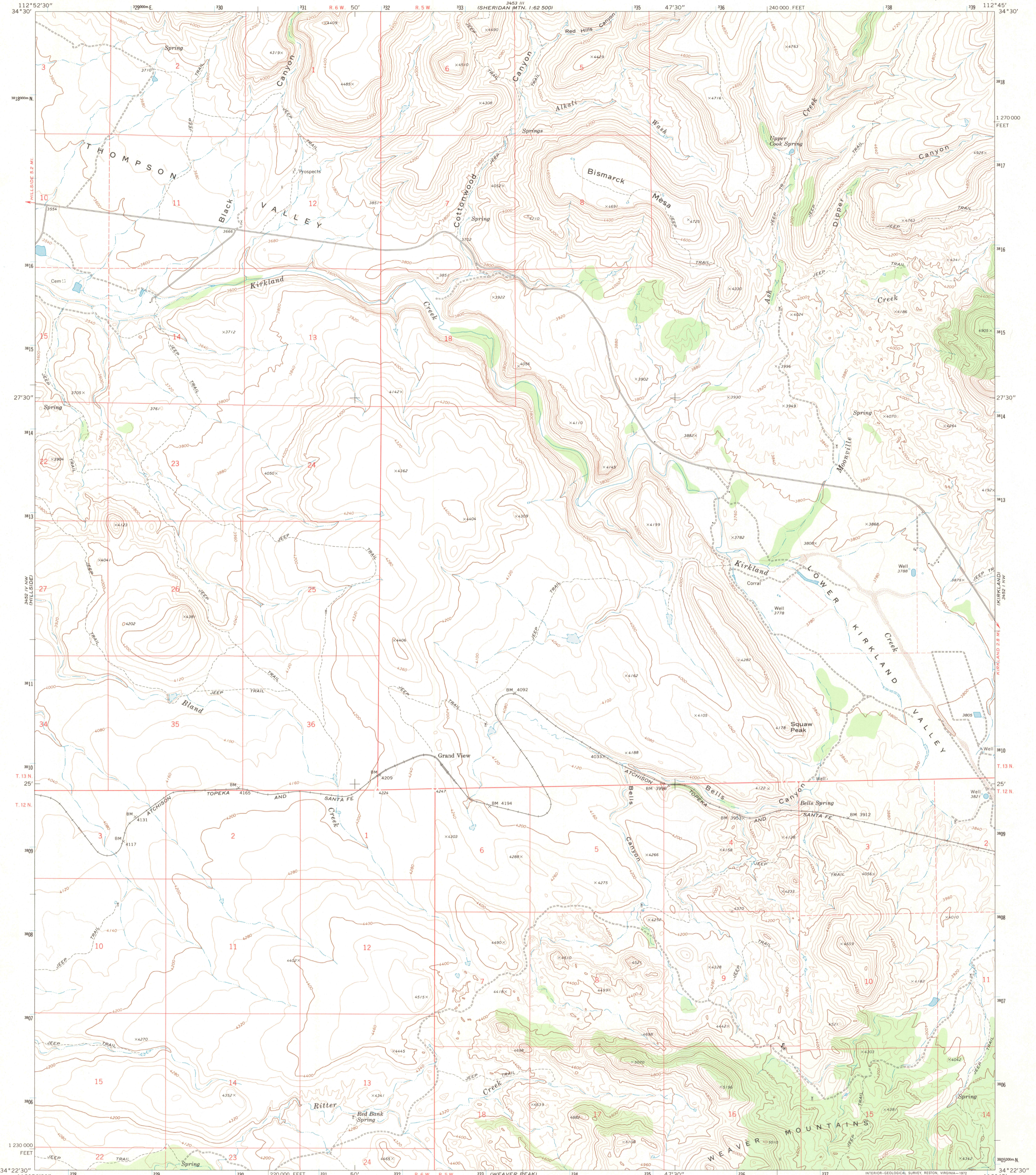


SHERIDAN MOUNTAINS
3452 IV NE
1:25,000

3452 IV NE
1:25,000
SHERIDAN MOUNTAINS

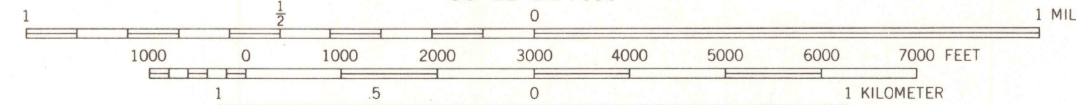
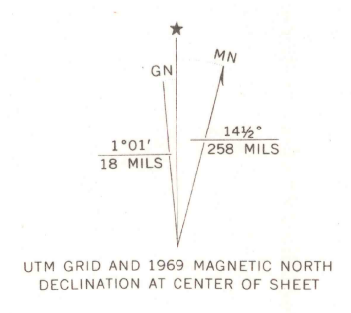
UNITED STATES
DEPARTMENT OF THE INTERIOR
GEOLOGICAL SURVEY

BISMARCK MESA QUADRANGLE
ARIZONA—YAVAPAI CO.
7.5 MINUTE SERIES (TOPOGRAPHIC)



112°52'30" 122000 FEET 330 50' 332 R. 6 W. R. 5 W. 333 (SHERIDAN MOUNTAINS 1:62 500) 335 47'30" 336 240 000 FEET 338 112°45' 34°30' 318000 N. 127000 FEET 317 316 315 314 313 312 311 310 309 308 307 306 305000 N. 123000 FEET 34°22'30" 112°52'30" 328 220 000 FEET 331 50' 332 R. 6 W. R. 5 W. 333 (WEAVER PEAK) 3452 IV NE 338000 E 334 47'30" 336 240 000 FEET 337 112°45' 34°22'30"

Mapped, edited, and published by the Geological Survey
Control by USGS and USC&GS
Topography by photogrammetric methods from aerial photographs taken 1968. Field checked 1969
Polyconic projection. 1927 North American datum
10,000-foot grid based on Arizona coordinate system, central zone
1000-meter Universal Transverse Mercator grid ticks, zone 12, shown in blue
Fine red dashed lines indicate selected fence lines
Certain land lines are omitted because of insufficient data

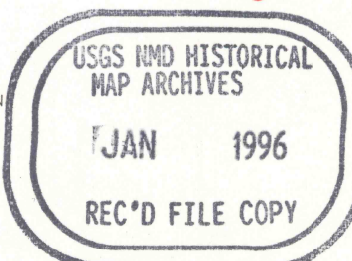


CONTOUR INTERVAL 40 FEET
DOTTED LINES REPRESENT 20-FOOT CONTOURS
DATUM IS MEAN SEA LEVEL

THIS MAP COMPLIES WITH NATIONAL MAP ACCURACY STANDARDS
FOR SALE BY U.S. GEOLOGICAL SURVEY
DENVER, COLORADO 80225, OR RESTON, VIRGINIA 22092
A FOLDER DESCRIBING TOPOGRAPHIC MAPS AND SYMBOLS IS AVAILABLE ON REQUEST

ROAD CLASSIFICATION

Primary highway, hard surface	Light-duty road, hard or improved surface
Secondary highway, hard surface	Unimproved road
Interstate Route	U. S. Route
	State Route



BISMARCK MESA, ARIZ.
N3422.5—W11245.7.5
1969
AMS 3452 IV NE—SERIES V898

