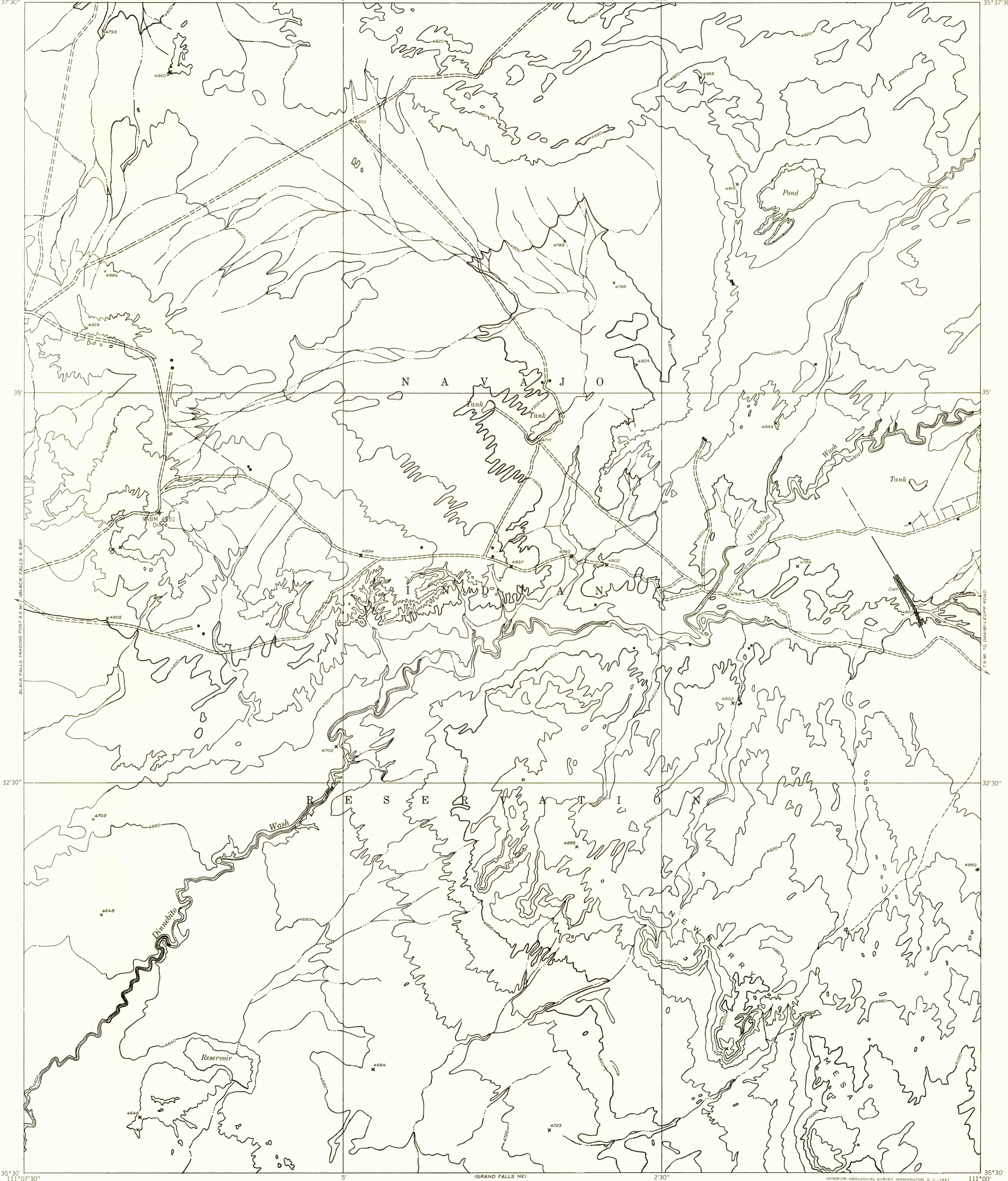
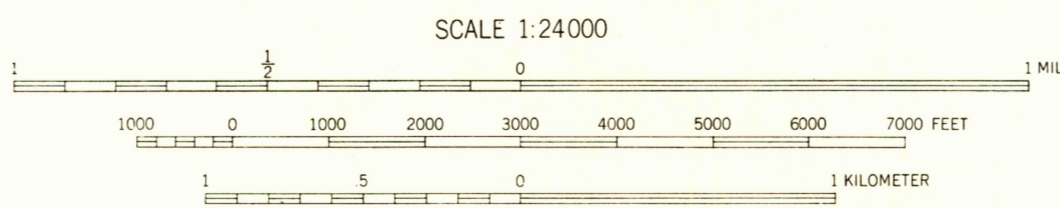
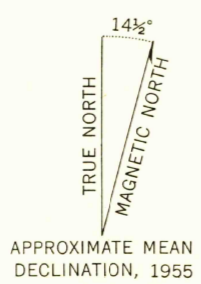


111°07'30"  
35°37'30"

111°00'  
35°37'30"



Mapped by the Geological Survey 1955  
Topography by multiplex methods from  
aerial photographs taken 1953  
Symbols and other detail herein  
drawn for 1:62 500 scale publication



CONTOUR INTERVAL 40 FEET  
DATUM IS MEAN SEA LEVEL

USGS  
Historical File  
Topographic Division

U.S.G.S.  
FILE COPY  
TOPOGRAPHIC DIVISION

ROAD CLASSIFICATION  
Improved ——— Unimproved - - - - -

BLACK FALLS 4 SE, ARIZ.  
N3530-W11100/7.5

INWELCOW 2 NW

MAY 23 1957  
2060