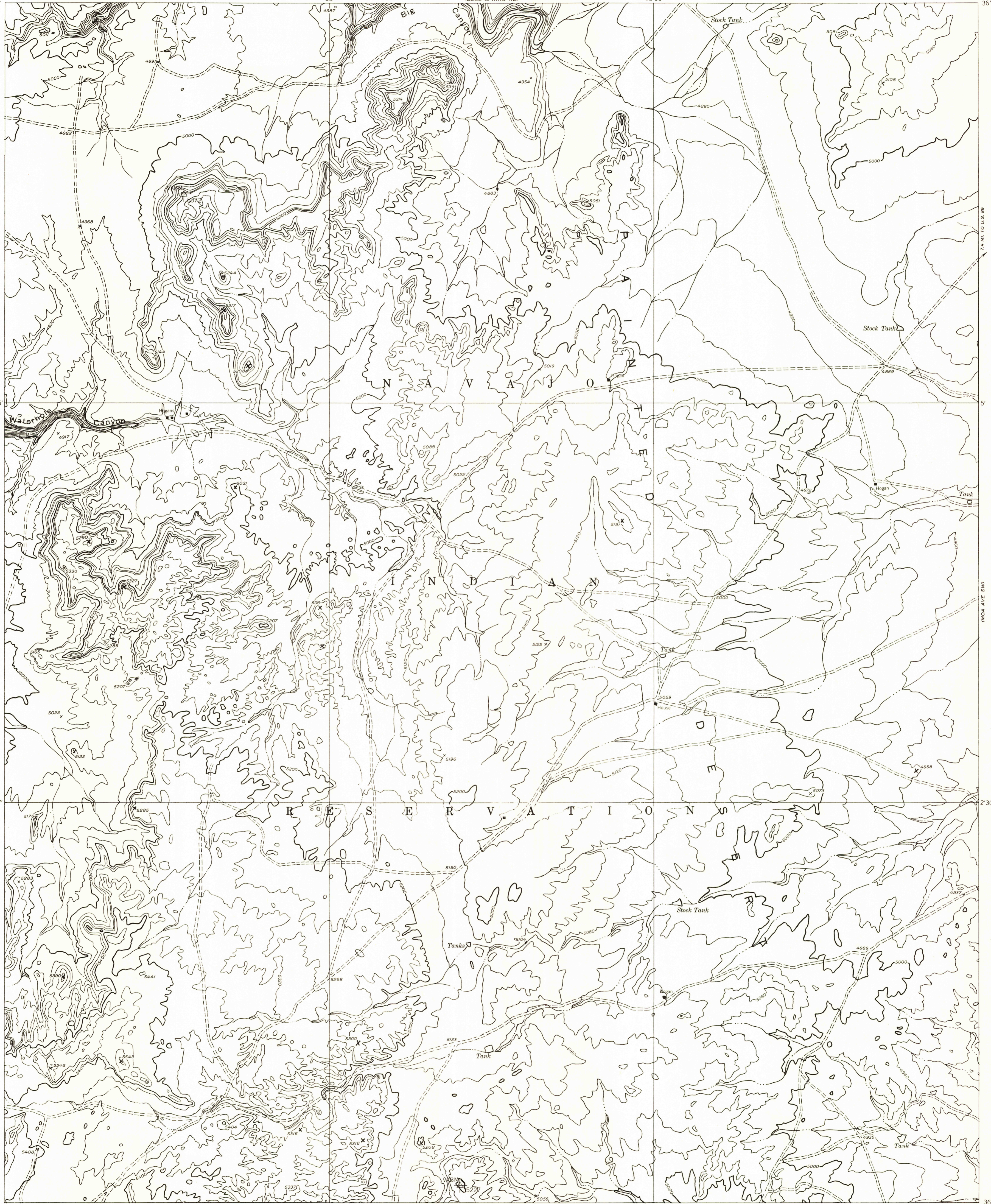


111°37'30"
36°07'30"

111°30'
36°07'30"

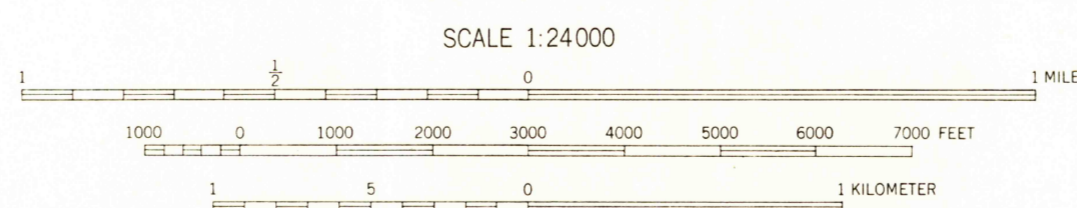


36°00'
111°37'30"

36°00'
111°30"

Mapped by the Geological Survey 1955
Topography by multiplex methods from
aerial photographs taken 1953
Symbols and other detail herein
drawn for 1:62,500 scale publication

14 1/2°
TRUE NORTH
MAGNETIC NORTH
APPROXIMATE MEAN
DECLINATION, 1948



SCALE 1:24,000
CONTOUR INTERVAL 40 FEET
DATUM IS MEAN SEA LEVEL

USGS
Historical File
Topographic Division

ROAD CLASSIFICATION
Improved ——— Unimproved - - - - -

U.S.G.S.
FILE COPY
TOPOGRAPHIC DIVISION

BLUE SPRING SE, ARIZ.
N3600-W11130/7.5

JUN - 3 1957

45

2040