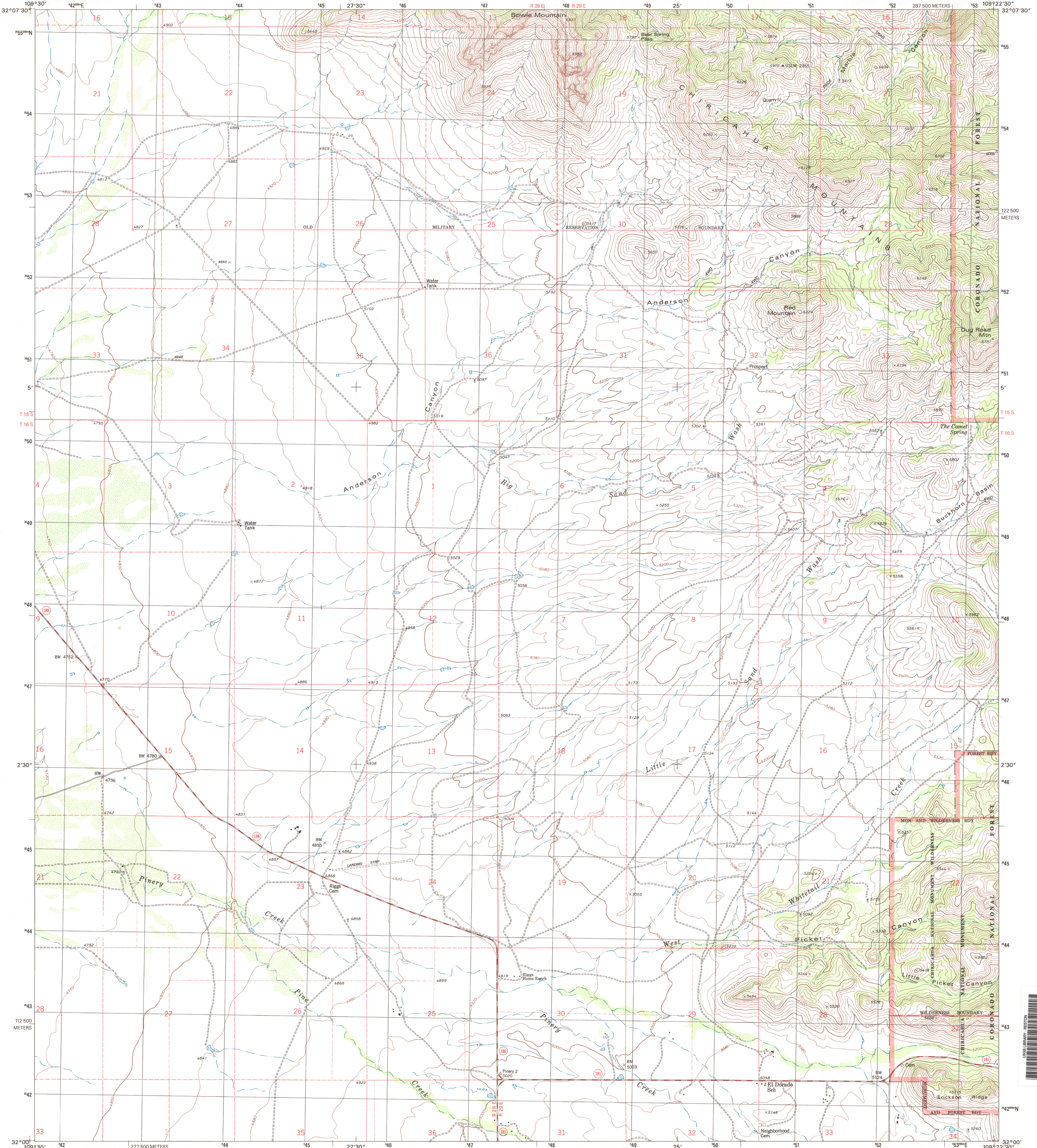


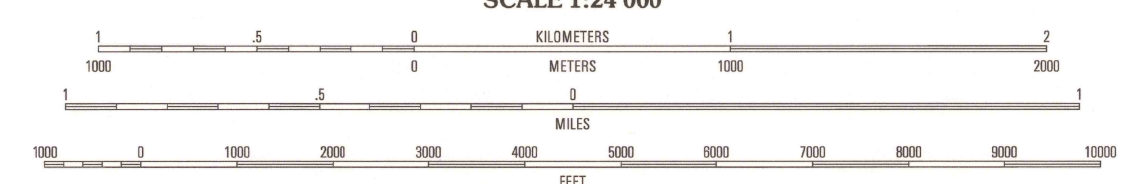
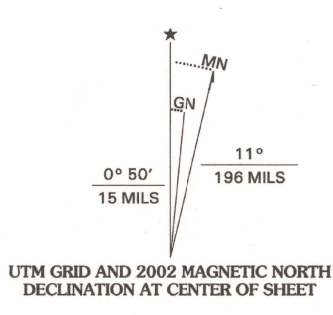


U.S. DEPARTMENT OF THE INTERIOR  
U.S. GEOLOGICAL SURVEY

BOWIE MOUNTAIN SOUTH QUADRANGLE  
ARIZONA-COCHISE CO.  
7.5-MINUTE SERIES (TOPOGRAPHIC)



Produced by the United States Geological Survey  
Topography compiled 1973. Planimetry derived from imagery taken 1996 and other sources. Public Land Survey System and survey control current as of 1974. Boundaries current as of 2001 North American Datum of 1983 (NAD 83). Projection and 1,000-meter grid: Universal Transverse Mercator, zone 12 (east zone).  
North American Datum of 1927 (NAD 27) is shown by dashed corner ticks. The values of the shift between NAD 83 and NAD 27 for 7.5-minute intersections are obtainable from National Geodetic Survey NADCON software.  
There may be private inholdings within the boundaries of the National or State reservations shown on this map.  
Where omitted, land lines have not been established.  
Houses of worship, schools, and other labeled buildings verified 1974.



CONTOUR INTERVAL 40 FEET  
NATIONAL GEODETIC VERTICAL DATUM OF 1929  
(TO CONVERT ELEVATIONS TO THE NORTH AMERICAN VERTICAL DATUM OF 1988, ADD 3 FEET)  
TO CONVERT FROM FEET TO METERS, MULTIPLY BY 0.3048

THIS MAP COMPLIES WITH NATIONAL MAP ACCURACY STANDARDS  
FOR SALE BY U.S. GEOLOGICAL SURVEY, P. O. BOX 25286, DENVER, COLORADO 80225  
A FOLDER DESCRIBING TOPOGRAPHIC MAPS AND SYMBOLS IS AVAILABLE ON REQUEST



QUADRANGLE LOCATION

1	2	3
4	5	6
7	8	

ADJOINING 7.5 QUADRANGLES

ROAD CLASSIFICATION

- Primary highway hard surface
- Secondary highway hard surface
- Unimproved road
- Light-duty road, hard or improved surface
- Interstate Route
- U.S. Route
- State Route

BOWIE MOUNTAIN SOUTH, AZ  
1996  
NIMA 4148 III SW-SERIES V898

U.S. GEOLOGICAL SURVEY  
LIBRARY  
MAR 25 2003  
RESTON, VA

