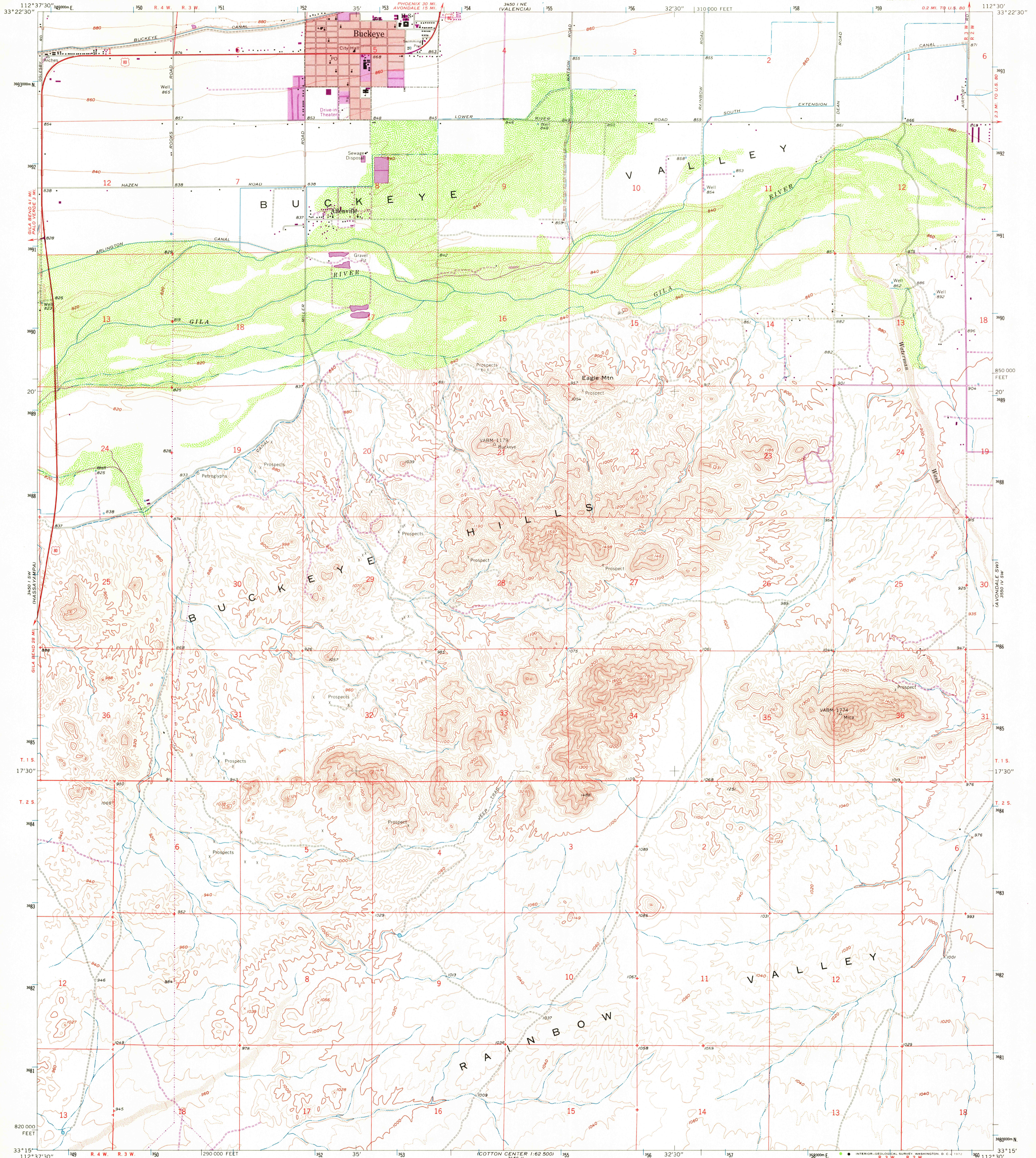
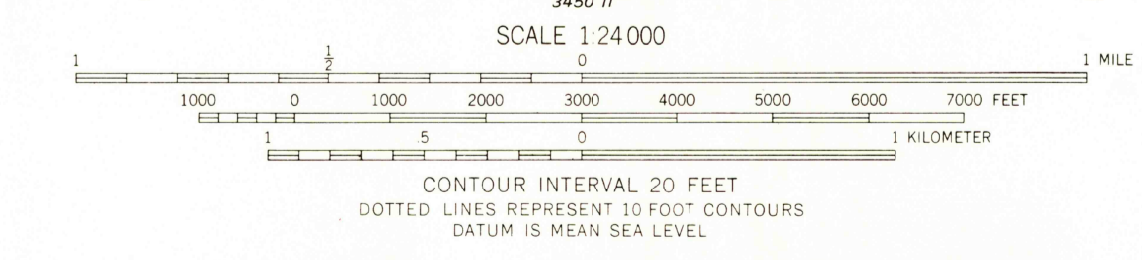
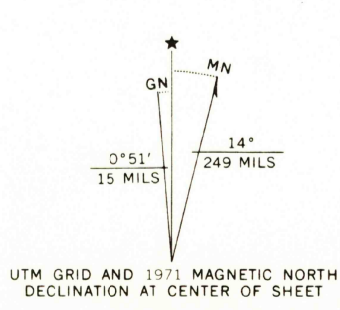


UNITED STATES
DEPARTMENT OF THE INTERIOR
GEOLOGICAL SURVEY

BUCKEYE QUADRANGLE
ARIZONA—MARICOPA CO.
7.5 MINUTE SERIES (TOPOGRAPHIC)
SE/4 BUCKEYE 15' QUADRANGLE



Mapped, edited, and published by the Geological Survey
Control by USGS and USC&GS
Topography from aerial photographs by ER-55 plotter
and by planetable surveys 1958. Aerial photographs taken 1955
Polyconic projection. 1927 North American datum
10,000-foot grid based on Arizona coordinate system,
central zone
1000-meter Universal Transverse Mercator grid ticks,
zone 12, shown in blue
Red tint indicates area in which only
landmark buildings are shown
Revisions shown in purple compiled from aerial photographs
taken 1971. This information not field checked
Purple tint indicates extension of urban areas



ROAD CLASSIFICATION

- Heavy-duty
- Light-duty
- Medium-duty
- Unimproved dirt
- U. S. Route

BUCKEYE, ARIZ.
SE/4 BUCKEYE 15' QUADRANGLE
N3315—W11230/7.5
1958
PHOTOREVISED 1971
AMS 3450 I SE—SERIES V898



THIS MAP COMPLIES WITH NATIONAL MAP ACCURACY STANDARDS
FOR SALE BY U. S. GEOLOGICAL SURVEY, DENVER, COLORADO 80225, OR WASHINGTON, D. C. 20242
A FOLDER DESCRIBING TOPOGRAPHIC MAPS AND SYMBOLS IS AVAILABLE ON REQUEST

MAR 15 1972

3410