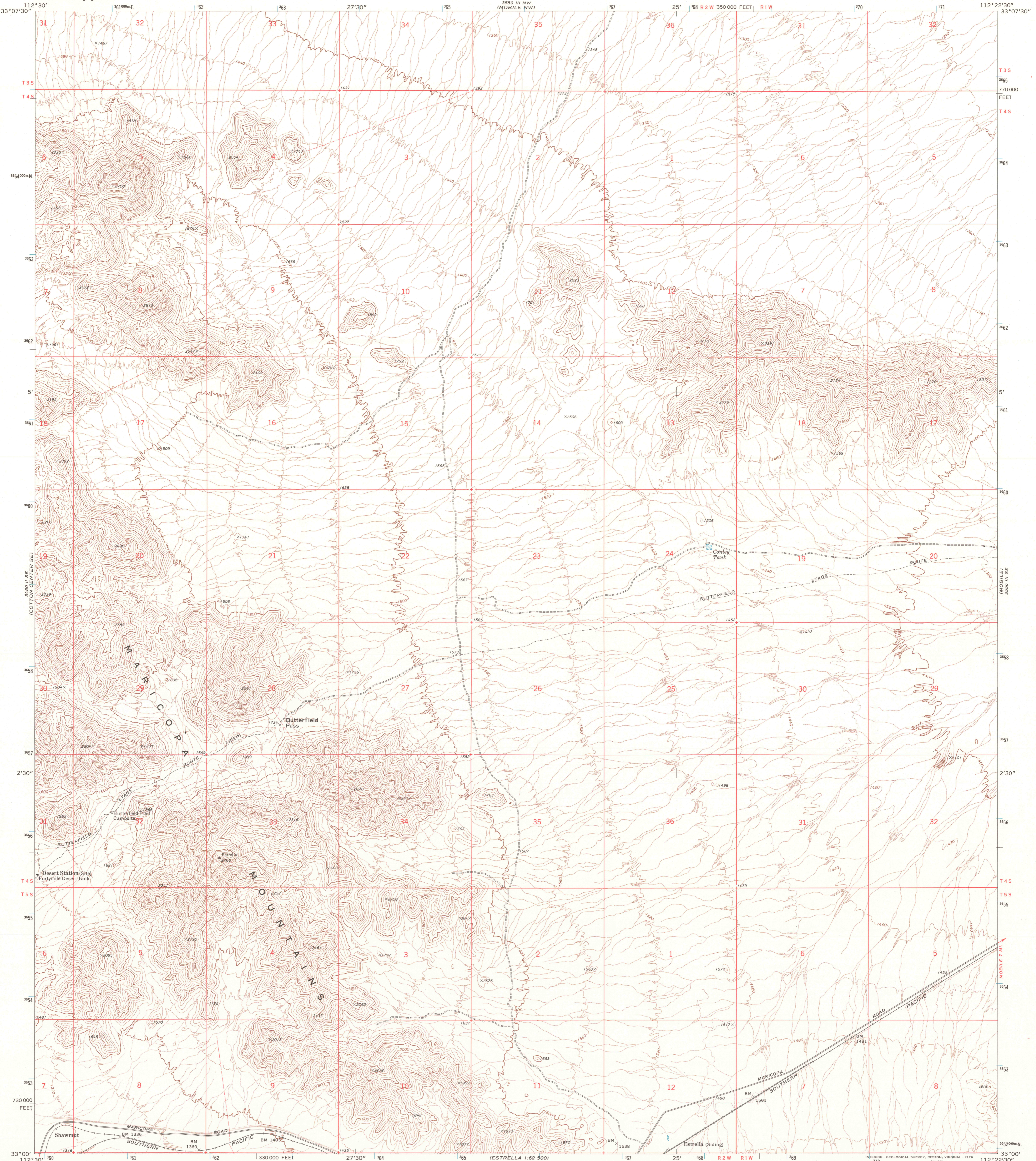


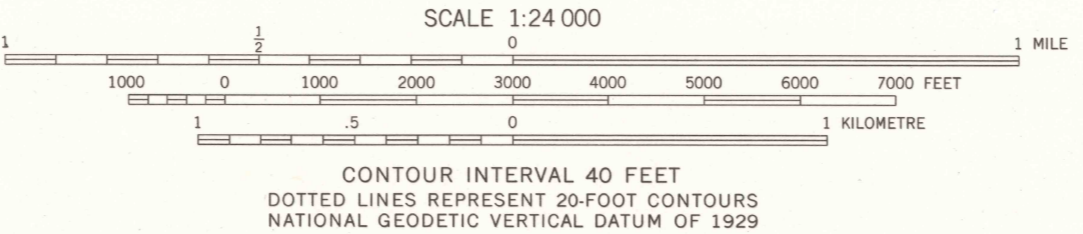
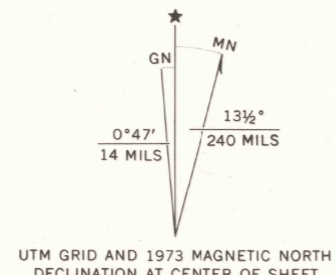


U.S. DEPARTMENT OF THE INTERIOR  
U.S. GEOLOGICAL SURVEY

BUTTERFIELD PASS QUADRANGLE  
ARIZONA—MARICOPA CO.  
7.5 MINUTE SERIES (TOPOGRAPHIC)  
SW/4 MOBILE 15' QUADRANGLE



Mapped, edited, and published by the Geological Survey  
Control by USGS and NOS/NOAA  
Topography by photogrammetric methods from aerial photographs taken 1972. Field checked 1973  
Projection and 10,000-foot grid ticks: Arizona coordinate system, central zone (transverse Mercator)  
1000-metre Universal Transverse Mercator grid ticks, zone 12, shown in blue. 1927 North American datum  
Fine red dashed lines indicate selected fence lines



ROAD CLASSIFICATION

- Primary highway, hard surface
- Secondary highway, hard surface
- Interstate Route
- U. S. Route
- State Route
- Light-duty road, hard or improved surface
- Unimproved road

RECEIVED  
SEP 30 2000

BUTTERFIELD PASS, ARIZ.  
SW/4 MOBILE 15' QUADRANGLE  
N3300-W11222.5/7.5  
1973  
AMS 3550 III SW—SERIES V898

THIS MAP COMPLIES WITH NATIONAL MAP ACCURACY STANDARDS  
FOR SALE BY U.S. GEOLOGICAL SURVEY, P.O. BOX 25286, DENVER, COLORADO 80225  
A FOLDER DESCRIBING TOPOGRAPHIC MAPS AND SYMBOLS IS AVAILABLE ON REQUEST

USGS HISTORICAL MAP ARCHIVES

