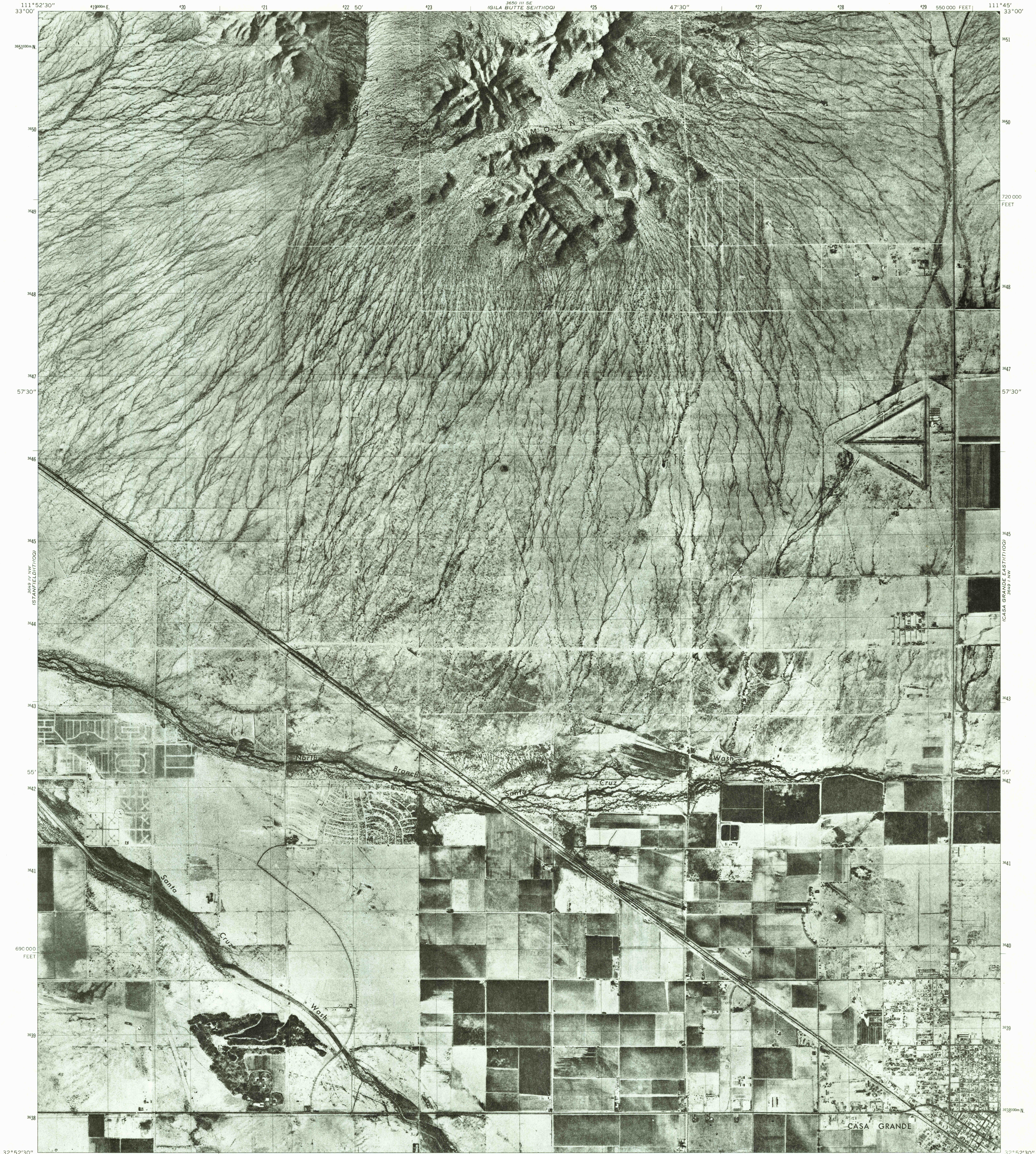
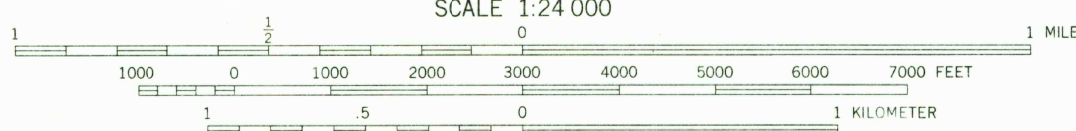
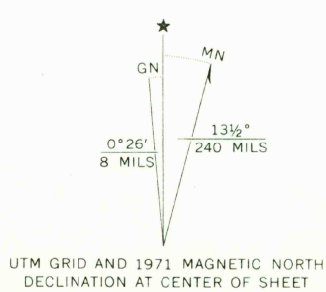


UNITED STATES  
DEPARTMENT OF THE INTERIOR  
GEOLOGICAL SURVEY

CASA GRANDE WEST QUADRANGLE  
ARIZONA—PINAL CO.  
7.5 MINUTE SERIES ORTHOPHOTOQUAD



Prepared and published by the Geological Survey  
Controlled orthophotomosaic by photogrammetric methods  
from 1:78 000-scale aerial photographs taken July 1971  
Transverse Mercator projection. 1927 North American datum  
1000-meter Universal Transverse Mercator grid, zone 12  
10,000-foot grid ticks based on Arizona coordinate system,  
central zone



This quadrangle area also covered by  
1:24 000-scale standard topographic map  
Adjoining map coverage:  
(T) following quadrangle name indicates  
standard topographic map available  
(OQ) following quadrangle name indicates  
orthophotoquad available

CASA GRANDE WEST, ARIZ.  
N3252.5—W11145/7.5

1971

AMS 3649 IV NE—SERIES V868

THIS MAP COMPLIES WITH NATIONAL MAP ACCURACY STANDARDS  
FOR SALE BY U. S. GEOLOGICAL SURVEY, DENVER, COLORADO 80225, OR WASHINGTON, D. C. 20242