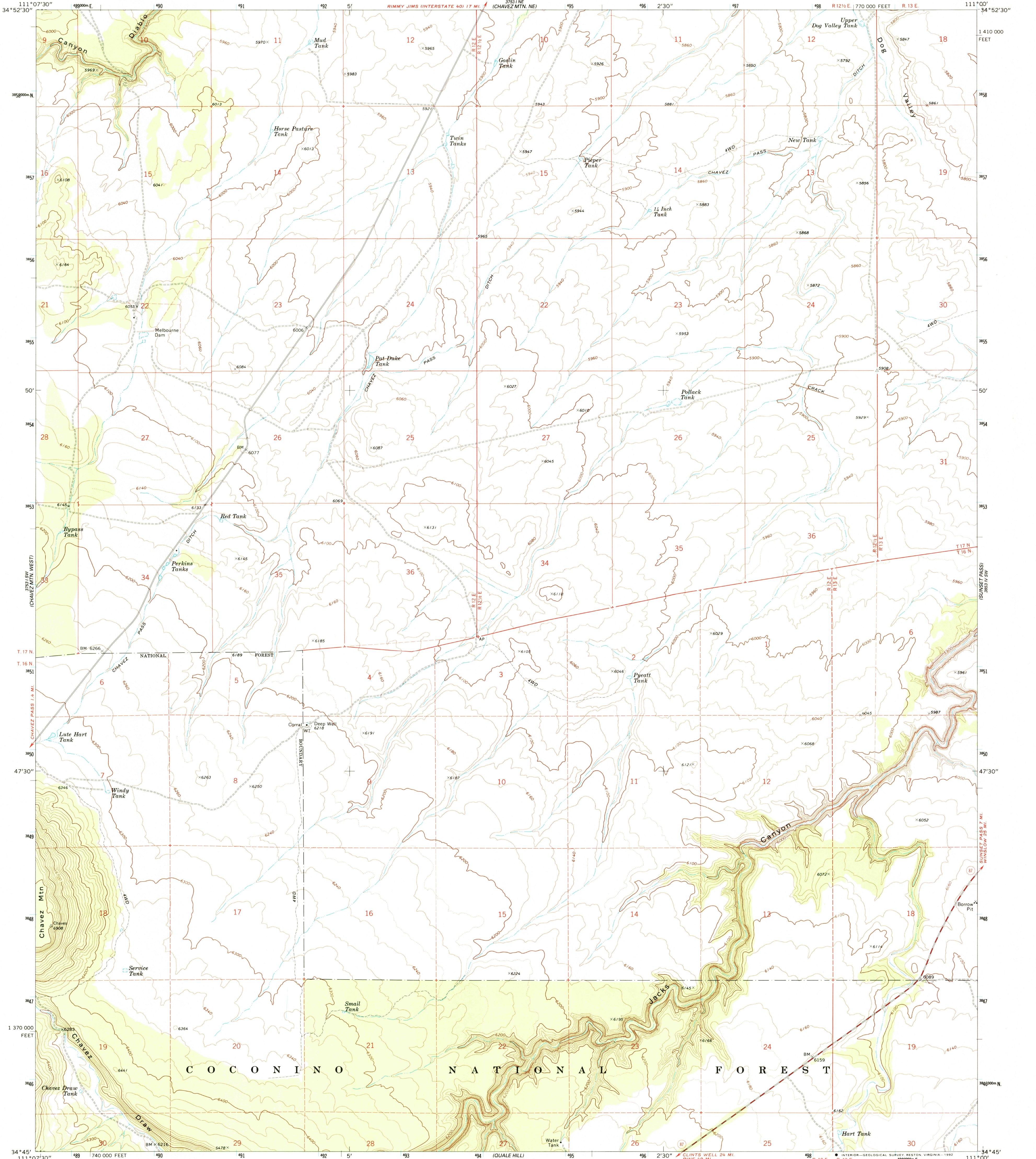
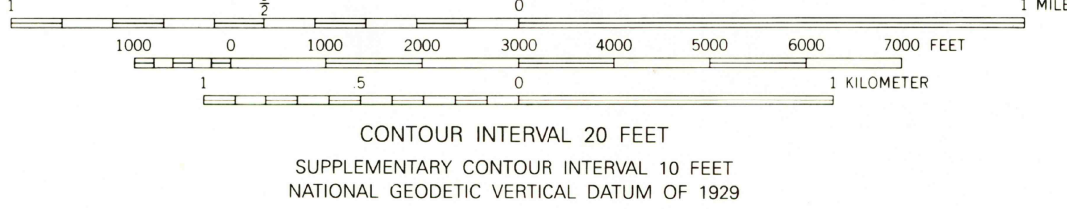
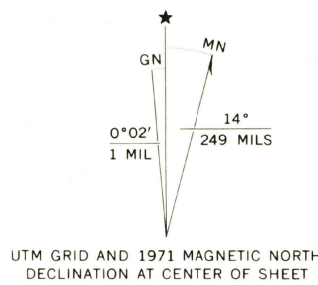


UNITED STATES
DEPARTMENT OF THE INTERIOR
GEOLOGICAL SURVEY

CHAVEZ MTN. EAST QUADRANGLE
ARIZONA-COCONINO CO.
7.5 MINUTE SERIES (TOPOGRAPHIC)



Produced by the United States Geological Survey
Control by USGS and NOS/NOAA
Compiled from aerial photographs taken 1968. Field checked 1971
North American Datum of 1927 (NAD 27). Projection and
10,000-foot grid ticks: Arizona Coordinate System,
central zone (Transverse Mercator)
1000-meter Universal Transverse Mercator grid ticks, zone 12,
shown in blue
The difference between NAD 27 and North American Datum of
1983 (NAD 83) for 7.5 minute intersections is given in USGS
Bulletin 1875. The NAD 83 is shown by dashed corner ticks
There may be private inholdings within the boundaries of the
National or State reservations shown on this map
Fine red dashed lines indicate selected fence lines



THIS MAP COMPLIES WITH NATIONAL MAP ACCURACY STANDARDS
FOR SALE BY U.S. GEOLOGICAL SURVEY
DENVER, COLORADO 80225, OR RESTON, VIRGINIA 22092
A FOLDER DESCRIBING TOPOGRAPHIC MAPS AND SYMBOLS IS AVAILABLE ON REQUEST



ROAD CLASSIFICATION
Primary highway, hard surface
Secondary highway, hard surface
Light-duty road, hard or improved surface
Unimproved road
Interstate Route
U.S. Route
State Route

CHAVEZ MTN. EAST, ARIZ.
34111-G1-TF-024

1971

DMA 3753 I SE-SERIES V898