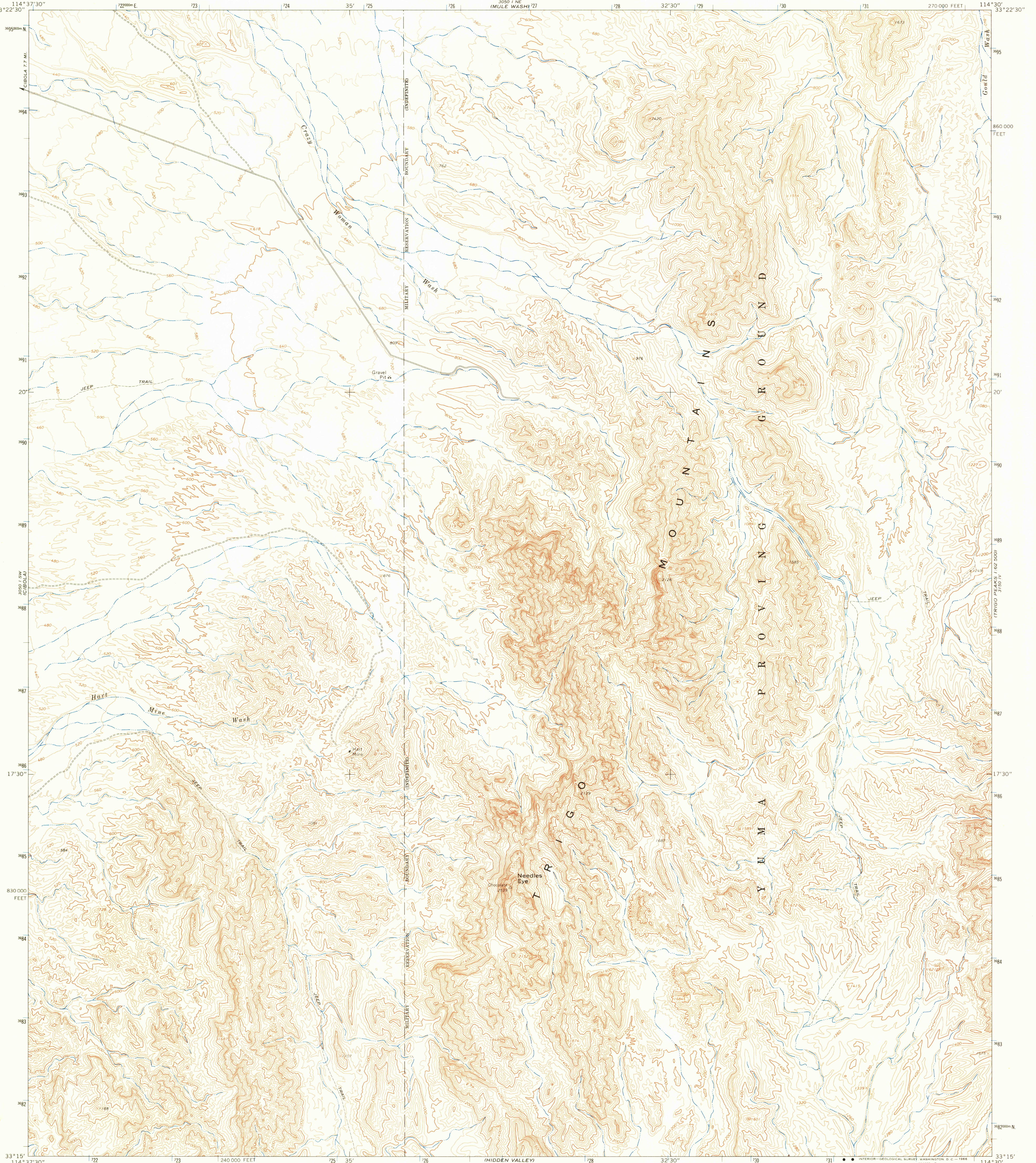


33° 22' 30" N
114° 37' 30" W
CIBOLA 7.5 MIN. QUADRANGLE

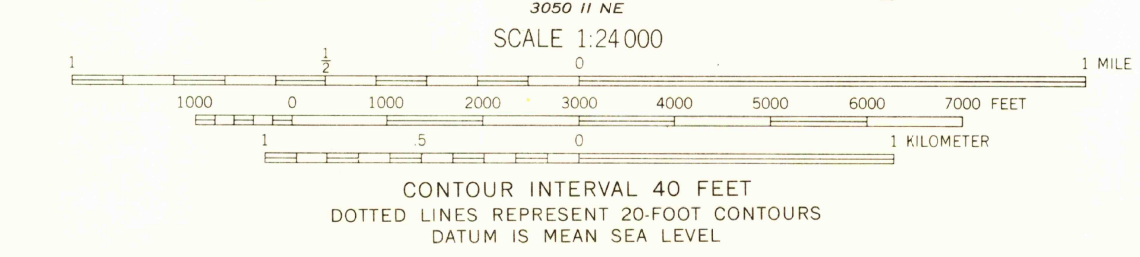
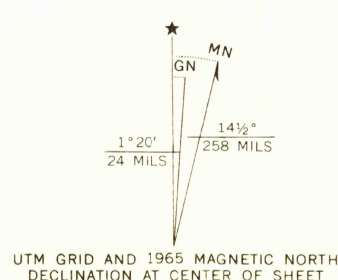
UNITED STATES
DEPARTMENT OF THE INTERIOR
GEOLOGICAL SURVEY

CIBOLA SE QUADRANGLE
ARIZONA—YUMA CO.
7.5 MINUTE SERIES (TOPOGRAPHIC)
SE/4 CIBOLA 15' QUADRANGLE

33° 22' 30" N
114° 37' 30" W
CIBOLA 7.5 MIN. QUADRANGLE



Mapped, edited, and published by the Geological Survey
Control by USGS and USC&GS
Topography by photogrammetric methods from aerial
photographs taken 1962. Field checked 1965
Polyconic projection. 1927 North American datum
10,000-foot grid based on Arizona coordinate system, west zone
1000-meter Universal Transverse Mercator grid ticks,
zone 11, shown in blue
Land lines have not been established in this area



THIS MAP COMPLIES WITH NATIONAL MAP ACCURACY STANDARDS
FOR SALE BY U.S. GEOLOGICAL SURVEY, DENVER, COLORADO 80225, OR WASHINGTON, D.C. 20242
A FOLDER DESCRIBING TOPOGRAPHIC MAPS AND SYMBOLS IS AVAILABLE ON REQUEST

USGS
Historical File
Topographic Division



ROAD CLASSIFICATION
Light duty ————— Unimproved dirt - - - - -

U.S.G.S.
FILE COPY
TOPOGRAPHIC DIVISION

CIBOLA SE, ARIZ.
SE/4 CIBOLA 15' QUADRANGLE
N3315—W11430/7.5

1965
AMS 3050 I SE—SERIES W898

2235
JUN 1 1965
JUNE 1, 1966