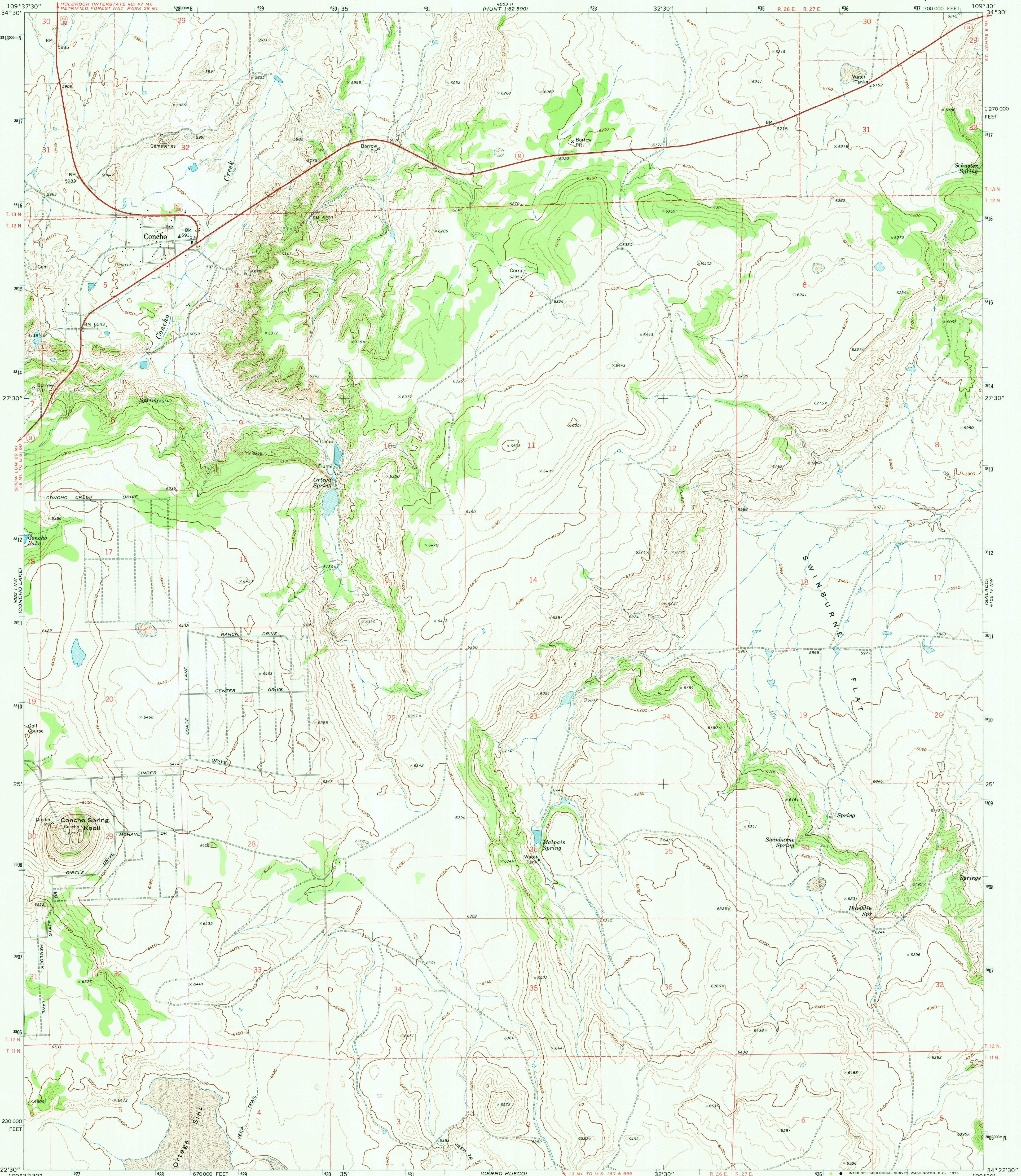
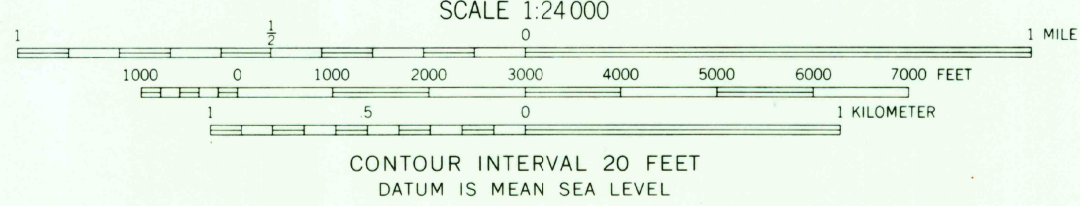
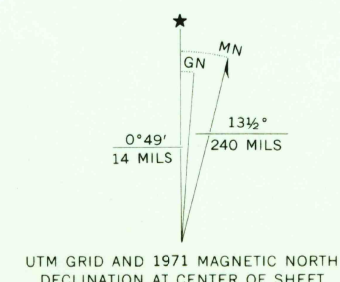


UNITED STATES
DEPARTMENT OF THE INTERIOR
GEOLOGICAL SURVEY

CONCHO QUADRANGLE
ARIZONA - APACHE CO.
7.5 MINUTE SERIES (TOPOGRAPHIC)



Mapped, edited, and published by the Geological Survey
Control by USGS and USC&GS
Topography by photogrammetric methods from aerial photographs taken 1969. Field checked 1971
Projection and 10,000-foot grid ticks: Arizona coordinate system, east zone (transverse Mercator)
1,000-meter Universal Transverse Mercator grid ticks, zone 12, shown in blue. 1927 North American datum
Fine red dashed lines indicate selected fence lines
Certain land lines are omitted because of insufficient data



ROAD CLASSIFICATION

Primary highway, hard surface	Light-duty road, hard or improved surface
Secondary highway, hard surface	Unimproved road
Interstate Route	U. S. Route
	State Route

THIS MAP COMPLIES WITH NATIONAL MAP ACCURACY STANDARDS
FOR SALE BY U. S. GEOLOGICAL SURVEY, DENVER, COLORADO 80225, OR WASHINGTON, D. C. 20242
A FOLDER DESCRIBING TOPOGRAPHIC MAPS AND SYMBOLS IS AVAILABLE ON REQUEST

USGS
Historical File
Topographic Division

CONCHO, ARIZ.
N3422.5-W10930.7.5
1971

AMS 4052 I NE-SERIES V898

OCT 31 1970
3600
50PLAIN