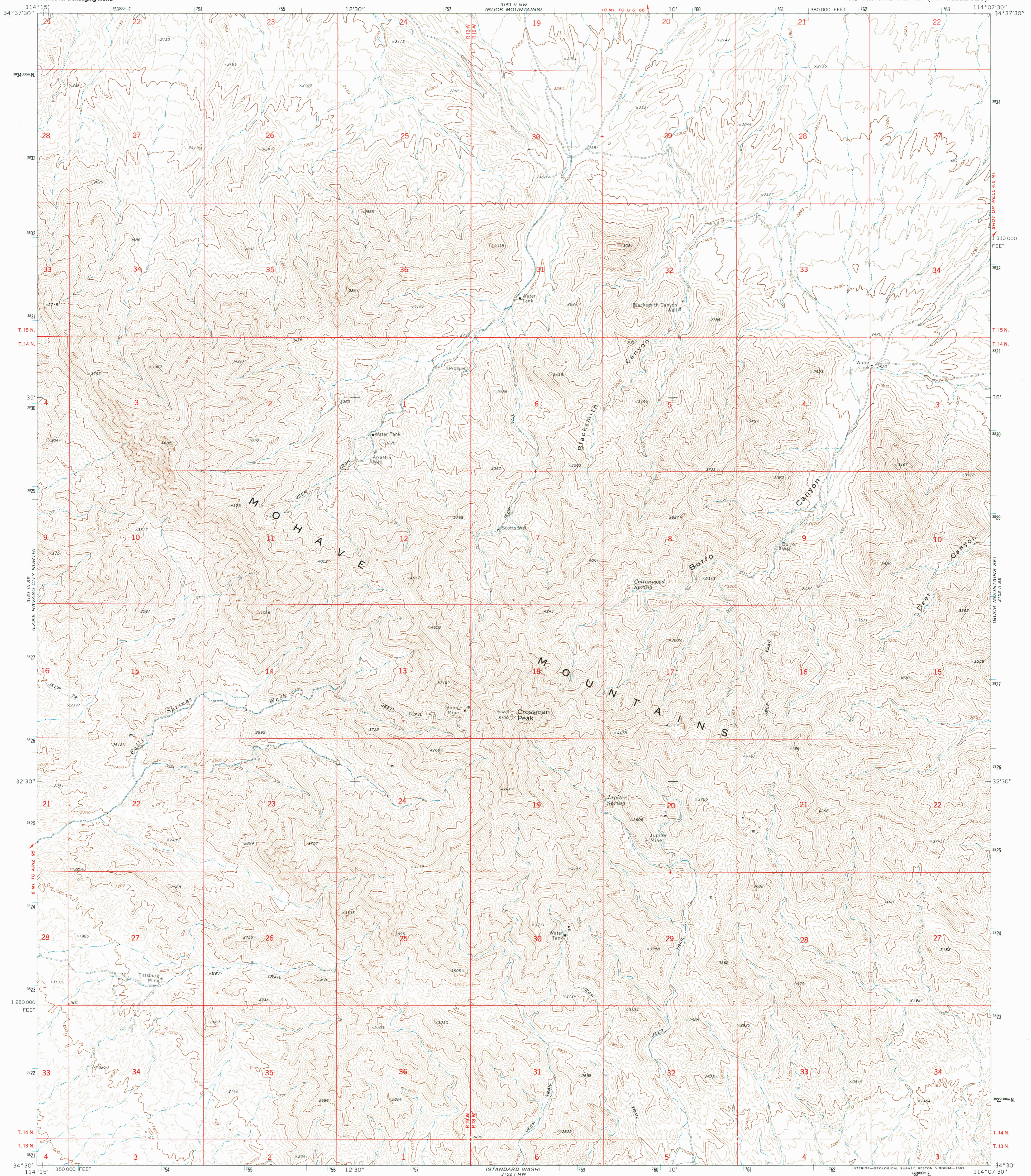




U.S. DEPARTMENT OF THE INTERIOR
U.S. GEOLOGICAL SURVEY

CROSSMAN PEAK QUADRANGLE
ARIZONA—MOHAVE CO.
7.5 MINUTE SERIES (TOPOGRAPHIC)



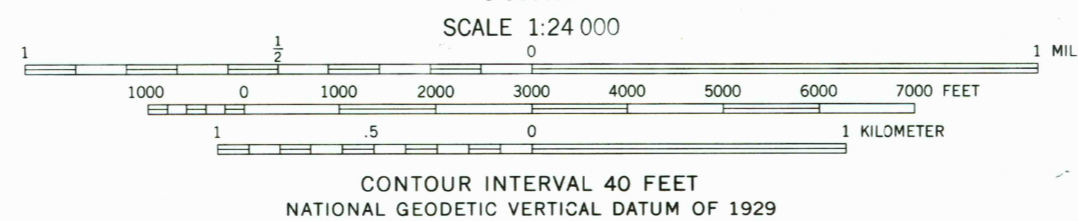
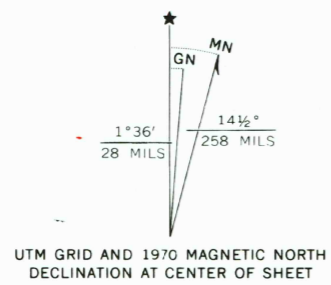
Mapped, edited, and published by the Geological Survey

Control by USGS and USC&GS

Topography by photogrammetric methods from aerial photographs taken 1969. Field checked 1970

Polycyclic projection. 1927 North American datum 10,000-foot grid based on Arizona coordinate system, west zone 1000-meter Universal Transverse Mercator grid ticks, zone 11, shown in blue

To place on the predicted North American Datum 1983, move the projection lines 1 meter north and 72 meters east as shown by dashed corner ticks



SCALE 1:24 000
CONTOUR INTERVAL 40 FEET
NATIONAL GEODETIC VERTICAL DATUM OF 1929



QUADRANGLE LOCATION

ROAD CLASSIFICATION	
Primary highway, hard surface	Light-duty road, hard or improved surface
Secondary highway, hard surface	Unimproved road
Interstate Route	U.S. Route
	State Route

RECEIVED
OCT 31 1999

USGS NMD
HISTORICAL MAP ARCHIVES

CROSSMAN PEAK, ARIZ.
N3430—W11407.5/7.5

1970

DMA 3153 II SW—SERIES—V898

THIS MAP COMPLIES WITH NATIONAL MAP ACCURACY STANDARDS
FOR SALE BY U.S. GEOLOGICAL SURVEY, P.O. BOX 25286, DENVER, COLORADO 80225
A FOLDER DESCRIBING TOPOGRAPHIC MAPS AND SYMBOLS IS AVAILABLE ON REQUEST

