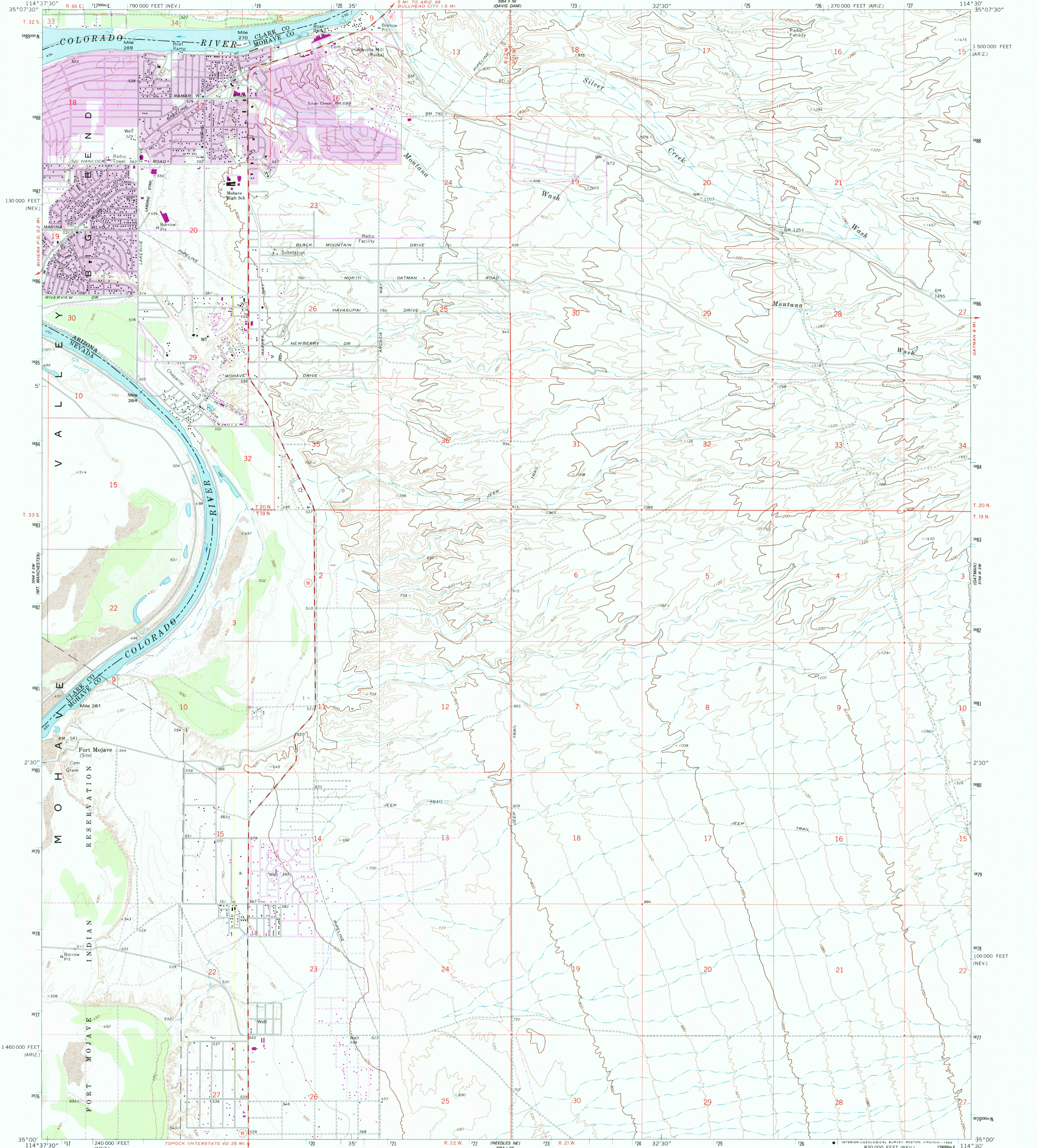
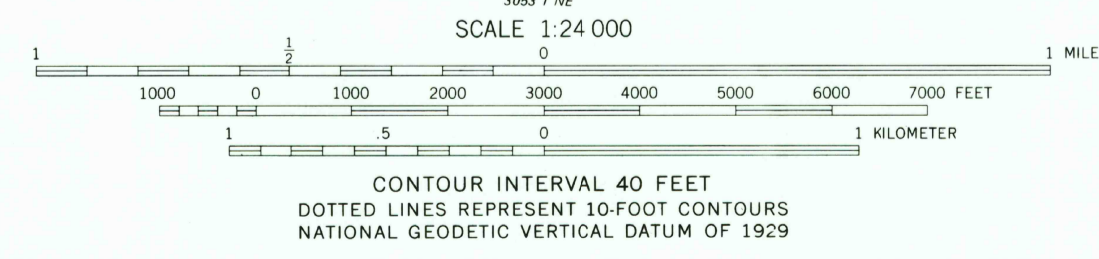
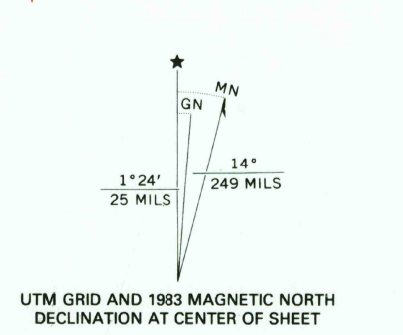


UNITED STATES
DEPARTMENT OF THE INTERIOR
GEOLOGICAL SURVEY

DAVIS DAM SE QUADRANGLE
ARIZONA-NEVADA
7.5 MINUTE SERIES (TOPOGRAPHIC)
SE/4 DAVIS DAM 15' QUADRANGLE



Mapped, edited, and published by the Geological Survey
Control by USGS and NOS/NOAA
Topography by photogrammetric methods from aerial photographs taken 1969. Field checked 1970.
Polyconic projection, 1927 North American datum
10,000-foot grids based on Arizona coordinate system, west zone and Nevada coordinate system, east zone
1000-meter Universal Transverse Mercator grid ticks, zone 11, shown in blue
To place on the predicted North American Datum 1983 move the projection lines 2 meters north and 73 meters east as shown by dashed corner ticks
Where omitted, land lines have not been established
There may be private inholdings within the boundaries of the National or State reservations shown on this map



ROAD CLASSIFICATION

Primary highway, hard surface	Light-duty road, hard or improved surface
Secondary highway, hard surface	Unimproved road
Interstate Route	U. S. Route
	State Route

THIS MAP COMPLIES WITH NATIONAL MAP ACCURACY STANDARDS
FOR SALE BY U. S. GEOLOGICAL SURVEY, DENVER, COLORADO 80225, OR RESTON, VIRGINIA 22092
A FOLDER DESCRIBING TOPOGRAPHIC MAPS AND SYMBOLS IS AVAILABLE ON REQUEST

Revisions shown in purple compiled from aerial photographs taken 1980 and other source data. This information not field checked. Map edited 1983
Purple tint indicates extension of urban areas

DAVIS DAM SE, ARIZ.-NEV.
SE/4 DAVIS DAM 15' QUADRANGLE
N3500-W11430/7.5
1970
PHOTOREVISED 1983
DMA 3054 II SE-SERIES V988