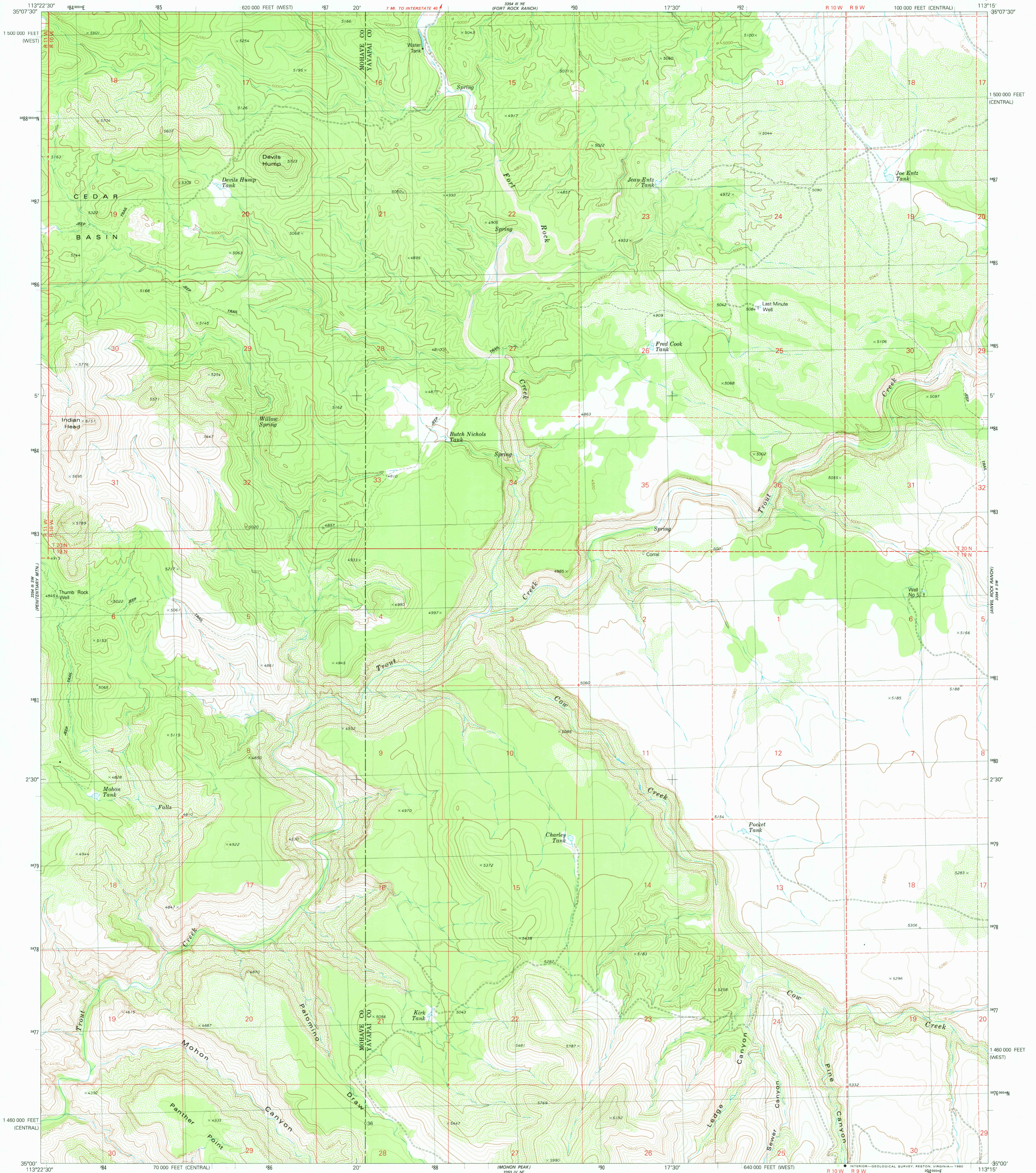


UNITED STATES  
DEPARTMENT OF THE INTERIOR  
GEOLOGICAL SURVEY

DEVILS HUMP QUADRANGLE  
ARIZONA  
7.5 MINUTE SERIES (TOPOGRAPHIC)



Mapped, edited, and published by the Geological Survey

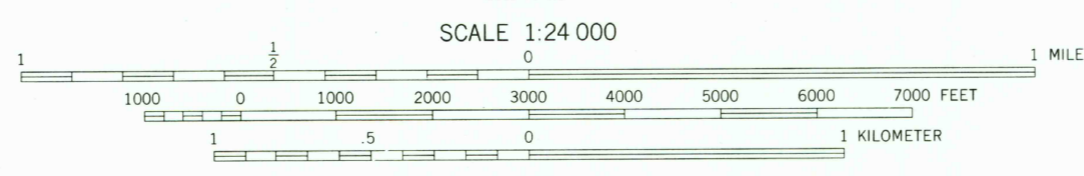
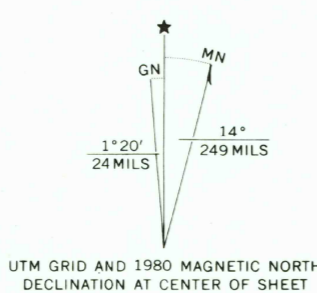
Control by USGS and NOS/NOAA

Topography by photogrammetric methods from aerial photographs taken 1973. Field checked 1975. Map edited 1980.

Projection: Arizona coordinate system, central zone (transverse Mercator)  
10,000-foot grid ticks based on Arizona coordinate system, central and west zones

1000-meter Universal Transverse Mercator grid, zone 12  
1927 North American Datum  
To place on the predicted North American Datum 1983  
move the projection lines 2 meters north and  
69 meters east as shown by dashed corner ticks

Fine red dashed lines indicate selected fence and field lines where generally visible on aerial photographs. This information is unchecked



CONTOUR INTERVAL 40 FEET  
SUPPLEMENTARY CONTOUR INTERVAL 20 FEET  
NATIONAL GEODETIC VERTICAL DATUM OF 1929

THIS MAP COMPLIES WITH NATIONAL MAP ACCURACY STANDARDS  
FOR SALE BY U. S. GEOLOGICAL SURVEY, DENVER, COLORADO 80225, OR RESTON, VIRGINIA 22092  
A FOLDER DESCRIBING TOPOGRAPHIC MAPS AND SYMBOLS IS AVAILABLE ON REQUEST



ROAD CLASSIFICATION	
Primary highway, hard surface	Light-duty road, hard or improved surface
Secondary highway, hard surface	Unimproved road
Interstate Route	U. S. Route
	State Route

USGS  
Historical File  
Topographic Division

DEVILS HUMP, ARIZ.  
N3500-W11315/7.5

1980

DMA 3354 III SE-SERIES 9698

SEP 24 1980

2050