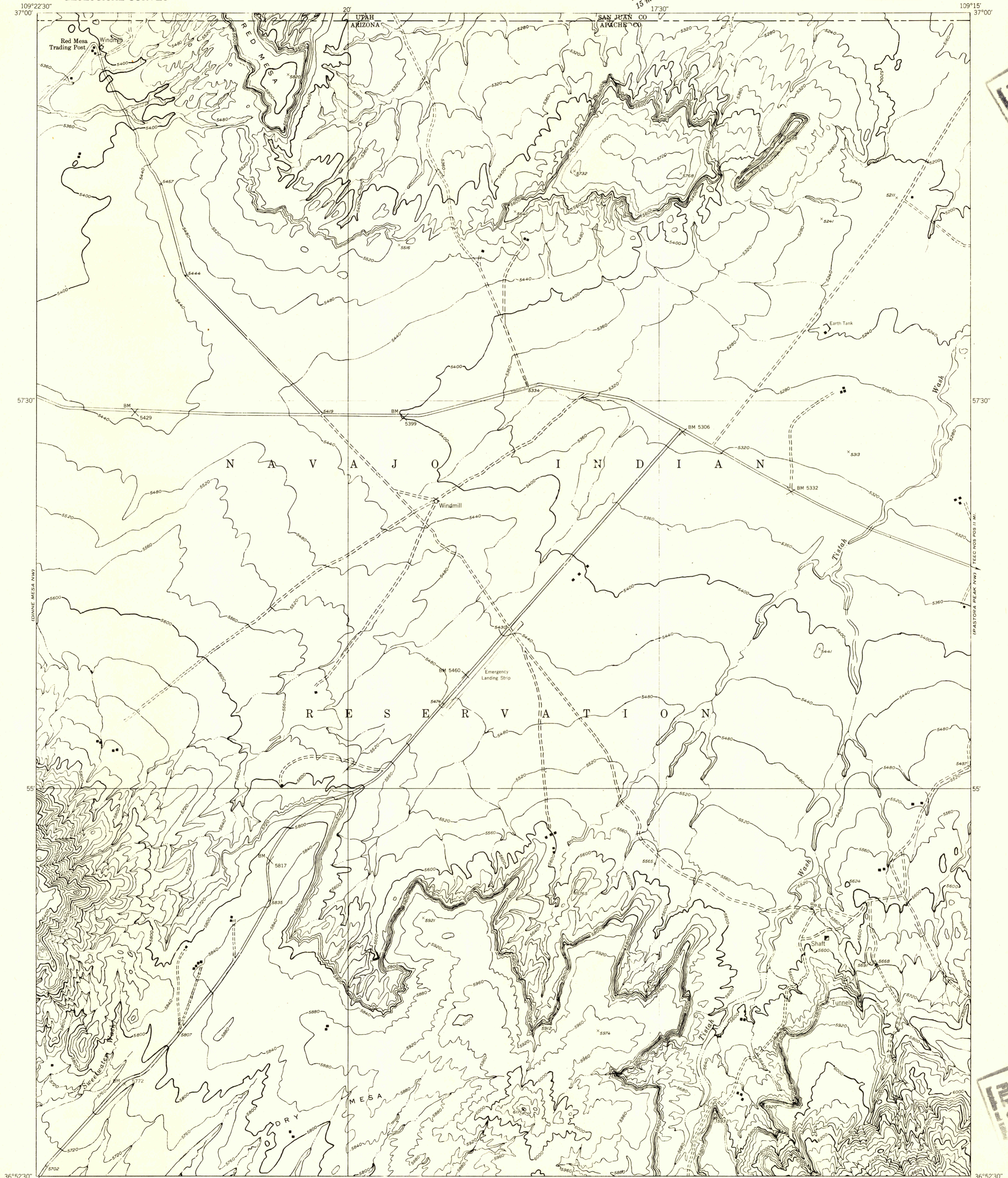


Preliminary edition of 1:62,500 scale  
Pending completion of 15 minute maps covering this area

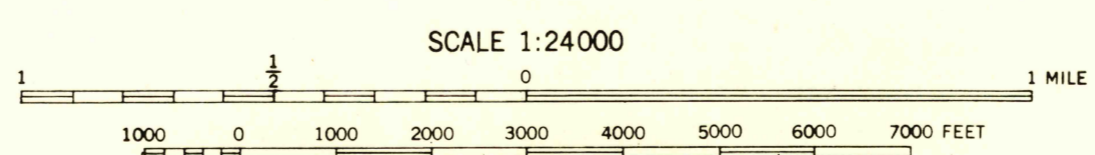


FILE COPY

FILE COPY

Mapped by the Geological Survey 1953  
Topography by multiplex methods from  
aerial photographs taken 1950

TRUE NORTH  
MAGNETIC NORTH  
APPROXIMATE MEAN  
DECLINATION, 1953



CONTOUR INTERVAL 40 FEET  
DATUM IS MEAN SEA LEVEL

USGS  
Historical File  
Topographic Division

ROAD CLASSIFICATION  
Improved Unimproved

DINNE MESA NE, ARIZ.-UTAH  
N3652.5-W10915.7.5

JUN 24 1954