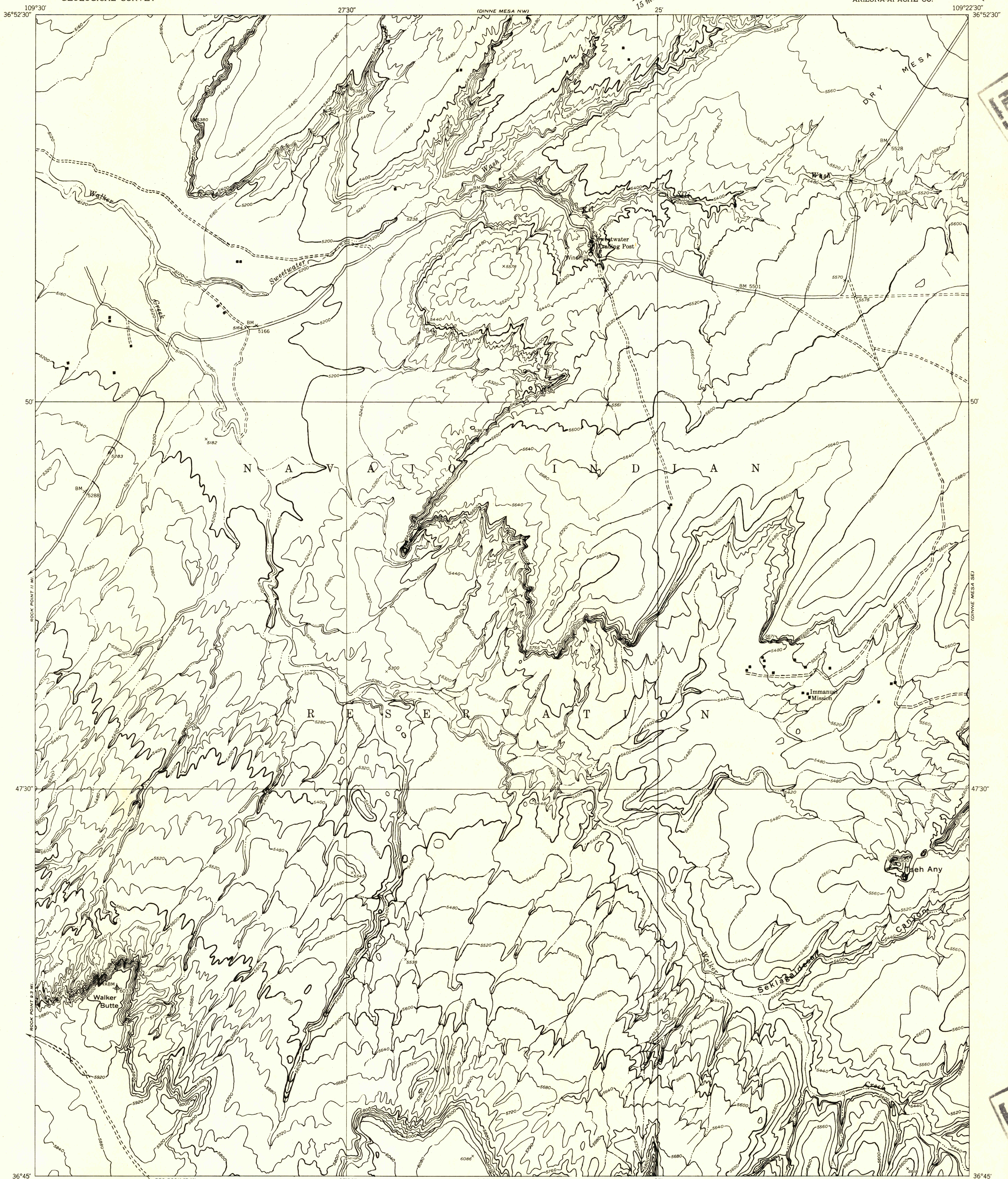


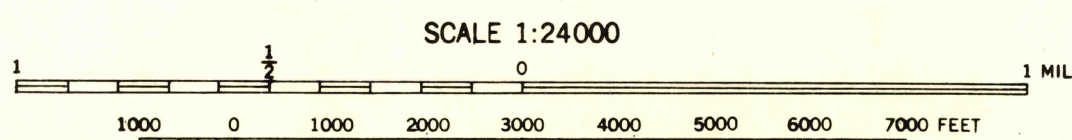
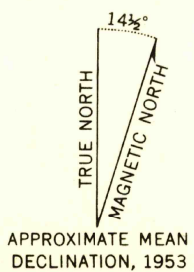
Preliminary edition
Pending completion of 1:62,500 scale
15 minute maps covering this area



FILE COPY
Geological Survey
Washington, D.C.

FILE COPY
Geological Survey
Washington, D.C.

Mapped by the Geological Survey 1953
Topography by multiplex methods from
aerial photographs taken 1950



CONTOUR INTERVAL 40 FEET
DATUM IS MEAN SEA LEVEL

USGS
Historical File
Topographic Division

ROAD CLASSIFICATION
Improved ——— Unimproved - - - - -

DINNE MESA SW, ARIZ.
N3645-W10922.5/7.5

JUN 24 1954

2050