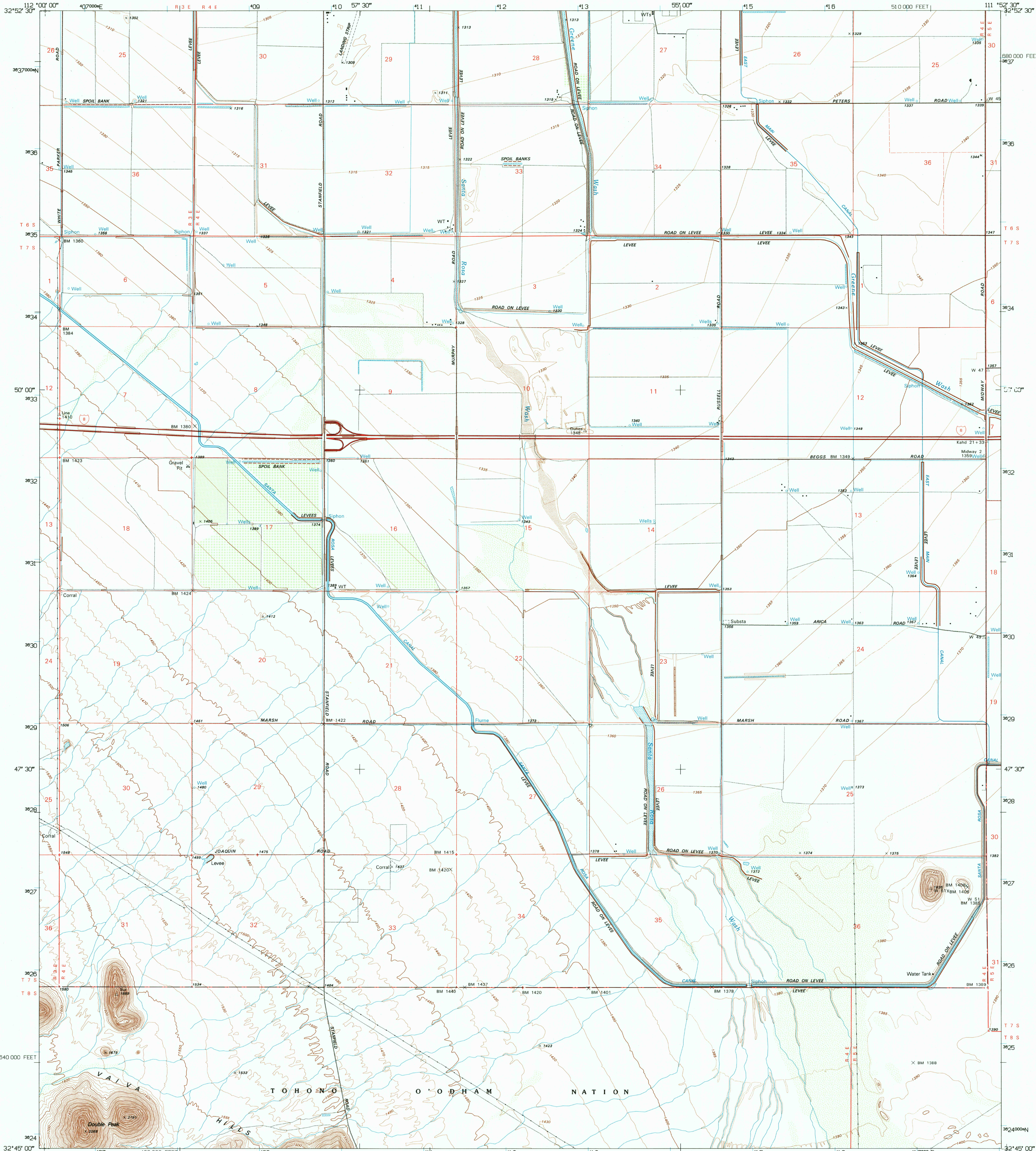
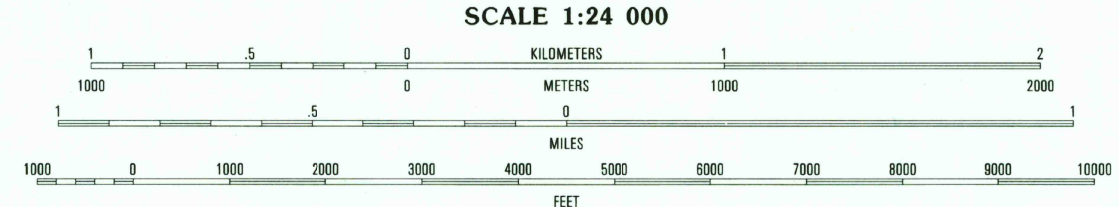
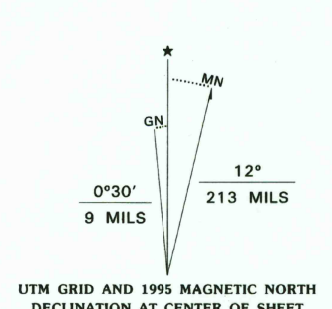


UNITED STATES
DEPARTMENT OF THE INTERIOR
GEOLOGICAL SURVEY

DOUBLE PEAK QUADRANGLE
ARIZONA-PINAL CO.
7.5-MINUTE SERIES (TOPOGRAPHIC)



Produced by the United States Geological Survey
Control by USGS and NOS/NOAA
Compiled from imagery dated 1982. Revised from imagery dated 1990. PLSS and survey control current as of 1992. Field checked 1992. Map edited 1995. Contours and land elevations have not been revised and may conflict with other content.
North American Datum of 1927 (NAD 27). Projection and blue 1000-meter ticks: Universal Transverse Mercator, zone 12 10 000-foot ticks: Arizona Coordinate System, central zone North American Datum of 1983 (NAD 83) is shown by dashed corner ticks. The values of the shift between NAD 27 and NAD 83 for 7.5-minute intersections are obtainable from National Geodetic Survey NADCON software.
There may be private inholdings within the boundaries of the National or State reservations shown on this map.
Fine red dashed lines indicate selected fence and field lines where generally visible on aerial photographs. This information is unchecked.
This map covers an active subsidence area.



CONTOUR INTERVAL 10 FEET
SUPPLEMENTARY CONTOUR INTERVAL 5 FEET
NATIONAL GEODETIC VERTICAL DATUM OF 1929
TO CONVERT FEET TO METERS MULTIPLY BY 0.3048
TO CONVERT METERS TO FEET MULTIPLY BY 3.2808
THIS MAP COMPLIES WITH NATIONAL MAP ACCURACY STANDARDS
FOR SALE BY U.S. GEOLOGICAL SURVEY
DENVER, COLORADO 80225, OR RESTON, VIRGINIA 22092
A FOLDER DESCRIBING TOPOGRAPHIC MAPS AND SYMBOLS IS AVAILABLE ON REQUEST

QUADRANGLE LOCATION

ARIZONA

ROAD CLASSIFICATION

Primary highway
hard surface
Secondary highway
hard surface
Interstate Route
U.S. Route
State Route

Light-duty road, hard or
improved surface
Unimproved road

USGS 1800 HISTORICAL
MAP ARCHIVES
MAY 18 1995
REC'D FILE COPY

DOUBLE PEAK, AZ
32111-G8-TF-024
1992
DMA 3649 IV SW-SERIES V898

