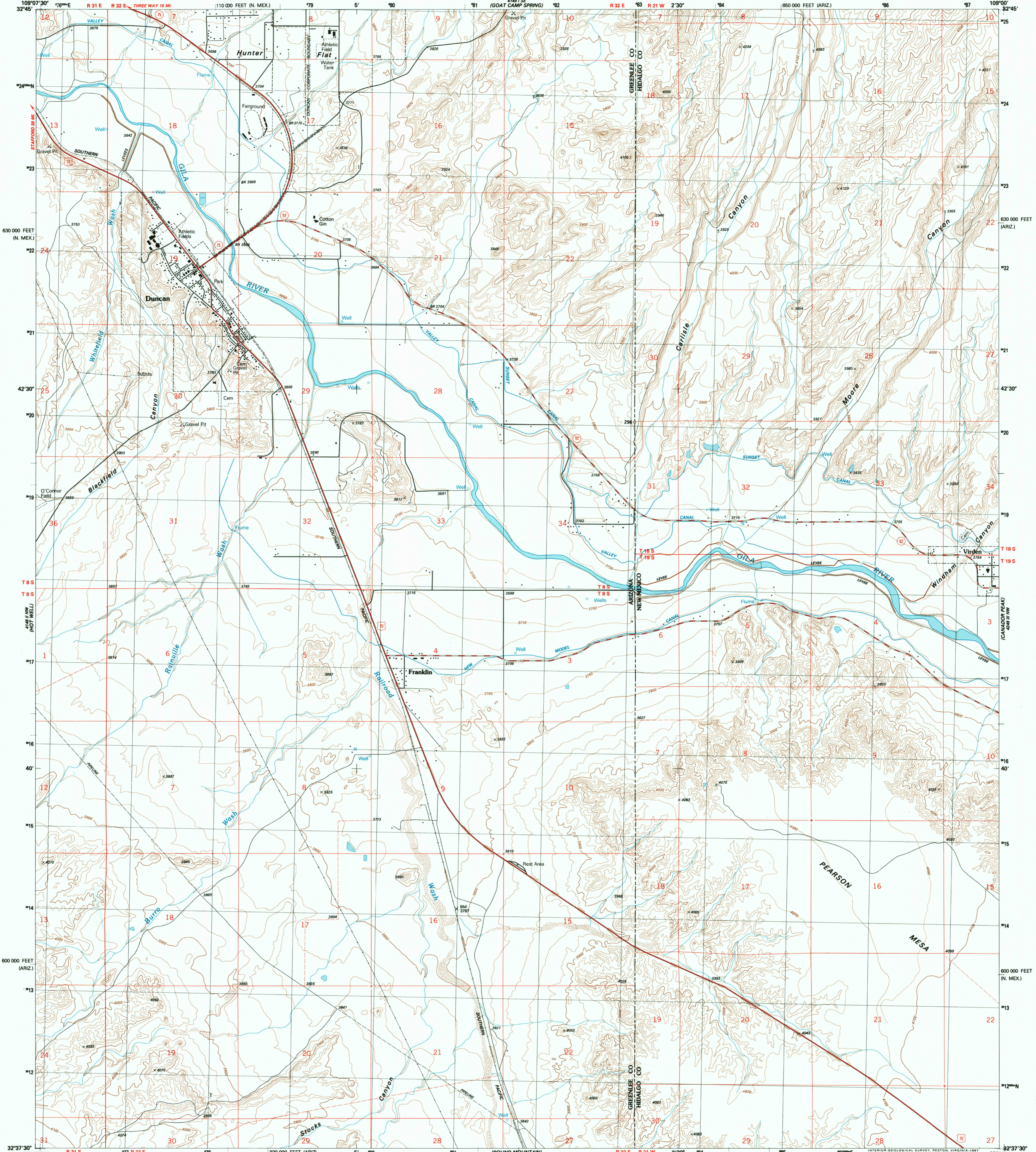


4149 I SE
4149 I SE
4149 I SE

UNITED STATES
DEPARTMENT OF THE INTERIOR
GEOLOGICAL SURVEY

DUNCAN QUADRANGLE
ARIZONA-NEW MEXICO
7.5 MINUTE SERIES (TOPOGRAPHIC)
NE4 DUNCAN 15' QUADRANGLE

4149 I SE
4149 I SE
4149 I SE



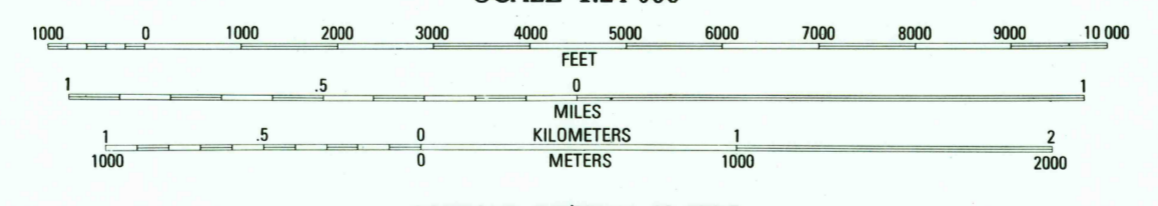
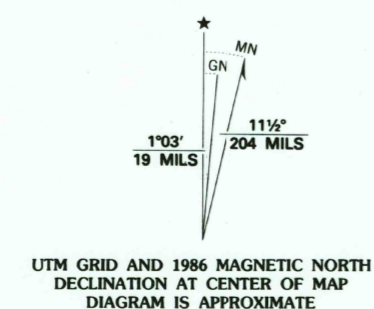
Produced by the United States Geological Survey

Control by USGS and NOS/NOAA
Compiled by photogrammetric methods from aerial photographs
taken 1981. Field checked 1983. Map edited 1986

Projection: Arizona coordinate system, east zone
(transverse Mercator)
10,000-foot grid ticks: Arizona coordinate system, east zone
and New Mexico coordinate system, west zone
1000-meter Universal Transverse Mercator grid, zone 12
1927 North American Datum

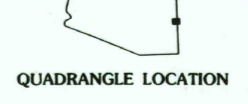
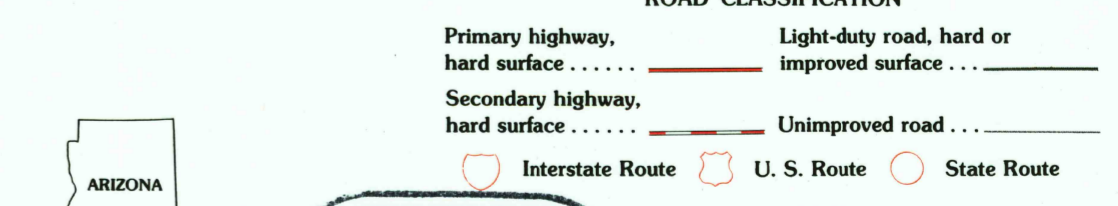
To place on the predicted North American Datum 1983
move the projection lines 6 meters south and
58 meters east as shown by dashed corner ticks

Fine red dashed lines indicate selected fence and field lines
generally visible on aerial photographs. This information is unchecked



CONTOUR INTERVAL 20 FEET
SUPPLEMENTARY CONTOUR INTERVAL 10 FEET
NATIONAL GEODETIC VERTICAL DATUM OF 1929

THIS MAP COMPLIES WITH NATIONAL MAP ACCURACY STANDARDS
FOR SALE BY U. S. GEOLOGICAL SURVEY, DENVER, COLORADO 80225, OR RESTON, VIRGINIA 22092
A FOLDER DESCRIBING TOPOGRAPHIC MAPS AND SYMBOLS IS AVAILABLE ON REQUEST



USGS HISTORICAL
MAP ARCHIVES
SEP 2 2 1995
REC'D FILE COPY

DUNCAN, ARIZ.-N. MEX.
NE4 DUNCAN 15' QUADRANGLE
32109-F1-TF-024
1986
DMA 4149 II NE-SERIES V898

ISBN 0-607-07762-X
9 780607 077629