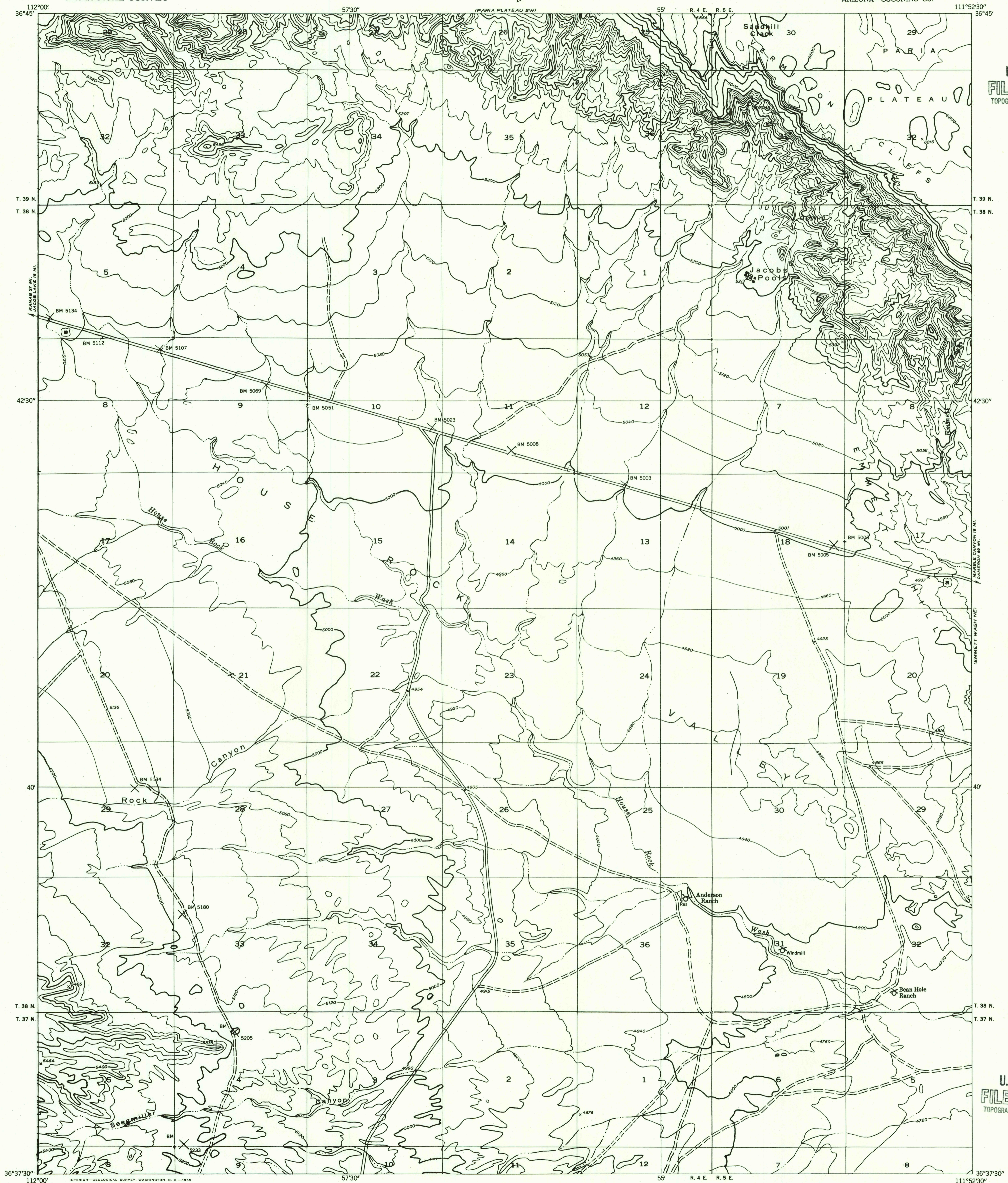
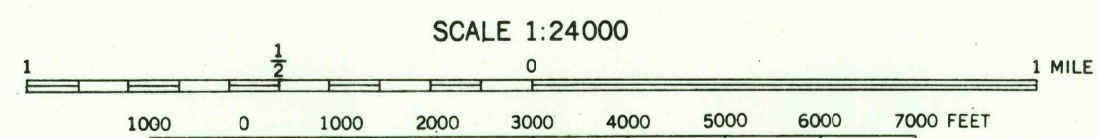
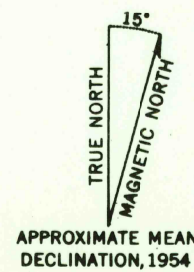


Preliminary edition
Pending completion of 1:62,500 scale
15 minute maps covering this area

U.S.G.S.
FILE COPY
TOPOGRAPHIC DIVISION



Mapped by the Geological Survey 1954
Topography by multiplex methods from
aerial photographs taken 1951



SCALE 1:24000
CONTOUR INTERVAL 40 FEET
DATUM IS MEAN SEA LEVEL

USGS
Historical File
Topographic Division

ROAD CLASSIFICATION
Improved ——— Unimproved - - - - -

U.S.G.S.
FILE COPY
TOPOGRAPHIC DIVISION

EMMETT WASH NW, ARIZ.
N3637.5—W11152.5/7.5

JUL 14 1955