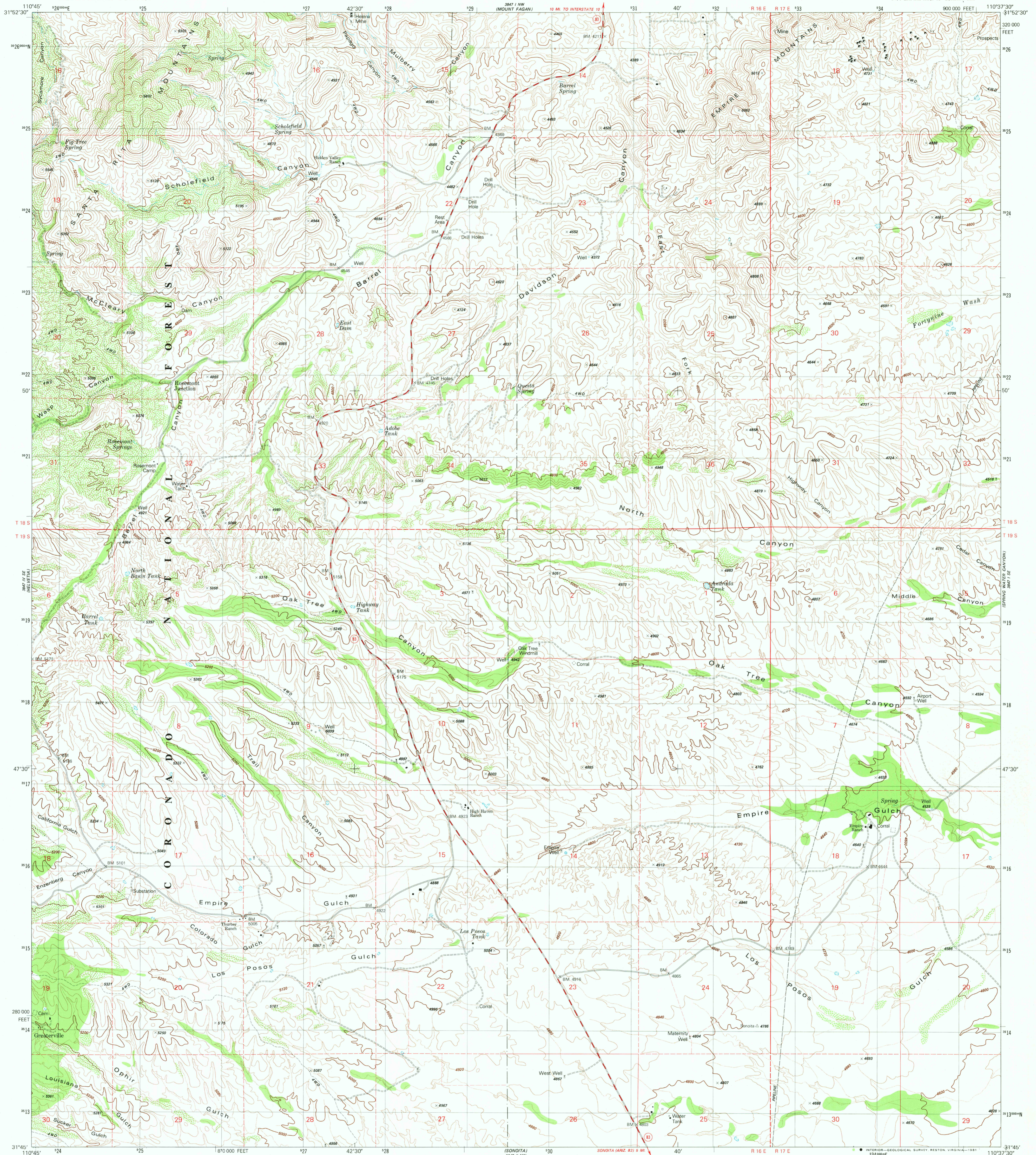
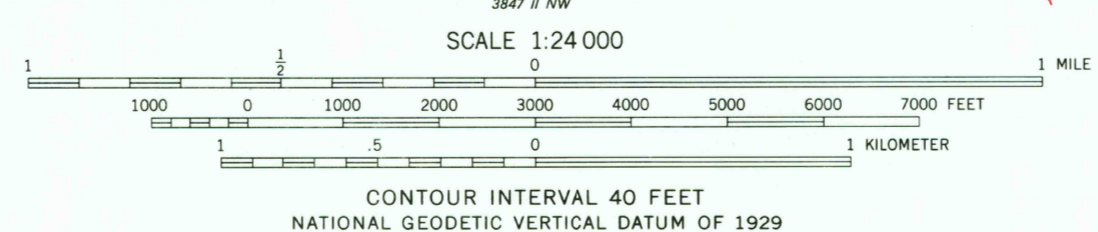
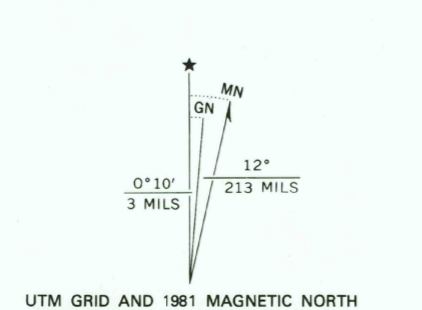


UNITED STATES
DEPARTMENT OF THE INTERIOR
GEOLOGICAL SURVEY

EMPIRE RANCH QUADRANGLE
ARIZONA-PIMA CO.
7.5 MINUTE SERIES (TOPOGRAPHIC)
SW4 EMPIRE MTS. 15' QUADRANGLE



Mapped, edited, and published by the Geological Survey
Control by USGS and NOS/NOAA
Topography by photogrammetric methods from aerial photographs
taken 1975. Field checked 1976. Map edited 1981
Projection and 10,000-foot grid ticks: Arizona coordinate
system, central zone (transverse Mercator)
1000-meter Universal Transverse Mercator grid, zone 12
1927 North American Datum
To place on the predicted North American Datum 1983
move the projection lines 8 meters south and
62 meters east as shown by dashed corner ticks
Fine red dashed lines indicate selected fence and field lines where
generally visible on aerial photographs. This information is unchecked
There may be private inholdings within the boundaries of the
National or State reservations shown on this map



ROAD CLASSIFICATION

Primary highway, hard surface	Light duty road, hard or improved surface
Secondary highway, hard surface	Unimproved road
Interstate Route	U. S. Route
	State Route

THIS MAP COMPLIES WITH NATIONAL MAP ACCURACY STANDARDS
FOR SALE BY U. S. GEOLOGICAL SURVEY, DENVER, COLORADO 80225, OR RESTON, VIRGINIA 22092
A FOLDER DESCRIBING TOPOGRAPHIC MAPS AND SYMBOLS IS AVAILABLE ON REQUEST

USGS
HISTORICAL FILE
NATIONAL MAPPING DIVISION

EMPIRE RANCH, ARIZ.
SW4 EMPIRE MTS. 15' QUADRANGLE
N3145-W11037.5/7.5
1981
DMA 3847.1 SW-SERIES V898

JUL 20 1981
1900