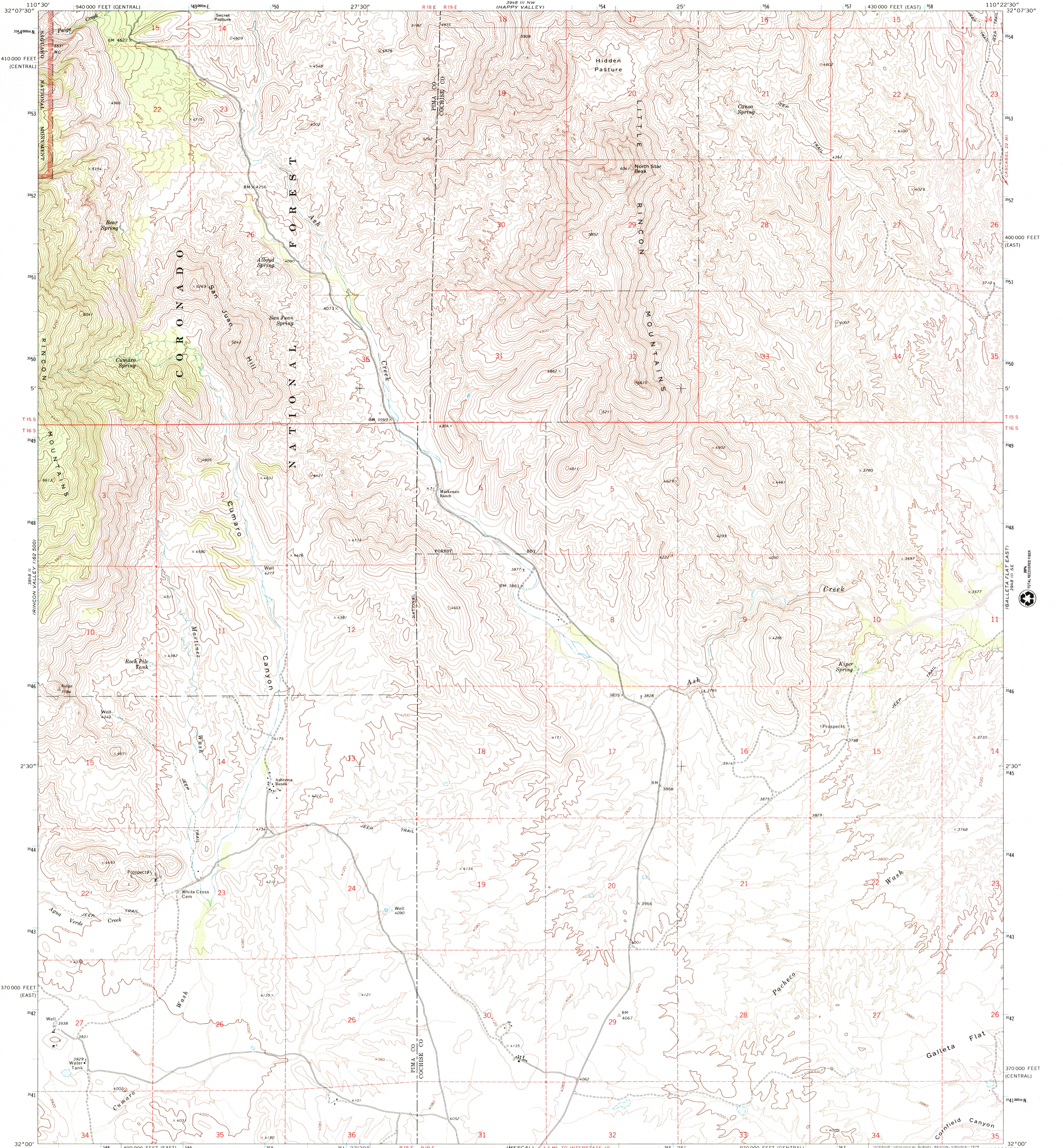


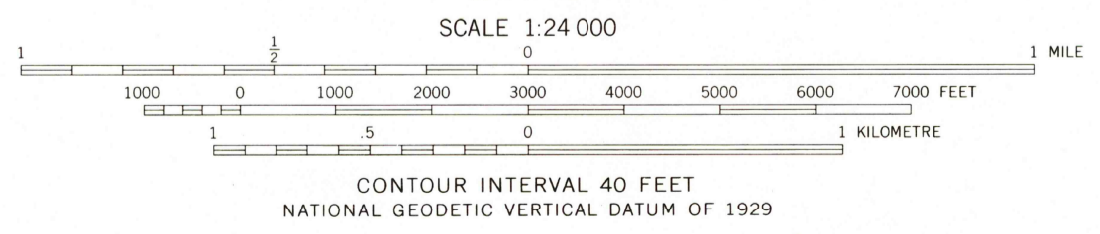
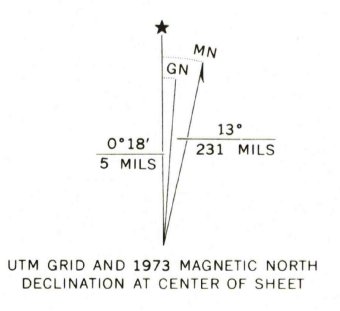


U.S. DEPARTMENT OF THE INTERIOR  
U.S. GEOLOGICAL SURVEY

GALLETTA FLAT WEST QUADRANGLE  
ARIZONA  
7.5 MINUTE SERIES (TOPOGRAPHIC)  
SW/4 HAPPY VALLEY 15' QUADRANGLE



Mapped, edited, and published by the Geological Survey  
Control by USGS and NOS/NOAA  
Topography by photogrammetric methods from aerial photographs taken 1972. Field checked 1973  
Projection: Arizona coordinate system, east zone (transverse Mercator)  
10,000-foot grid ticks based on Arizona coordinate system, east and central zones  
1000-metre Universal Transverse Mercator grid ticks, zone 12, shown in blue. 1927 North American datum  
Where omitted, land lines have not been established



ROAD CLASSIFICATION

Primary highway, hard surface	Light-duty road, hard or improved surface
Secondary highway, hard surface	Unimproved road
Interstate Route	U. S. Route
	State Route

RECEIVED OCT 31 2000  
GALLETTA FLAT WEST, ARIZ.  
SW/4 HAPPY VALLEY 15' QUADRANGLE  
N3200-W11022.5/7.5  
1973  
AMS 3948 III SW-SERIES V898

THIS MAP COMPLIES WITH NATIONAL MAP ACCURACY STANDARDS  
FOR SALE BY U.S. GEOLOGICAL SURVEY, P.O. BOX 25286, DENVER, COLORADO 80225  
A FOLDER DESCRIBING TOPOGRAPHIC MAPS AND SYMBOLS IS AVAILABLE ON REQUEST

