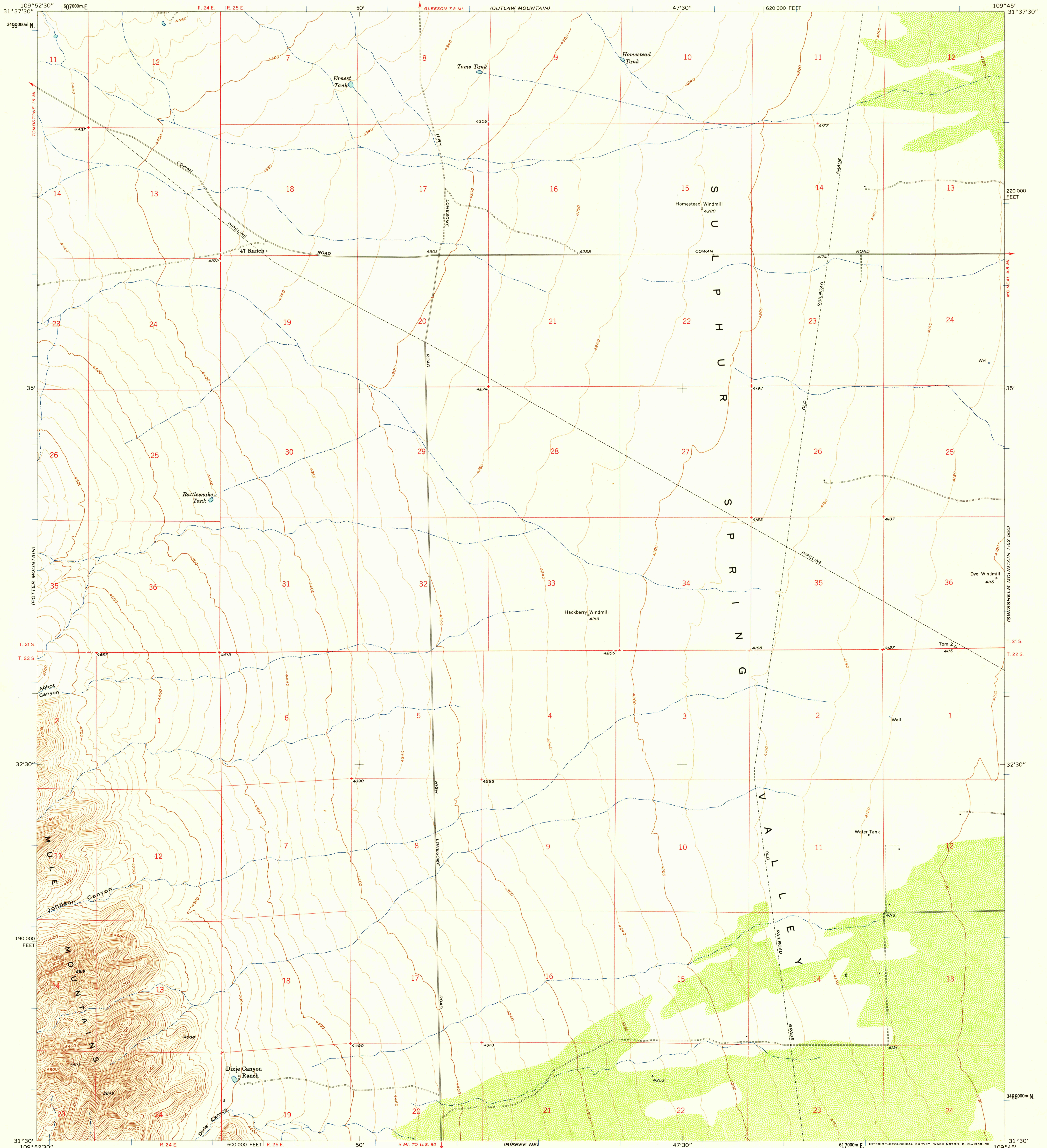


UNITED STATES
DEPARTMENT OF THE INTERIOR
GEOLOGICAL SURVEY

GLEESON SE QUADRANGLE
ARIZONA-COCHISE CO.
7.5 MINUTE SERIES (TOPOGRAPHIC)
SE/4 GLEESON 15' QUADRANGLE



Mapped, edited, and published by the Geological Survey
Control by USGS, USC&GS, and USCE
Topography from aerial photographs by ER-55 plotters
Aerial photographs taken 1956. Field check 1958
Polyconic projection. 1927 North American datum
10,000-foot grid based on Arizona coordinate system, east zone
1000-meter Universal Transverse Mercator grid ticks,
zone 12, shown in blue
Dashed land lines indicate approximate locations

TRUE NORTH
MAGNETIC NORTH
APPROXIMATE MEAN
DECLINATION, 1958

SCALE 1:24,000
1 1000 2000 3000 4000 5000 6000 7000 FEET
1 KILOMETER
CONTOUR INTERVAL 20 FEET
DATUM IS MEAN SEA LEVEL

THIS MAP COMPLIES WITH NATIONAL MAP ACCURACY STANDARDS
FOR SALE BY U. S. GEOLOGICAL SURVEY, DENVER 2, COLORADO OR WASHINGTON 25, D. C.
A FOLDER DESCRIBING TOPOGRAPHIC MAPS AND SYMBOLS IS AVAILABLE ON REQUEST

USGS
Historical File
Topographic Division



ROAD CLASSIFICATION
Light-duty ————— Unimproved dirt —————

U.S.G.S.
FILE COPY
TOPOGRAPHIC DIVISION

GLEESON SE, ARIZ.
SE/4 GLEESON 15' QUADRANGLE
N3130-W10945/7.5
1958

MAY 27 1958

MAY 2 1958