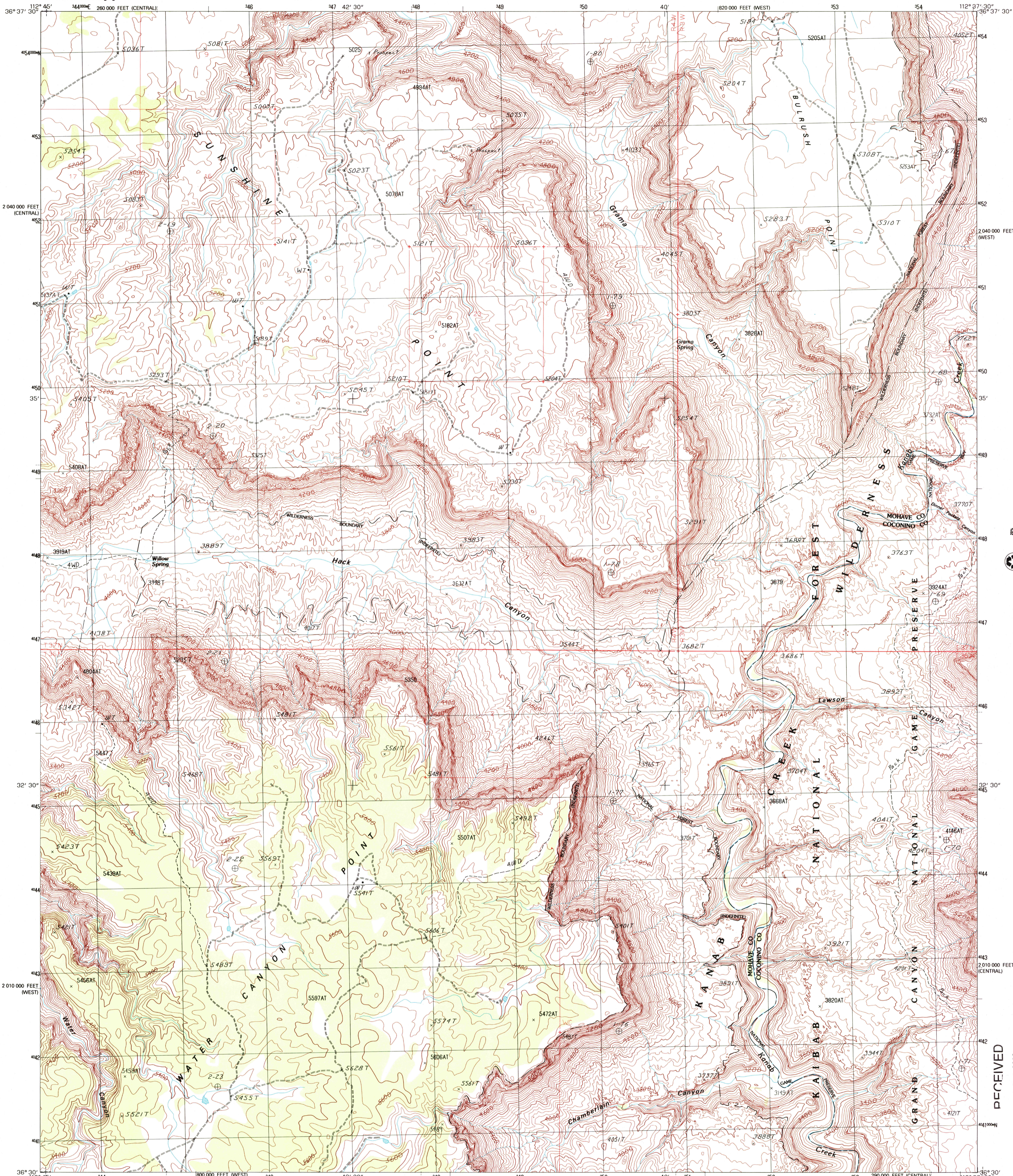




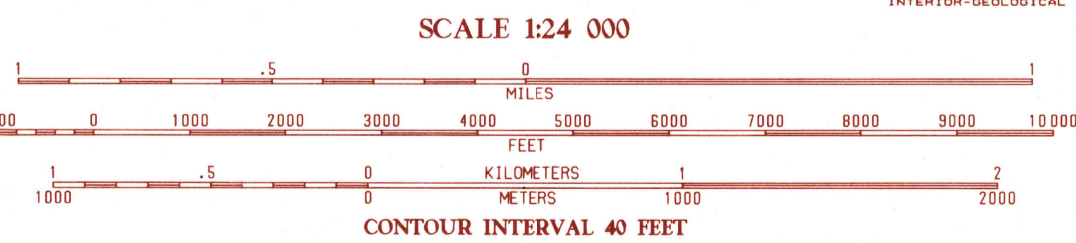
U.S. DEPARTMENT OF THE INTERIOR  
U.S. GEOLOGICAL SURVEY

GRAMA SPRING QUADRANGLE  
ARIZONA  
7.5 MINUTE SERIES (TOPOGRAPHIC)



PRODUCED BY THE UNITED STATES GEOLOGICAL SURVEY  
CONTROL BY ..... USGS, NOS/NOAA  
COMPILED FROM AERIAL PHOTOGRAPHS TAKEN ..... 1963  
FIELD CHECKED ..... 1985 MAP EDITED ..... 1988  
PROJECTION ..... TRANSVERSE MERCATOR  
GRID ..... METER UNIVERSAL TRANSVERSE MERCATOR ..... ZONE 12  
1000-FOOT STATE GRID TICKS ..... ARIZONA, WEST ZONE  
UTM GRID DECLINATION ..... ARIZONA-CENTRAL ZONE  
1988 MAGNETIC NORTH DECLINATION ..... 13° EAST  
VERTICAL DATUM ..... NATIONAL GEODETIC VERTICAL DATUM OF 1929  
HORIZONTAL DATUM ..... 1983 NORTH AMERICAN DATUM  
To place on the predicted North American Datum of 1983,  
move the projection lines as shown by dashed corner ticks  
(5 meters north and 68 meters east)  
There may be private inholdings within the boundaries of any  
Federal and State Reservations shown on this map  
Where omitted, land lines have not been established

**PROVISIONAL MAP**  
Produced from original  
manuscript drawings. Infor-  
mation shown as of date of  
photography.



To convert feet to meters multiply by .3048  
To convert meters to feet multiply by 3.2808  
THIS MAP COMPLIES WITH NATIONAL MAP ACCURACY STANDARDS  
FOR SALE BY U.S. GEOLOGICAL SURVEY, DENVER, COLORADO 80225

ARIZONA

QUADRANGLE LOCATION

1	2	3	1 Sunshin Ridge
2	3	4	2 Fishing Tank
3	4	5	3 Sunlight Point
4	5	6	4 Robinson Canyon
5	6	7	5 Jumpup Point
6	7	8	6 Wilson Tank
7	8		7 Kanab Point
8			8 Fishal Mesa

ADJOINING 7.5 QUADRANGLE NAMES

ROAD LEGEND

Improved Road .....  
Unimproved Road .....  
Trail .....  
Interstate Route ..... U.S. Route ..... State Route .....

GRAMA SPRING, ARIZONA  
PROVISIONAL EDITION 1988

36112-E6-TT-024



RECEIVED  
OCT 31 2002

USGS NWU  
HISTORICAL MAP ARCHIVES  
9780607-078022