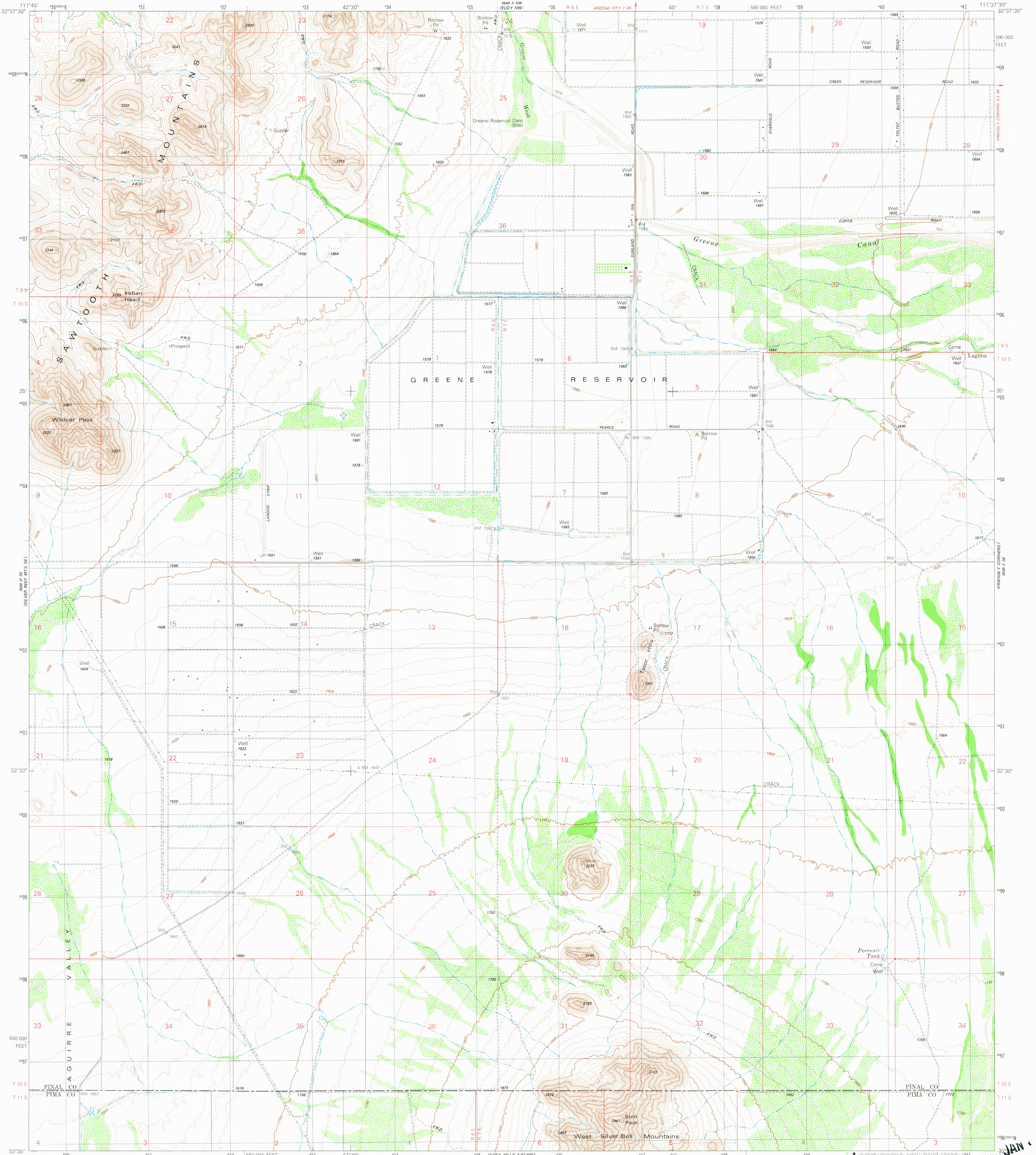


3648 II NW  
(ELOY REF. 47.5)

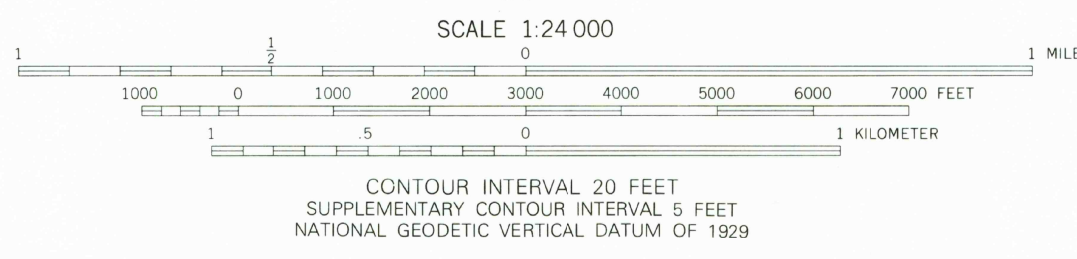
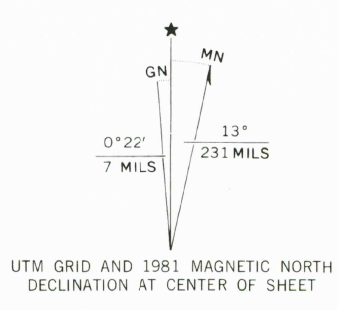
UNITED STATES  
DEPARTMENT OF THE INTERIOR  
GEOLOGICAL SURVEY

GREENE RESERVOIR QUADRANGLE  
ARIZONA  
7.5 MINUTE SERIES (TOPOGRAPHIC)

3648 II NE  
(ELOY SOUTH)



Mapped, edited, and published by the Geological Survey  
Control by USGS and NOS/NOAA  
Topography by photogrammetric methods from aerial photographs taken 1976. Field checked 1977. Map edited 1981  
Projection and 10,000-foot grid ticks: Arizona coordinate system, central zone (transverse Mercator)  
1000-meter Universal Transverse Mercator grid, zone 12  
1927 North American Datum  
To place on the predicted North American Datum 1983 move the projection lines 4 meters south and 64 meters east as shown by dashed corner ticks  
Fine red dashed lines indicate selected fence and field lines where generally only from aerial photographs. This information is unchecked  
A portion of the east half of this map lies within a subsidence area  
Vertical control based on latest available adjustment



ROAD CLASSIFICATION

Primary highway, hard surface	Light-duty road, hard or improved surface
Secondary highway, hard surface	Unimproved road
Interstate Route	U. S. Route
	State Route

GREENE RESERVOIR, ARIZ.  
SW/4 ELOY 15' QUADRANGLE  
N3230-W11137.5/7.5  
1981  
DMA 3648 II SW—SERIES V898

JAN. 1950