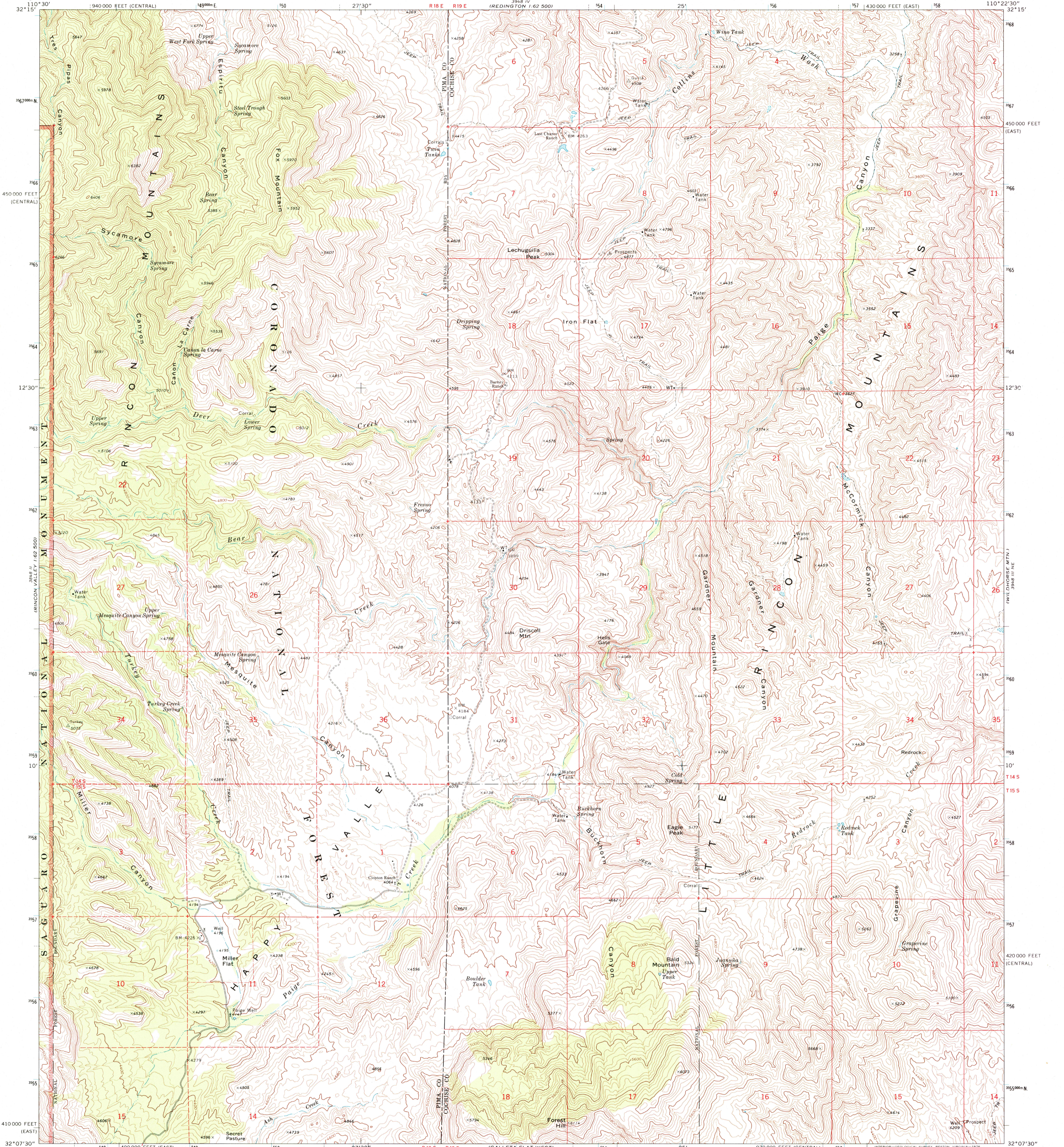


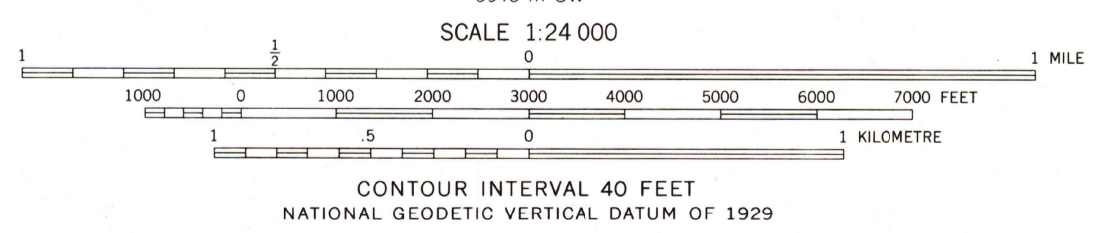
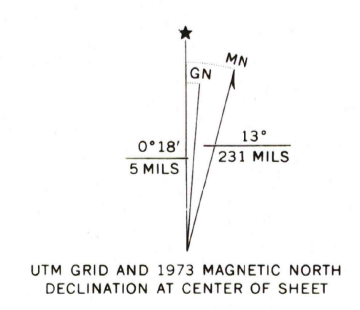


U.S. DEPARTMENT OF THE INTERIOR
U.S. GEOLOGICAL SURVEY

HAPPY VALLEY QUADRANGLE
ARIZONA
7.5 MINUTE SERIES (TOPOGRAPHIC)
NW 4 HAPPY VALLEY 15' QUADRANGLE



Maped, edited, and published by the Geological Survey
Control by USGS and NOS/NOAA
Topography by photogrammetric methods from aerial photographs taken 1972. Field checked 1973
Projection: Arizona coordinate system, east zone (transverse Mercator)
10,000-foot grid ticks based on Arizona coordinate system, east and central zones
1000-metre Universal Transverse Mercator grid ticks, zone 12, shown in blue. 1927 North American datum
Fine red dashed lines indicate selected fence lines
Where omitted, land lines have not been established



CONTOUR INTERVAL 40 FEET
NATIONAL GEODETIC DATUM OF 1929



ROAD CLASSIFICATION

Primary highway, hard surface	Light-duty road, hard or improved surface
Secondary highway, hard surface	Unimproved road
Interstate Route	U. S. Route
	State Route

HAPPY VALLEY, ARIZ.
NW 4 HAPPY VALLEY 15' QUADRANGLE
N3207.5-W11022.5/7.5

1973

AMS 3948 III NW-SERIES V898

THIS MAP COMPLIES WITH NATIONAL MAP ACCURACY STANDARDS
FOR SALE BY U.S. GEOLOGICAL SURVEY, P.O. BOX 25286, DENVER, COLORADO 80225
A FOLDER DESCRIBING TOPOGRAPHIC MAPS AND SYMBOLS IS AVAILABLE ON REQUEST

