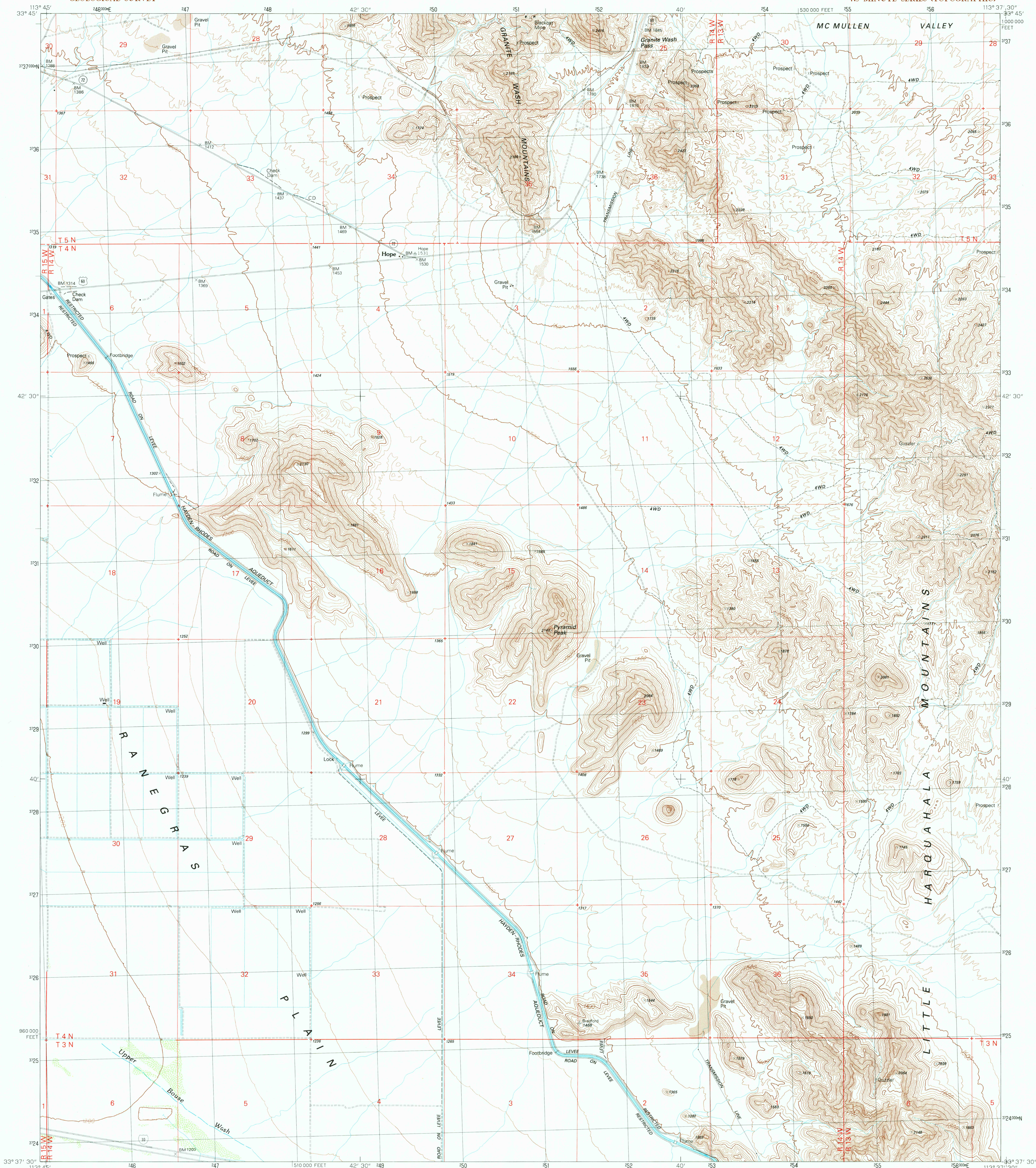


UNITED STATES
DEPARTMENT OF THE INTERIOR
GEOLOGICAL SURVEY

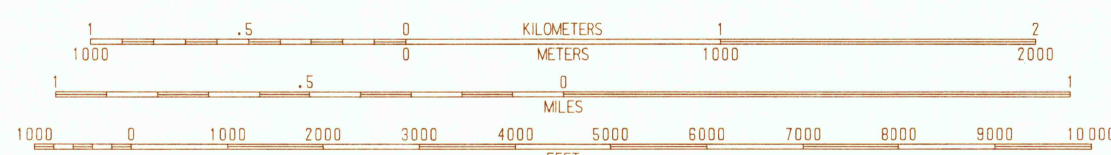
HOPE QUADRANGLE
ARIZONA-LA PAZ CO.
7.5 MINUTE SERIES (TOPOGRAPHIC)



PRODUCED BY THE UNITED STATES GEOLOGICAL SURVEY
CONTROL BY: USGS, NOS/NOAA
COMPILED FROM AERIAL PHOTOGRAPHS TAKEN: 1951 AND 1960
PLANETABLE SURVEYS: 1961
LIMITED REVISION FROM AERIAL PHOTOGRAPHS TAKEN: 1965
FIELD CHECKED: 1967
MAP EDITED: 1990
PROJECTION: TRANSVERSE MERCATOR
GRID: 1000-METER UNIVERSAL TRANSVERSE MERCATOR
ZONE: 12
1000-FOOT STATE GRID TICKS: ARIZONA, WEST ZONE
UTM GRID DECLINATION: 1°29' WEST
1990 MAGNETIC NORTH DECLINATION: 12°30' EAST
VERTICAL DATUM: NATIONAL GEODETIC VERTICAL DATUM OF 1929
HORIZONTAL DATUM: 1927 NORTH AMERICAN DATUM
To place on the predicted North American Datum of 1983,
move the projection lines as shown by dashed corner ticks
(2 meters south and 70 meters east)
There may be private inholdings within the boundaries of any
Federal and State Reservations shown on this map
Where omitted, land lines have not been established
Public Land Survey System is shown as published in 1961 and
verified or supplemented in 1987

PROVISIONAL MAP
Produced from original
manuscript drawings. Infor-
mation shown as of date of
field check. T

SCALE 1:24 000



CONTOUR INTERVAL 20 FEET
To convert feet to meters multiply by .3048
To convert meters to feet multiply by 3.2808

THIS MAP COMPLIES WITH NATIONAL MAP ACCURACY STANDARDS
FOR SALE BY U.S. GEOLOGICAL SURVEY, DENVER, COLORADO 80225
OR RESTON, VIRGINIA 22092



1	2	3	4	5	6	7	8
1	2	3	4	5	6	7	8

ROAD LEGEND
Improved Road
Unimproved Road
Trail
Interstate Route
U.S. Route
State Route
HOPE, ARIZONA
PROVISIONAL EDITION 1990
33113-F6-IT-024