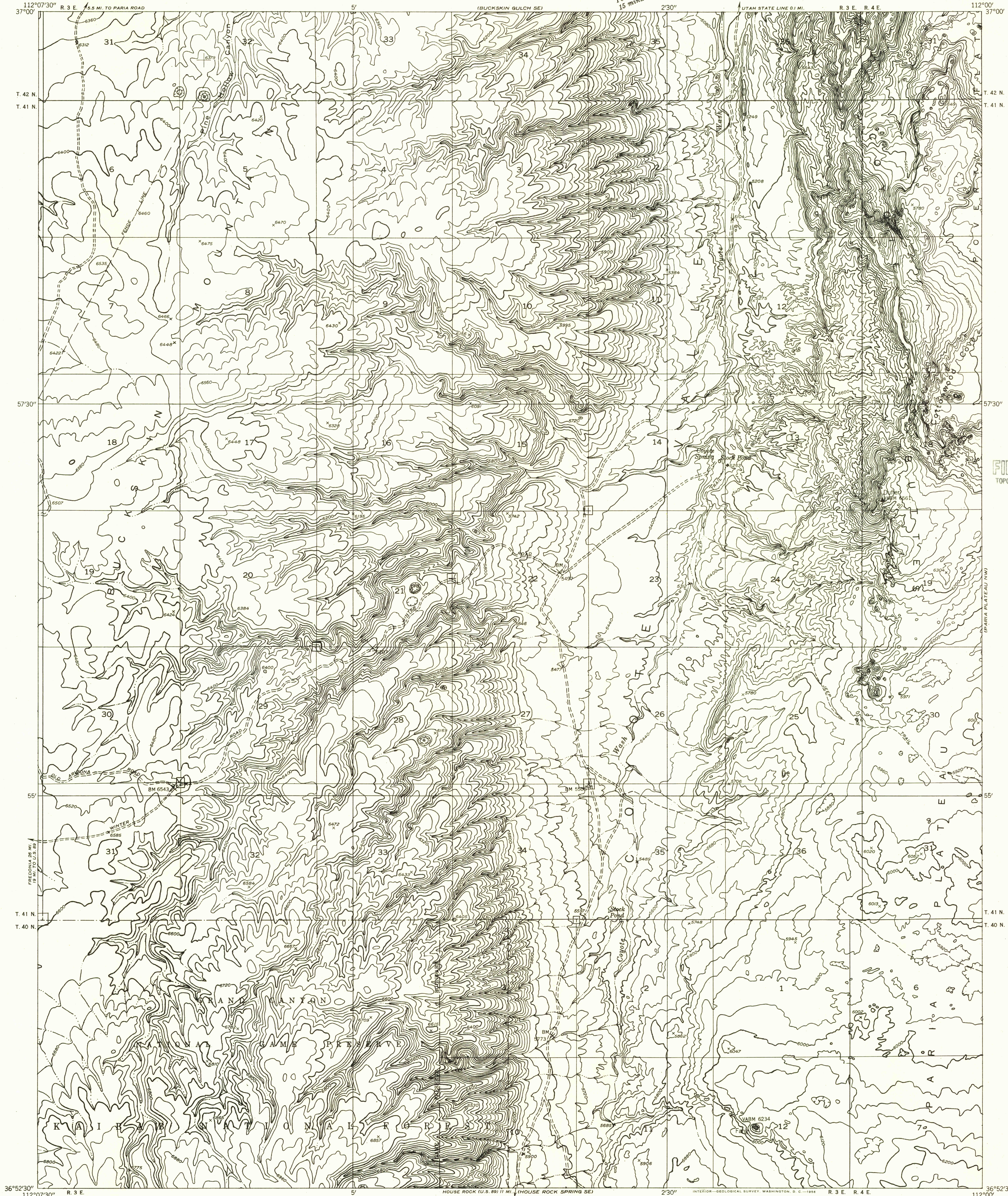
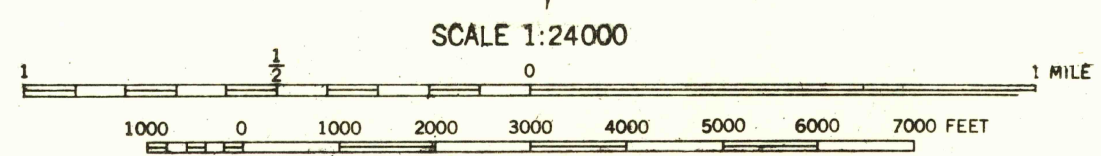
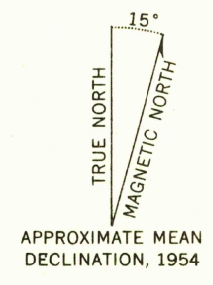


Preliminary edition  
Pending completion of 1:62,500 scale  
15 minute maps covering this area



U.S.G.S.  
FILE COPY  
TOPOGRAPHIC DIVISION

Mapped by the Geological Survey 1954  
Topography by multiplex methods from  
aerial photographs taken 1953  
Symbols and other detail herein  
drawn for 1:62,500 scale publication



CONTOUR INTERVAL 40 FEET  
DATUM IS MEAN SEA LEVEL

U.S.G.S.  
FILE COPY  
TOPOGRAPHIC DIVISION

USGS  
Historical File  
Topographic Division

ROAD CLASSIFICATION  
Improved ——— Unimproved - - - - -

HOUSE ROCK SPRING NE, ARIZ.  
N3652.5—W11200/7.5

FEB 13 1958  
2050