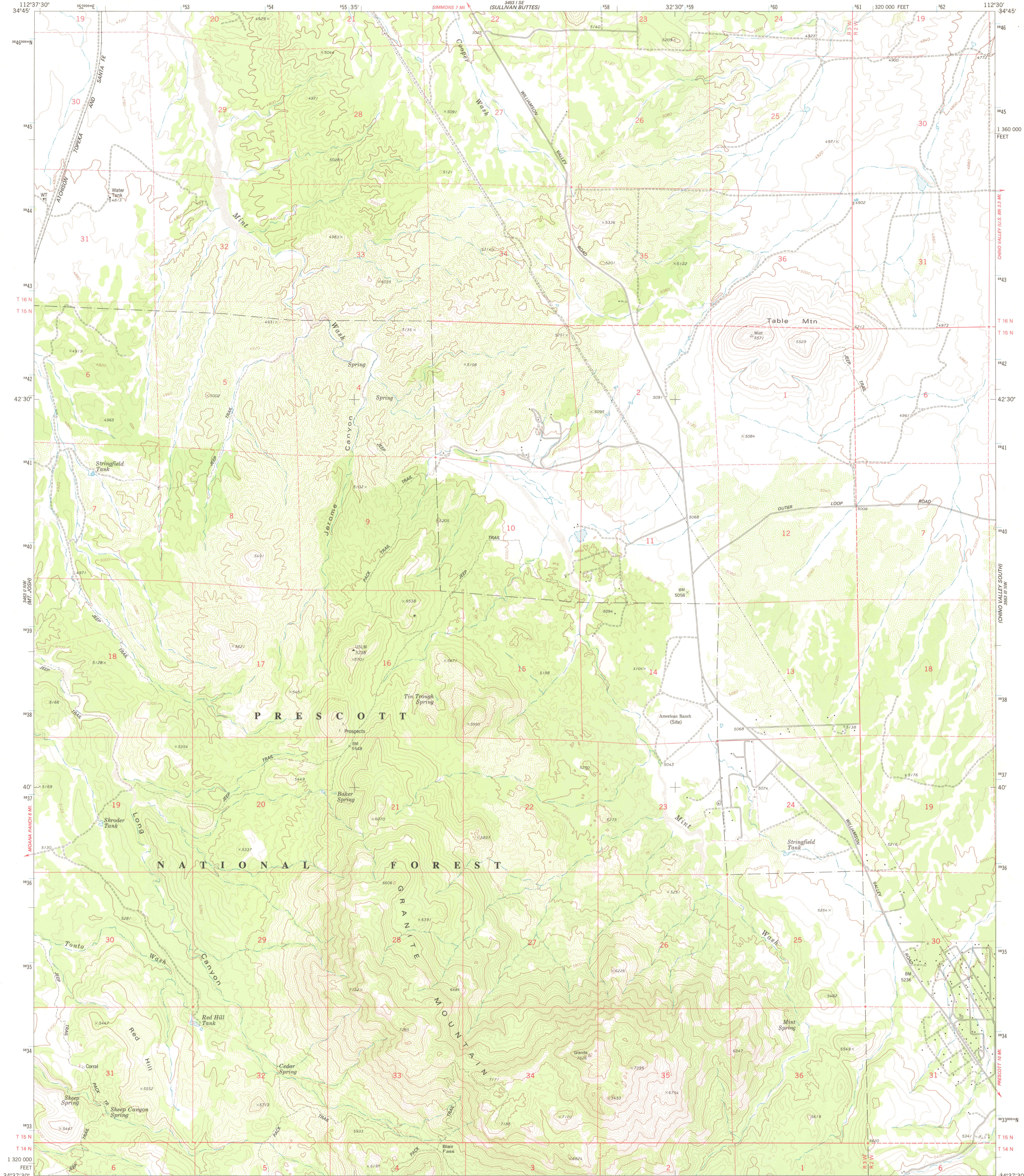
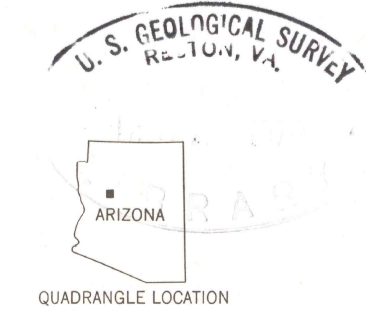
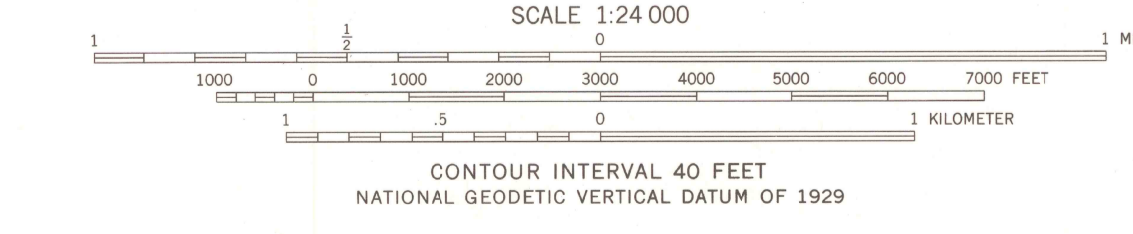
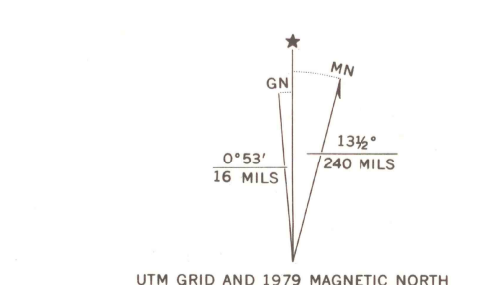




329 3/4 NW
(CHINO VALLEY NORTH)



Maped, edited, and published by the Geological Survey
Control by USGS and NOS/NOAA
Topography by photogrammetric methods from aerial
photographs taken 1973. Field checked 1974. Map edited 1979
Projection and 10,000-foot grid ticks: Arizona coordinate
system, central zone (transverse Mercator)
1000-meter Universal Transverse Mercator grid ticks,
zone 12, shown in blue. 1927 North American datum
To place on the predicted North American Datum 1983,
move the projection lines 1 meter north and
67 meters east as shown by dashed corner ticks
Fine red dashed lines indicate selected fence and field lines where
generally visible on aerial photographs. This information is unchecked
There may be private inholdings within the boundaries of
the National or State reservations shown on this map



ROAD CLASSIFICATION

Primary highway, hard surface	Light-duty road, hard or improved surface
Secondary highway, hard surface	Unimproved road
Interstate Route	U. S. Route
	State Route

THIS MAP COMPLIES WITH NATIONAL MAP ACCURACY STANDARDS
FOR SALE BY U. S. GEOLOGICAL SURVEY, DENVER, COLORADO 80225, OR RESTON, VIRGINIA 22092
A FOLDER DESCRIBING TOPOGRAPHIC MAPS AND SYMBOLS IS AVAILABLE ON REQUEST



JEROME CANYON, ARIZ.
NE/4 IRON SPRINGS 15' QUADRANGLE
N3437.5-W11230/7.5
1979
DMA 3453 II NE—SERIES V898