

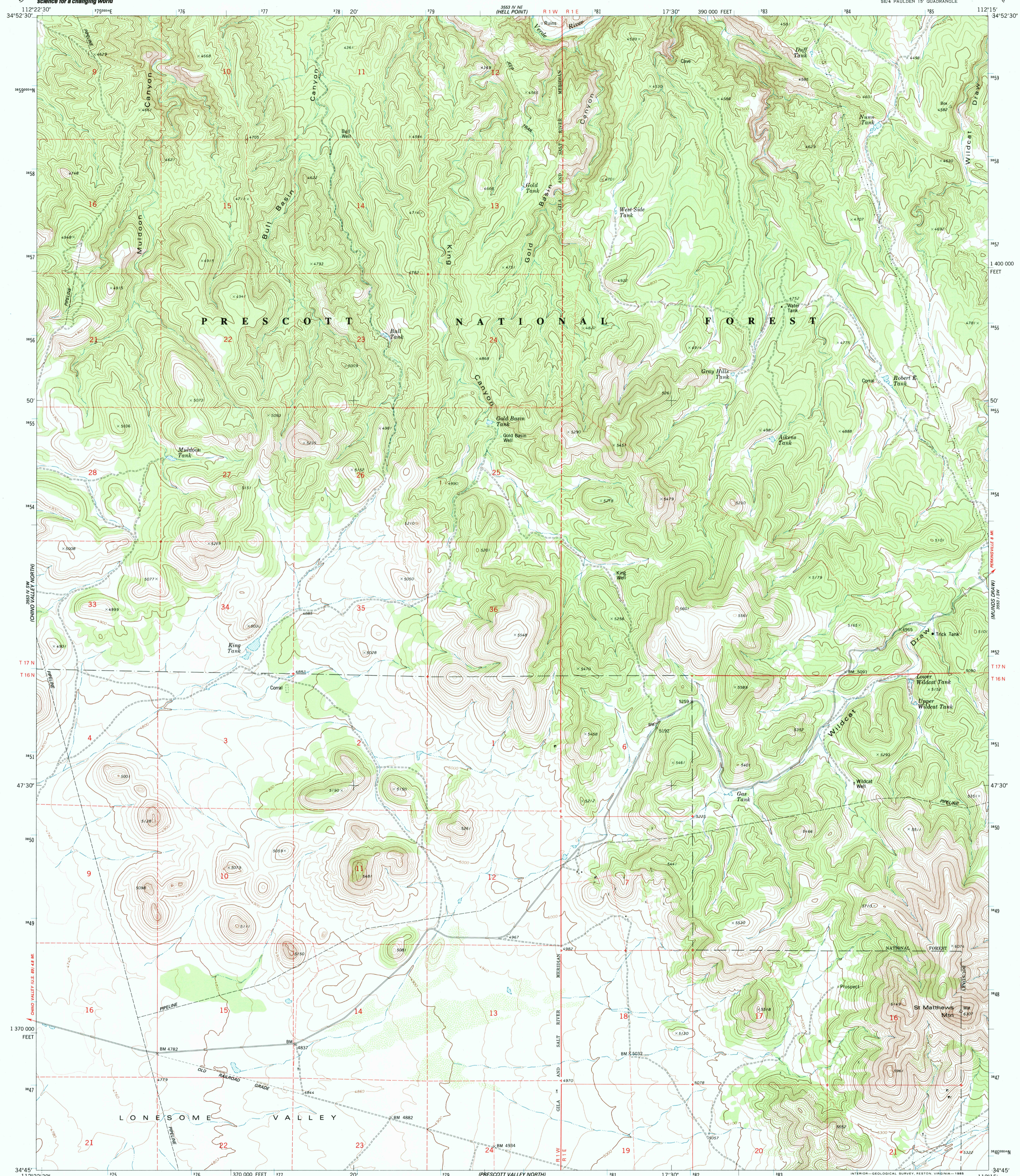
3553 IV NW
PERMANVILLE



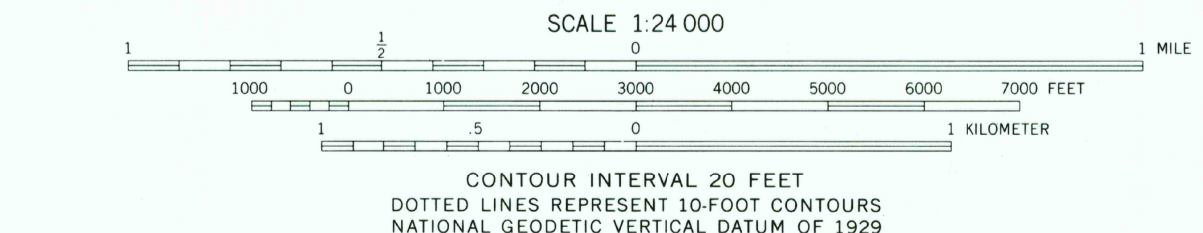
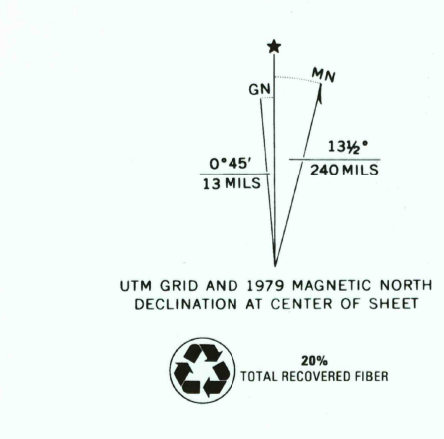
U.S. DEPARTMENT OF THE INTERIOR
U.S. GEOLOGICAL SURVEY

KING CANYON QUADRANGLE
ARIZONA—YAVAPAI CO.
7.5 MINUTE SERIES (TOPOGRAPHIC)
SE/4 PAULDEN 15' QUADRANGLE

3553 IV NW
PERMANVILLE



Mapped, edited, and published by the Geological Survey
Control by USGS and NOS/NOAA
Topography by photogrammetric methods from aerial photographs taken 1973. Field checked 1974. Map edited 1979
Projection and 10,000-foot grid ticks: Arizona coordinate system, central zone (transverse Mercator)
1000-meter Universal Transverse Mercator grid ticks, zone 12, shown in blue. 1927 North American datum
To place on the predicted North American Datum 1983 move the projection lines 1 meter north and 67 meters east as shown by dashed corner ticks
Where omitted, land lines have not been established
There may be private inholdings within the boundaries of the National or State reservations shown on this map



ROAD CLASSIFICATION

Primary highway, hard surface	Light-duty road, hard or improved surface
Secondary highway, hard surface	Unimproved road
Interstate Route	U. S. Route
	State Route

RECEIVED
MAY 31 2000

KING CANYON, ARIZ.
SE/4 PAULDEN 15' QUADRANGLE
34112-G3-TF-024
1979

THIS MAP COMPLIES WITH NATIONAL MAP ACCURACY STANDARDS
FOR SALE BY U.S. GEOLOGICAL SURVEY, P.O. BOX 25286, DENVER, COLORADO 80225
A FOLDER DESCRIBING TOPOGRAPHIC MAPS AND SYMBOLS IS AVAILABLE ON REQUEST

USGS NMD
HISTORICAL MAP ARCHIVES

DMA 3553 IV SE—SERIES V898

