

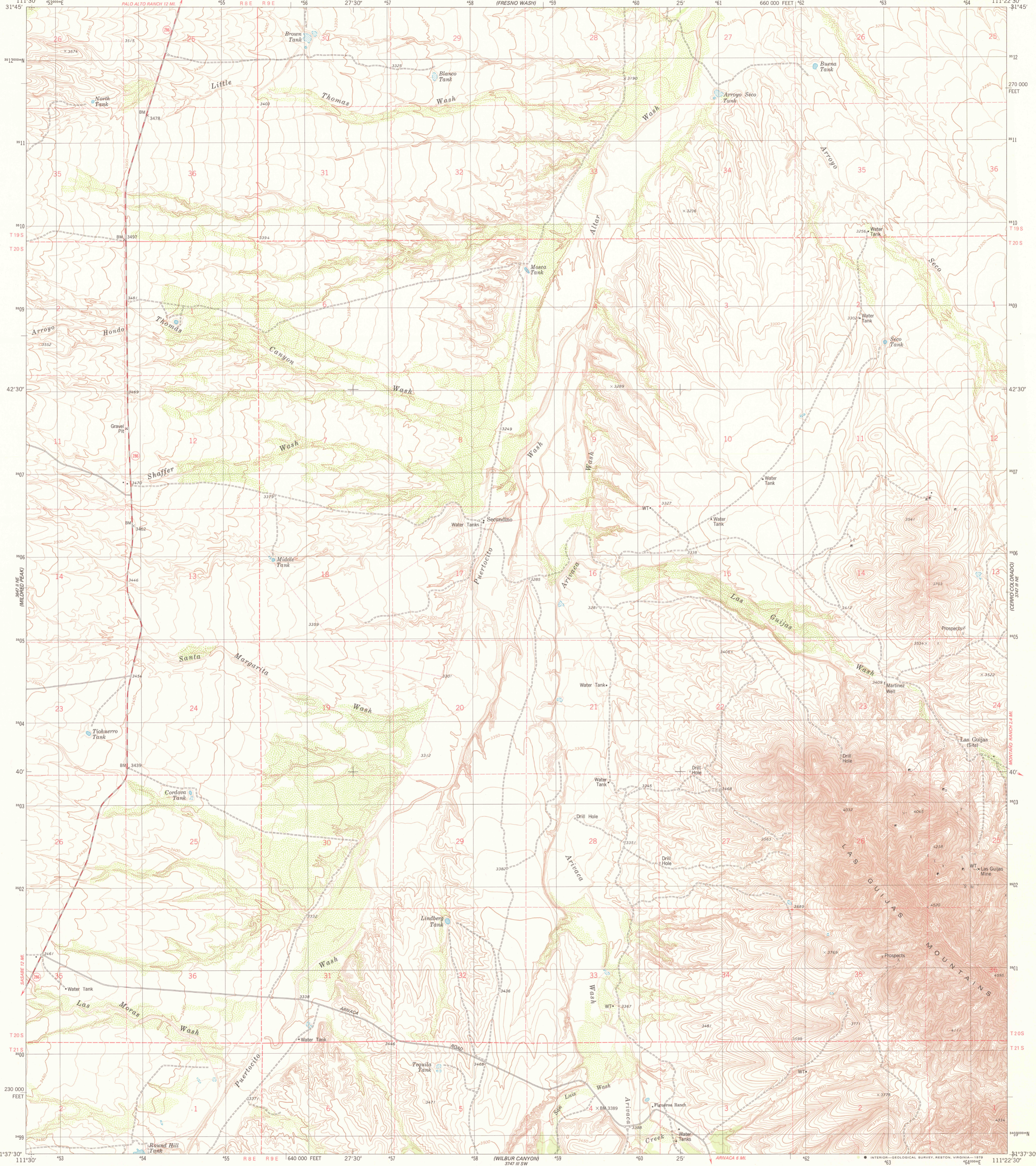
327° 15' E  
(PINALO JUNCTION  
PEAK)

UNITED STATES  
DEPARTMENT OF THE INTERIOR  
GEOLOGICAL SURVEY



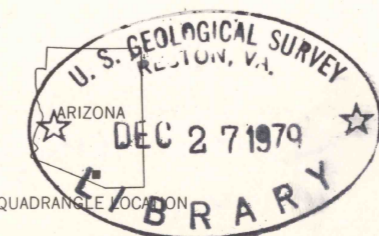
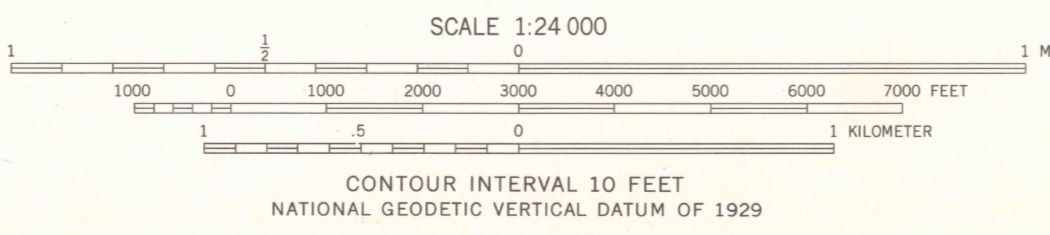
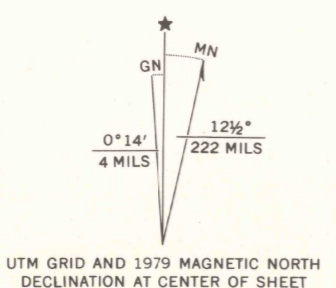
LAS GUIJAS QUADRANGLE  
ARIZONA—PIMA CO.  
7.5 MINUTE SERIES (TOPOGRAPHIC)  
NW/4 ARIVACA 15' QUADRANGLE

327° 15' E  
(PENTAS HILLS)



327° 15' E  
(PINALO JUNCTION  
PEAK)

Mapped, edited, and published by the Geological Survey  
Control by USGS and NOS/NOAA  
Topography by photogrammetric methods from aerial  
photographs taken 1974. Field checked 1975  
Map edited 1979  
Projection and 10,000-foot grid ticks: Arizona coordinate  
system, central zone (transverse Mercator)  
1000-meter Universal Transverse Mercator grid, zone 12  
1927 North American Datum  
To place on the predicted North American Datum 1983  
move the projection lines 9 meters south and  
63 meters east as shown by dashed corner ticks  
Fine red dashed lines indicate selected fence and field lines where  
generally visible on aerial photographs. This information is unchecked



ROAD CLASSIFICATION

Primary highway, hard surface	Light-duty road, hard or improved surface
Secondary highway, hard surface	Unimproved road
Interstate Route	U. S. Route
	State Route

THIS MAP COMPLIES WITH NATIONAL MAP ACCURACY STANDARDS  
FOR SALE BY U. S. GEOLOGICAL SURVEY, DENVER, COLORADO 80225, OR RESTON, VIRGINIA 22092  
A FOLDER DESCRIBING TOPOGRAPHIC MAPS AND SYMBOLS IS AVAILABLE ON REQUEST



LAS GUIJAS, ARIZ.  
NW/4 ARIVACA 15' QUADRANGLE  
N3137.5—W11122.5/7.5

1979  
DMA 3747 III NW—SERIES V898