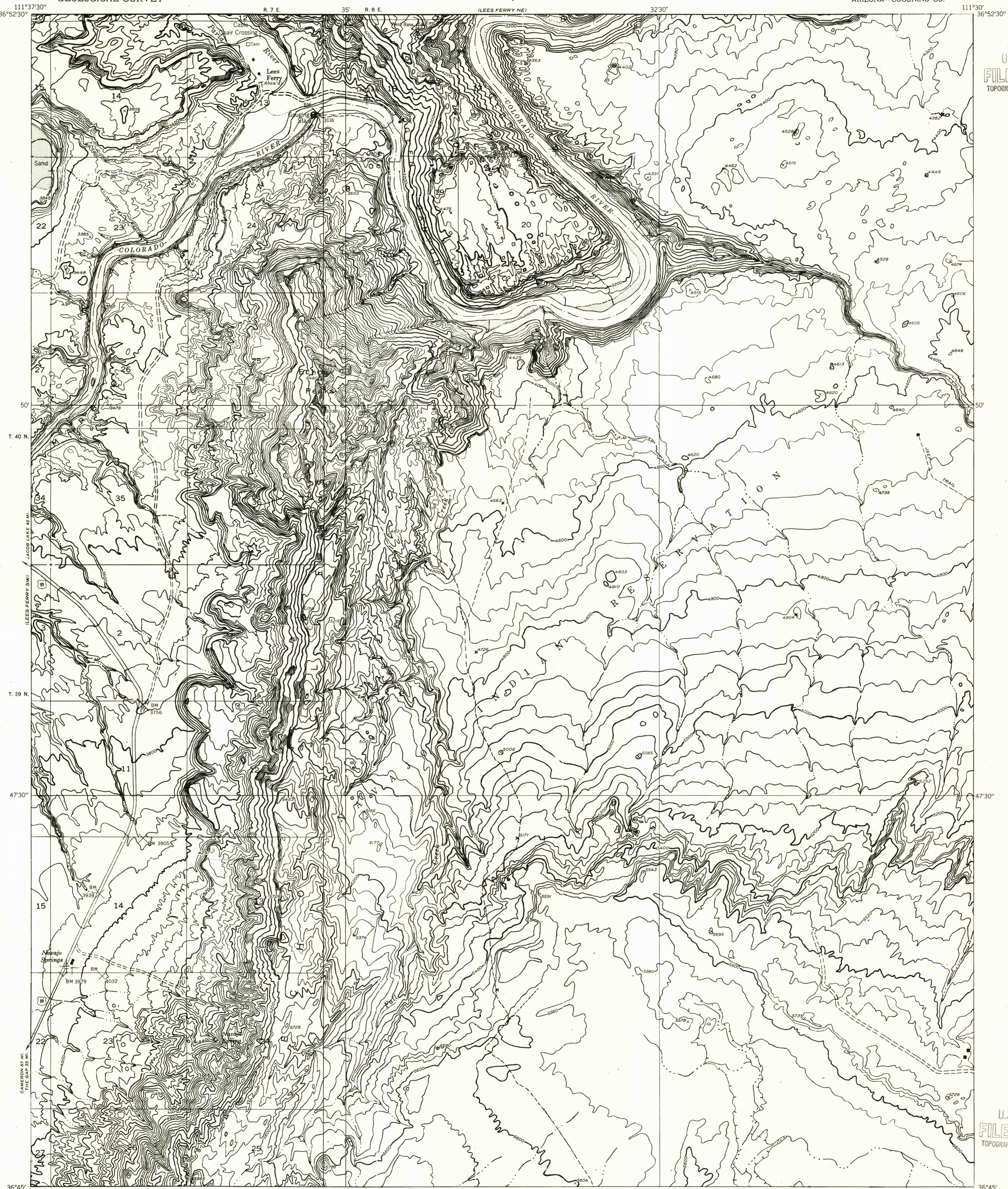


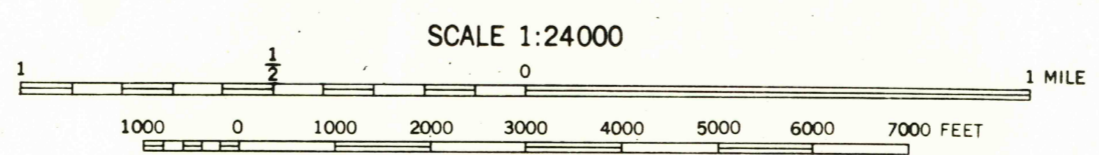
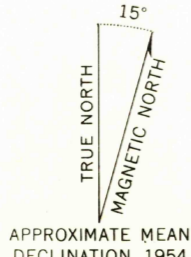
Preliminary edition
Pending completion of 1:62,500 scale
15 minute maps covering this area.

U.S.G.S.
FILE COPY
TOPOGRAPHIC DIVISION



U.S.G.S.
FILE COPY
TOPOGRAPHIC DIVISION

Map by the Geological Survey 1954
Topography by multiplex methods from
aerial photographs taken 1951



CONTOUR INTERVAL 40 FEET
DATUM IS MEAN SEA LEVEL

USGS
Historical File
Topographic Division

ROAD CLASSIFICATION
Improved ——— Unimproved - - - - -

LEES FERRY SE, ARIZ.
N3645—W11130/7.5