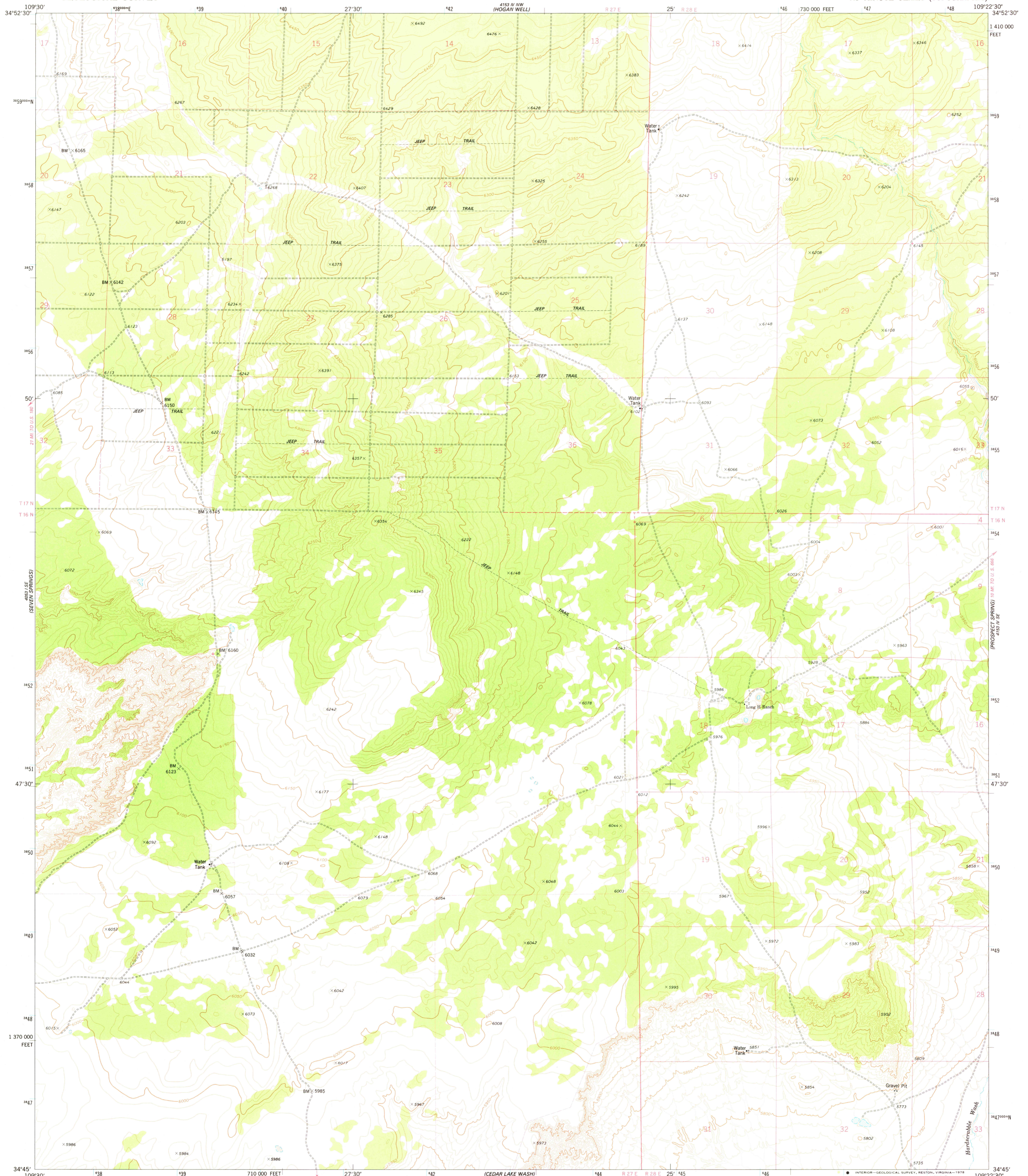


UNITED STATES  
DEPARTMENT OF THE INTERIOR  
GEOLOGICAL SURVEY

LONG H RANCH QUADRANGLE  
ARIZONA—APACHE CO.  
7.5 MINUTE SERIES (TOPOGRAPHIC)



Mapped, edited, and published by the Geological Survey

Control by USGS and NOS/NOAA

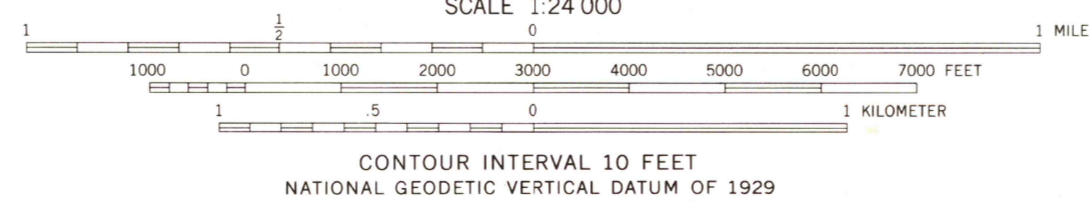
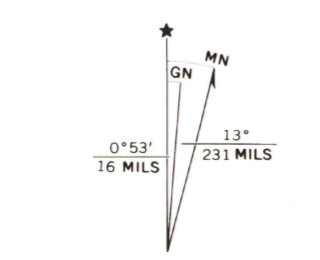
Topography by photogrammetric methods from aerial photographs taken 1972. Field checked 1974. Map edited 1977

Projection and 10,000-foot grid ticks: Arizona coordinate system, east zone (transverse Mercator)

1000-meter Universal Transverse Mercator grid ticks, zone 12, shown in blue. 1927 North American datum

Fine red dashed lines indicate selected fence and field lines where generally visible on aerial photographs. This information is unchecked

Certain land lines are omitted because of insufficient data.



ROAD CLASSIFICATION

Primary highway, hard surface	Light-duty road, hard or improved surface
Secondary highway, hard surface	Unimproved road
○ Interstate Route	□ U. S. Route
○ State Route	

THIS MAP COMPLIES WITH NATIONAL MAP ACCURACY STANDARDS  
FOR SALE BY U. S. GEOLOGICAL SURVEY, DENVER, COLORADO 80225, OR RESTON, VIRGINIA 22092  
A FOLDER DESCRIBING TOPOGRAPHIC MAPS AND SYMBOLS IS AVAILABLE ON REQUEST

USGS  
Historical File  
Topographic Division

JUL 17 1978

LONG H RANCH, ARIZ.  
N3445—W10922.5/7.5

1977

AMS 4153 IV SW—SERIES V898