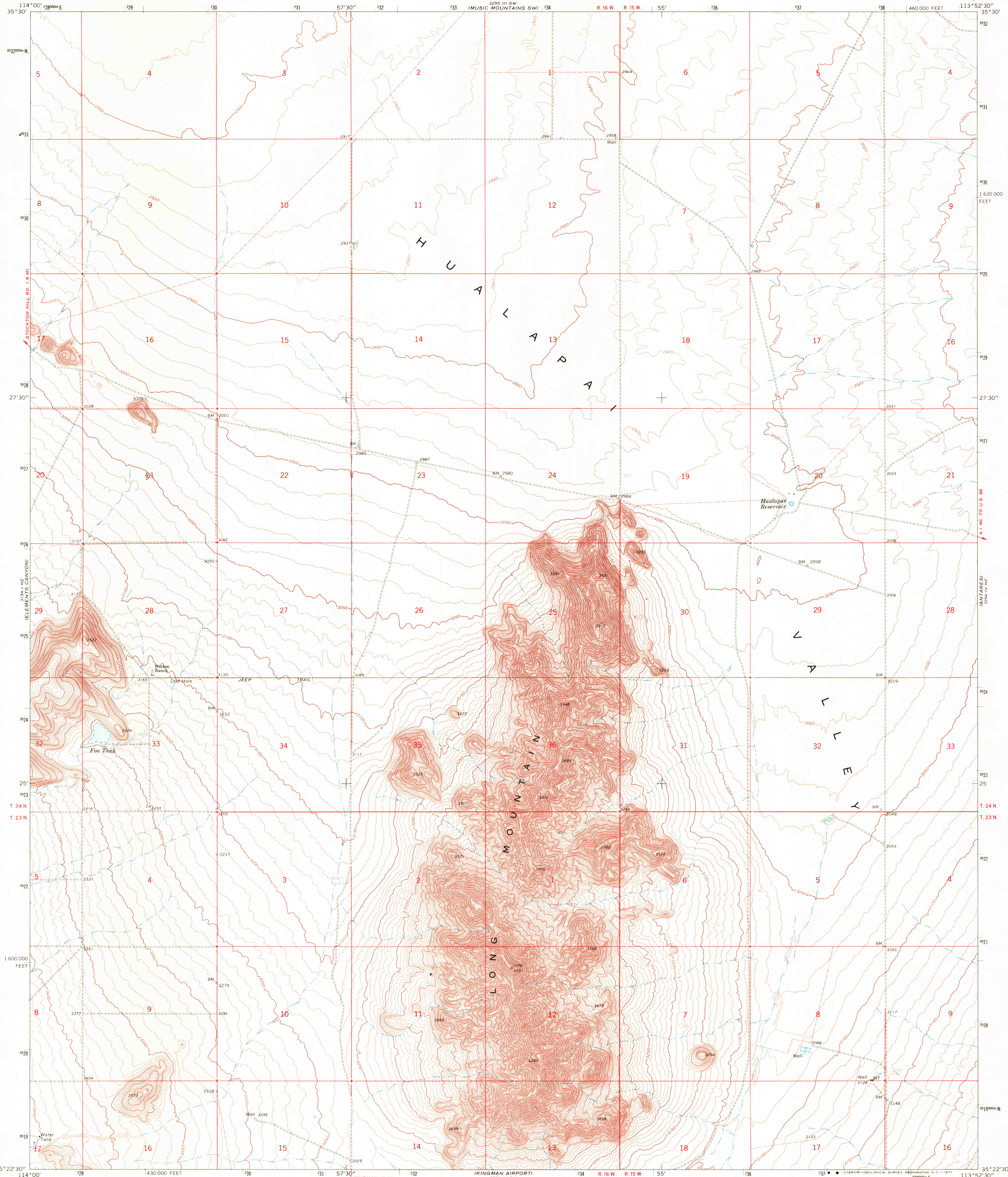


3254 I NE
3254 I SE

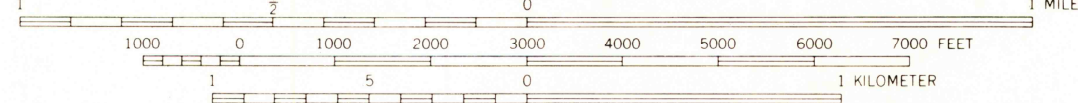
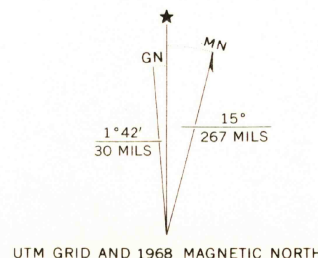
3254 II SE
3254 II NE

UNITED STATES
DEPARTMENT OF THE INTERIOR
GEOLOGICAL SURVEY

LONG MOUNTAIN QUADRANGLE
ARIZONA—MOHAVE CO.
7.5 MINUTE SERIES (TOPOGRAPHIC)



Mapped, edited, and published by the Geological Survey
Control by USGS and USC&GS
Topography by photogrammetric methods from aerial
photographs taken 1967. Field checked 1968
Polyconic projection. 1927 North American datum
10,000 foot grid based on Arizona coordinate system, west zone
1000 meter Universal Transverse Mercator grid ticks,
zone 12, shown in blue
Fine red dashed lines indicate selected fence lines



CONTOUR INTERVAL 10 FEET
DATUM IS MEAN SEA LEVEL



USGS
HISTORICAL FILE
TOPOGRAPHIC DIVISION

ROAD CLASSIFICATION
Unimproved dirt -----

THIS MAP COMPLIES WITH NATIONAL MAP ACCURACY STANDARDS
FOR SALE BY U.S. GEOLOGICAL SURVEY, DENVER, COLORADO 80225, OR WASHINGTON, D. C. 20242
A FOLDER DESCRIBING TOPOGRAPHIC MAPS AND SYMBOLS IS AVAILABLE ON REQUEST

LONG MOUNTAIN, ARIZ.
N3522.5-W11352.5/7.5

1968

OCT 19 1971

AMS 3254 IV NW—SERIES V898