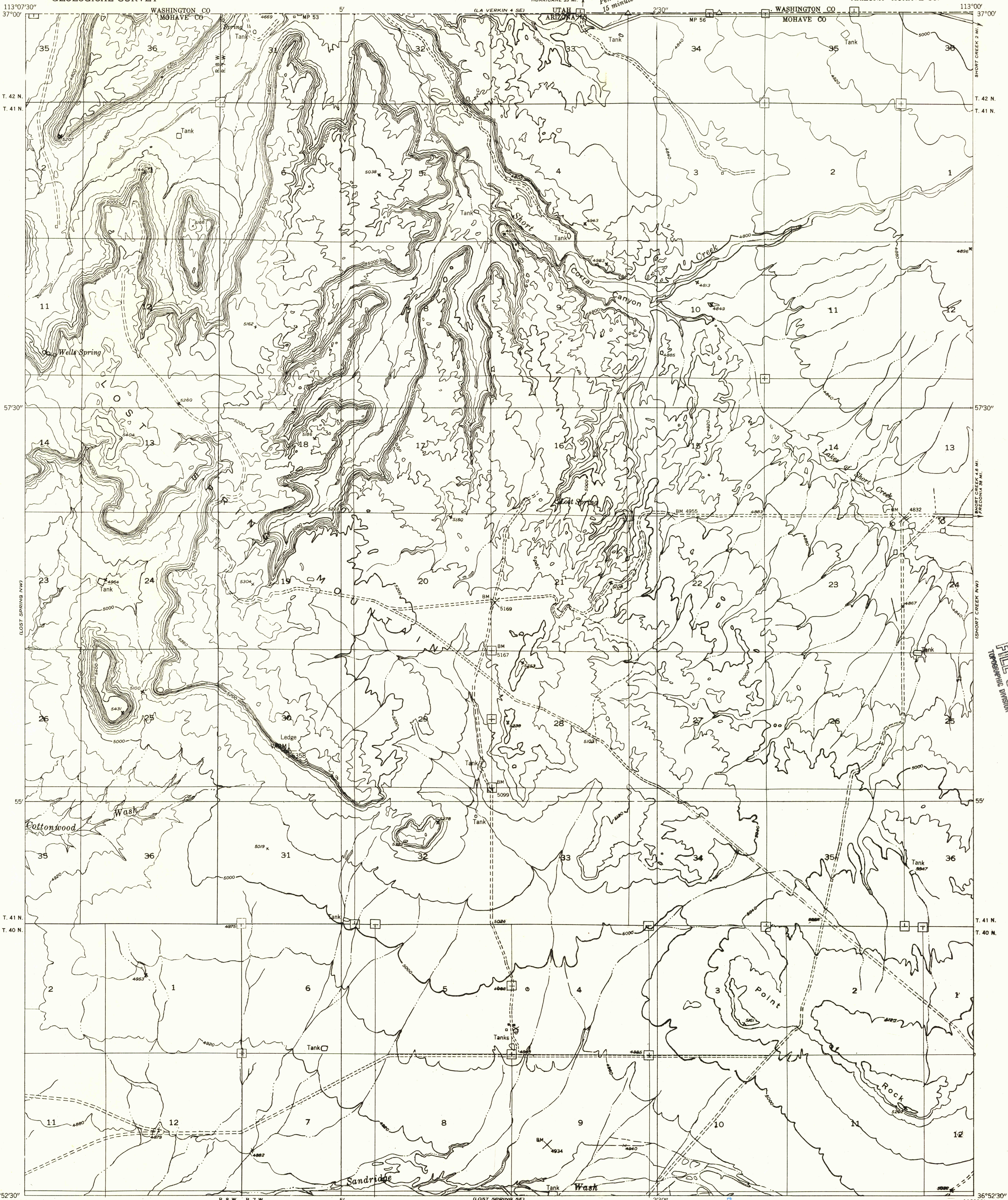


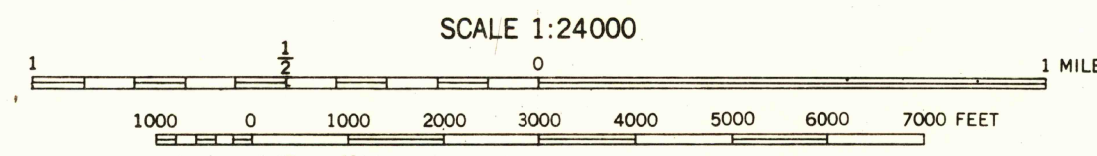
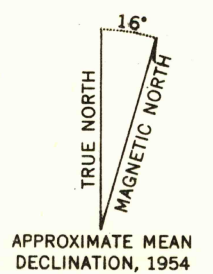
DEPARTMENT OF THE INTERIOR
GEOLOGICAL SURVEY

LOST SPRING NE QUADRANGLE
ARIZONA—MOHAVE CO.

Preliminary edition
Pending completion of 1:62,500 scale
15 minute maps covering this area



Mapped, edited, and published by the Geological Survey
Topography by multiplex methods from
aerial photographs taken 1953
Symbols and other detail herein
drawn for 1:62 500 scale publication



CONTOUR INTERVAL 40 FEET
DATUM IS MEAN SEA LEVEL

U.S.G.S.
Historical File
Topographic Division

ROAD CLASSIFICATION
Improved ——— Unimproved - - - - -

U.S.G.S.
FILE COPY
TOPOGRAPHIC DIVISION

LOST SPRING NE, ARIZ.
N3652.5—W11300/7.5

U.S.G.S.
FILE COPY
TOPOGRAPHIC DIVISION

SEP 19 1956
2050