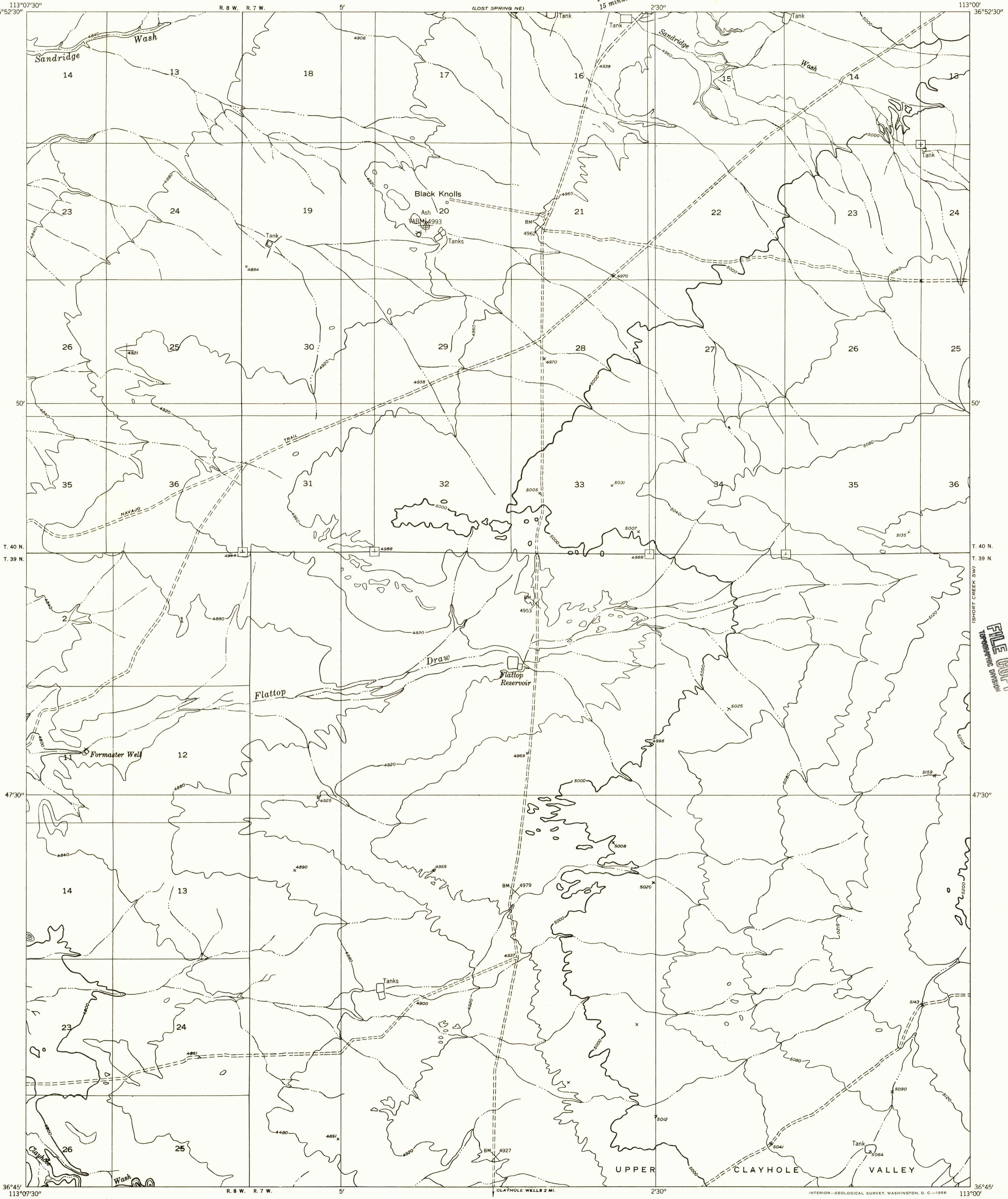


DEPARTMENT OF THE INTERIOR  
GEOLOGICAL SURVEY

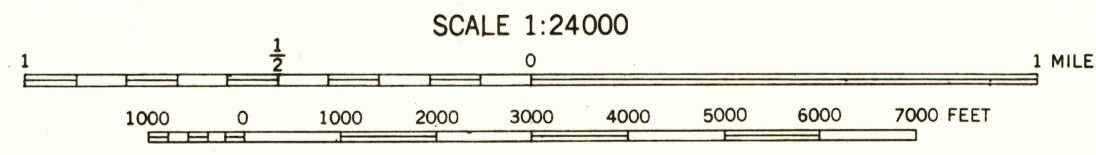
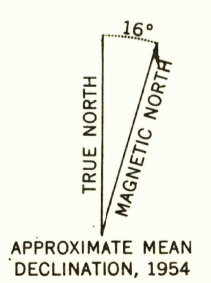
LOST SPRING SE QUADRANGLE  
ARIZONA—MOHAVE CO.

Preliminary edition  
Pending completion of 1:62,500 scale  
15 minute maps covering this area



U.S.G.S.  
FILE COPY  
TOPOGRAPHIC DIVISION

Mapped by the Geological Survey 1954  
Topography by multiplex methods from  
aerial photographs taken 1953  
Symbols and other detail herein  
drawn for 1:62,500 scale publication



CONTOUR INTERVAL 40 FEET  
DATUM IS MEAN SEA LEVEL

USGS  
Historical File  
Topographic Division

U.S.G.S.  
FILE COPY  
TOPOGRAPHIC DIVISION

ROAD CLASSIFICATION  
Improved ——— Unimproved - - - - -

LOST SPRING SE, ARIZ.  
N3645—W11300/7.5

SEP 19 1956