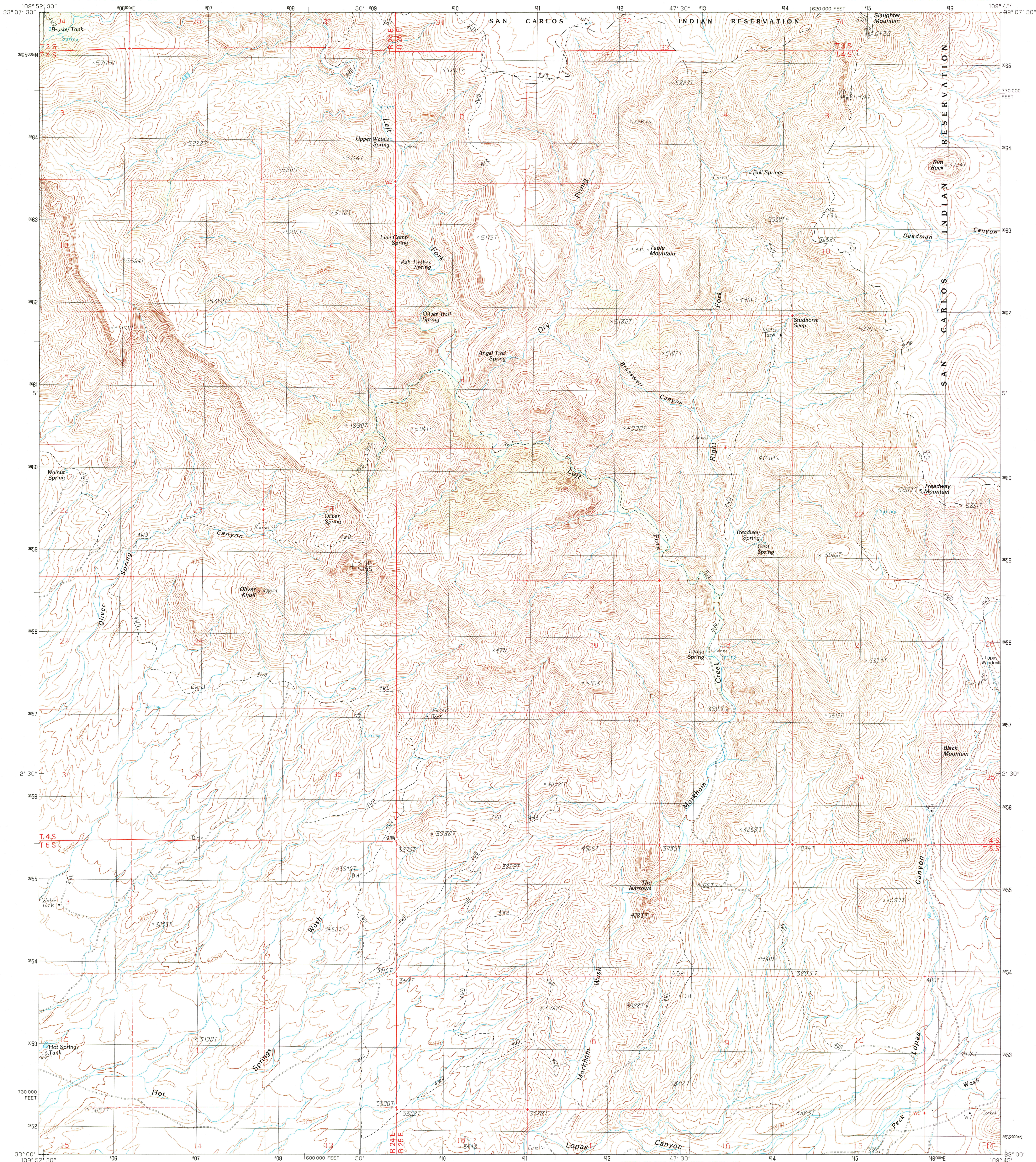


UNITED STATES
DEPARTMENT OF THE INTERIOR
GEOLOGICAL SURVEY

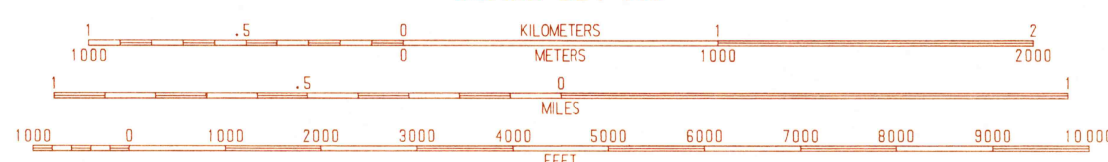
MARKHAM CREEK QUADRANGLE
ARIZONA-GRAHAM CO.
7.5 MINUTE SERIES (TOPOGRAPHIC)



PRODUCED BY THE UNITED STATES GEOLOGICAL SURVEY
CONTROL BY USGS, NOS/NOAA
COMPILED FROM AERIAL PHOTOGRAPHS TAKEN 1957
PLANE TABLE SURVEYS 1960
LIMITED REVISION FROM AERIAL PHOTOGRAPHS TAKEN 1984
FIELD CHECKED 1987 MAP EDITED 1989
PROJECTION TRANSVERSE MERCATOR
GRID: 1000-METER UNIVERSAL TRANSVERSE MERCATOR ZONE 12
10000-FOOT STATE GRID TICKS ARIZONA, EAST ZONE
HORIZONTAL DATUM 1927 NORTH AMERICAN DATUM
To place on the predicted North American Datum of 1983,
move the projection lines as shown by dashed corner ticks
(5 meters south and 60 meters east)
There may be private inholdings within the boundaries of any
Federal and State Reservations shown on this map
Public Land Survey System is shown as published in 1960 and
verified or supplemented in 1987
Where omitted, land lines have not been established

PROVISIONAL MAP
Produced from original
manuscript drawings. Infor-
mation shown as of date of
field check. T

SCALE 1:24 000



CONTOUR INTERVAL 40 FEET
To convert feet to meters multiply by .3048
To convert meters to feet multiply by 3.2808

THIS MAP COMPLIES WITH NATIONAL MAP ACCURACY STANDARDS
FOR SALE BY U.S. GEOLOGICAL SURVEY, DENVER, COLORADO 80225
OR RESTON, VIRGINIA 22092

ARIZONA

QUADRANGLE LOCATION

1	2	3
4		5
6	7	8

ADJOINING 7.5' QUADRANGLE NAMES

ROAD LEGEND

Improved Road
Unimproved Road
Trail
Interstate Route U.S. Route State Route

MARKHAM CREEK, ARIZONA
PROVISIONAL EDITION 1989

33109-A7-TT-024

