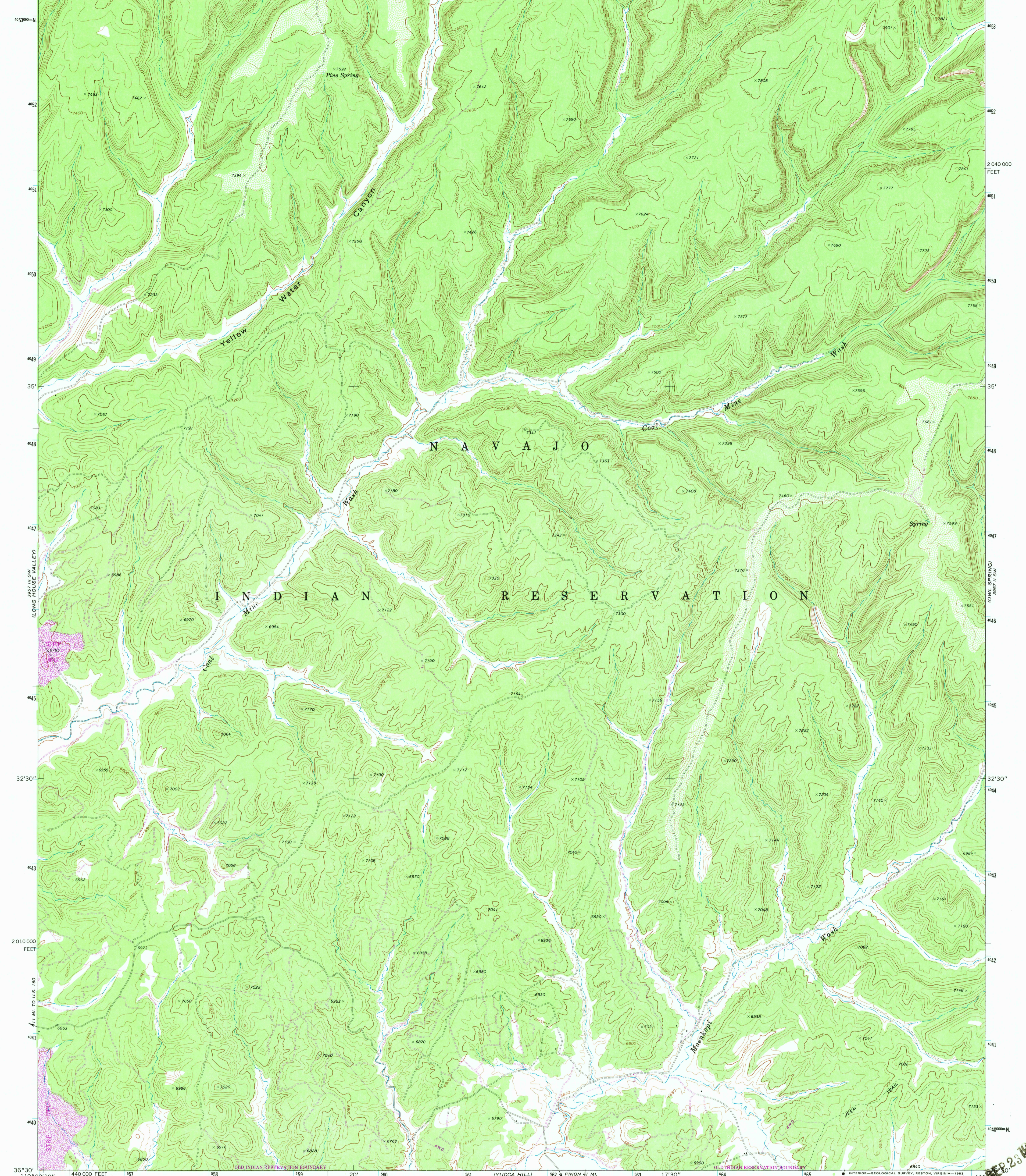
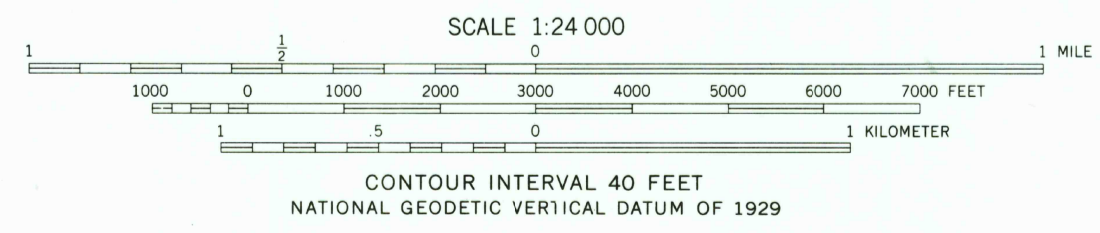
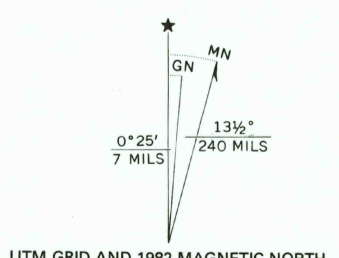


110° 22' 30" 557000m E 158 20' 160 161 3957 III NE (KAYENTA WEST) 162 163 17' 30" 164 165 470 000 FEET 166 110° 15' 36' 37' 30"



Mapped, edited, and published by the Geological Survey
Control by USGS and NOS/NOAA
Topography by photogrammetric methods from aerial
photographs taken 1967. Field checked 1968
Polyconic projection. 1927 North American datum
10,000-foot grid based on Arizona coordinate system, east zone
1000-meter Universal Transverse Mercator grid ticks,
zone 12, shown in blue
To place on the predicted North American Datum 1983
move the projection lines 3 meters north and
62 meters east as shown by dashed corner ticks
Land lines have not been established in this area
There may be private inholdings within the boundaries of
the National or State reservations shown on this map



ROAD CLASSIFICATION
Light-duty ————— Unimproved dirt - - - - -

CONTOUR INTERVAL 40 FEET
NATIONAL GEODETIC VERTICAL DATUM OF 1929
THIS MAP COMPLIES WITH NATIONAL MAP ACCURACY STANDARDS
FOR SALE BY U. S. GEOLOGICAL SURVEY, DENVER, COLORADO 80225, OR RESTON, VIRGINIA 22092
A FOLDER DESCRIBING TOPOGRAPHIC MAPS AND SYMBOLS IS AVAILABLE ON REQUEST

Revisions shown in purple compiled from aerial photographs
taken 1980 and other source data. This information not
field checked. Map edited 1982

MARSH PASS SE, ARIZ.
N3630—W11015/7.5
1968
PHOTOREVISED 1982
DMA 3957 III SE—SERIES V898

GREASY SPRING
3957 III SW
MARSH PASS

CLIFF ROSE HILL
3957 III SE