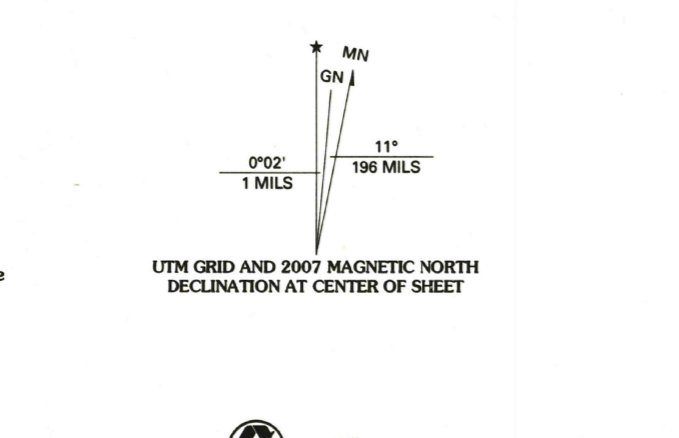


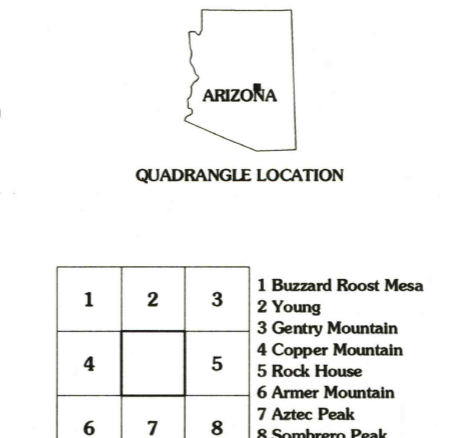
Produced by the United States Geological Survey 1986
 Revision by USDA Forest Service 2004
 Topography compiled 1981. Planimetry derived from imagery taken 2003 and other sources. Public Land Survey System and survey control current as of 2006. Boundaries current as of 2006.
 North American Datum of 1983 (NAD 83). Projection and 1 000-meter grid: Universal Transverse Mercator, zone 12
 2 500-meter ticks: Arizona Coordinate System (east zone)
 North American Datum of 1927 (NAD 27) is shown by dashed corner ticks
 The values of the shift between NAD 83 and NAD 27 for 7.5-minute intersections are obtainable from National Geodetic Survey NADCON software
 Non-National Forest System lands within the National Forest
 Inholdings may exist in other National or State reservations
 This map is not a legal document. Public lands are subject to change and leasing, and may have access restrictions; check with appropriate offices. Obtain permission before entering private lands
 Protracted Blocks (PB) are unsurveyed land of uncertain acreage



SCALE 1:24 000

CONTOUR INTERVAL 40 FEET
 NATIONAL GEODETIC VERTICAL DATUM OF 1929
 TO CONVERT FROM FEET TO METERS, MULTIPLY BY 0.3048

THIS MAP COMPLIES WITH NATIONAL MAP ACCURACY STANDARDS
 FOR SALE BY U.S. GEOLOGICAL SURVEY, P.O. BOX 25286, DENVER, COLORADO 80225
 A FOLDER DESCRIBING TOPOGRAPHIC MAPS AND SYMBOLS IS AVAILABLE ON REQUEST



HIGHWAYS AND ROADS

Interstate.....	Primary highway.....
U.S.	Secondary highway.....
State.....	Light-duty road.....
County.....	Composition: Unspecified.....
National Forest, suitable for passenger cars.....	Paved.....
National Forest, suitable for high clearance vehicles.....	Gravel.....
National Forest Trail.....	Dirt.....
	Unimproved: 4 wheel drive.....
	Trail.....
	Gate, Barrier.....

MCFADDEN PEAK, AZ 2004

33110-H8-TF-024
 NGA 3851 IV NW-SERIES V898

USGS Library
 Reston, VA
 Topo Archive

ISBN 1-411-30324-5
 9 781411 303245

USGS LIBRARY - RESTON
 3 1818 00532136 7