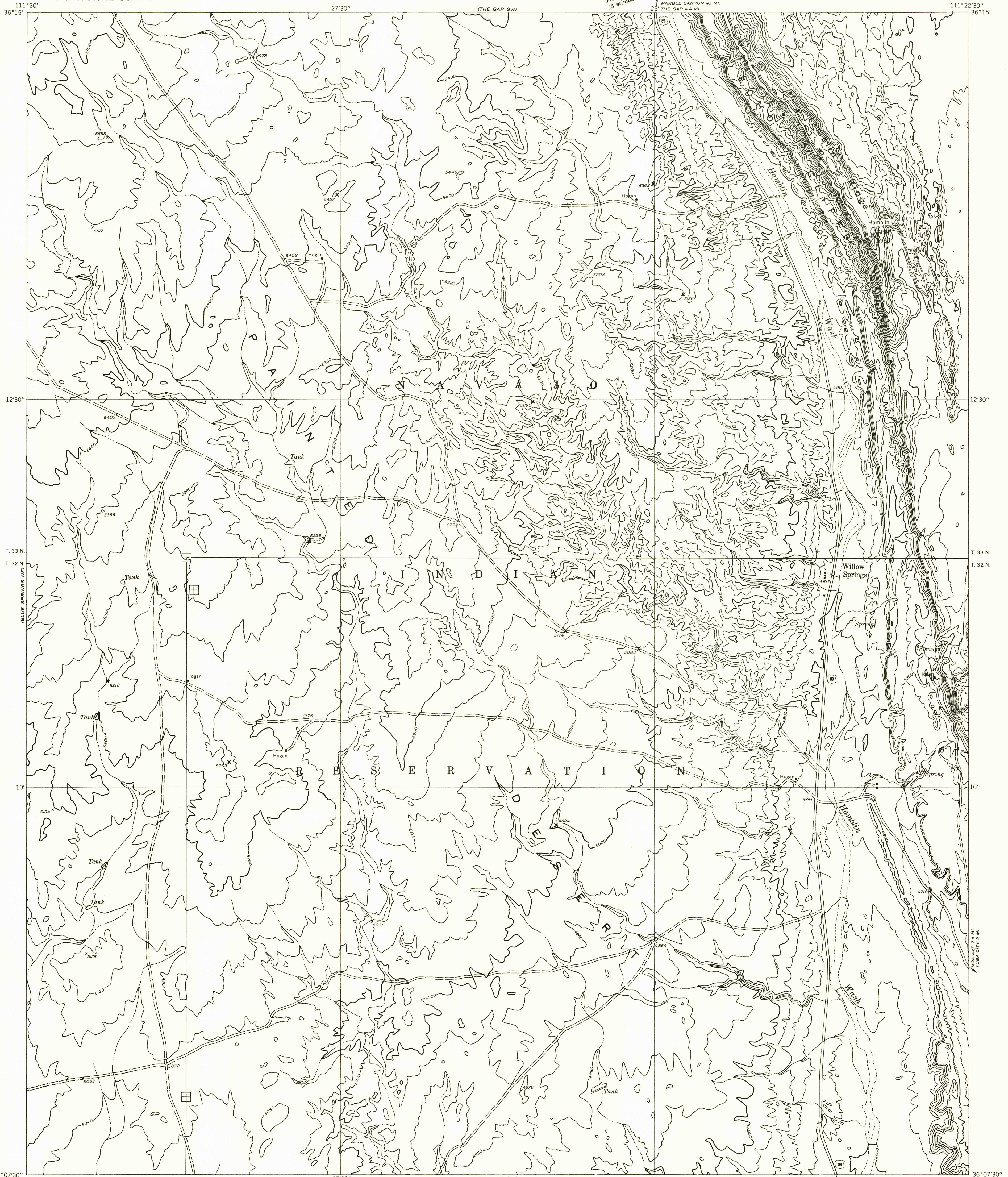
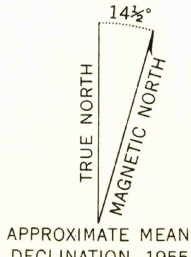


Preliminary edition
Pending completion of 1:62,500 scale
15 minute maps covering this area

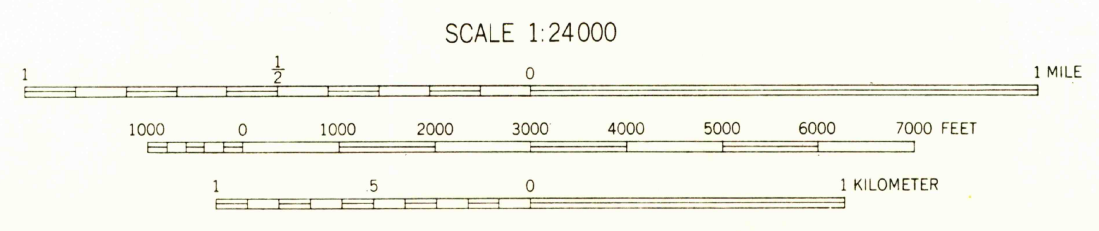


36°07'30" 111°30' 27'30" (MCA AVE SW) 25' INTERIOR-GEOLOGICAL SURVEY, WASHINGTON, D. C.—1957 CAMERON 18 MI. 36°07'30" 111°22'30"

Mapped by the Geological Survey 1955
Topography by multiplex methods from
aerial photographs taken 1953
Symbols and other detail herein
drawn for 1:62,500 scale publication



APPROXIMATE MEAN
DECLINATION, 1955



CONTOUR INTERVAL 40 FEET
DATUM IS MEAN SEA LEVEL

USGS
Historical File
Topographic Division

U.S.G.S.
FILE COPY
TOPOGRAPHIC DIVISION

ROAD CLASSIFICATION
Improved ——— Unimproved - - - - -

MOA AVE NW, ARIZ.
N36075—W111225/7.5