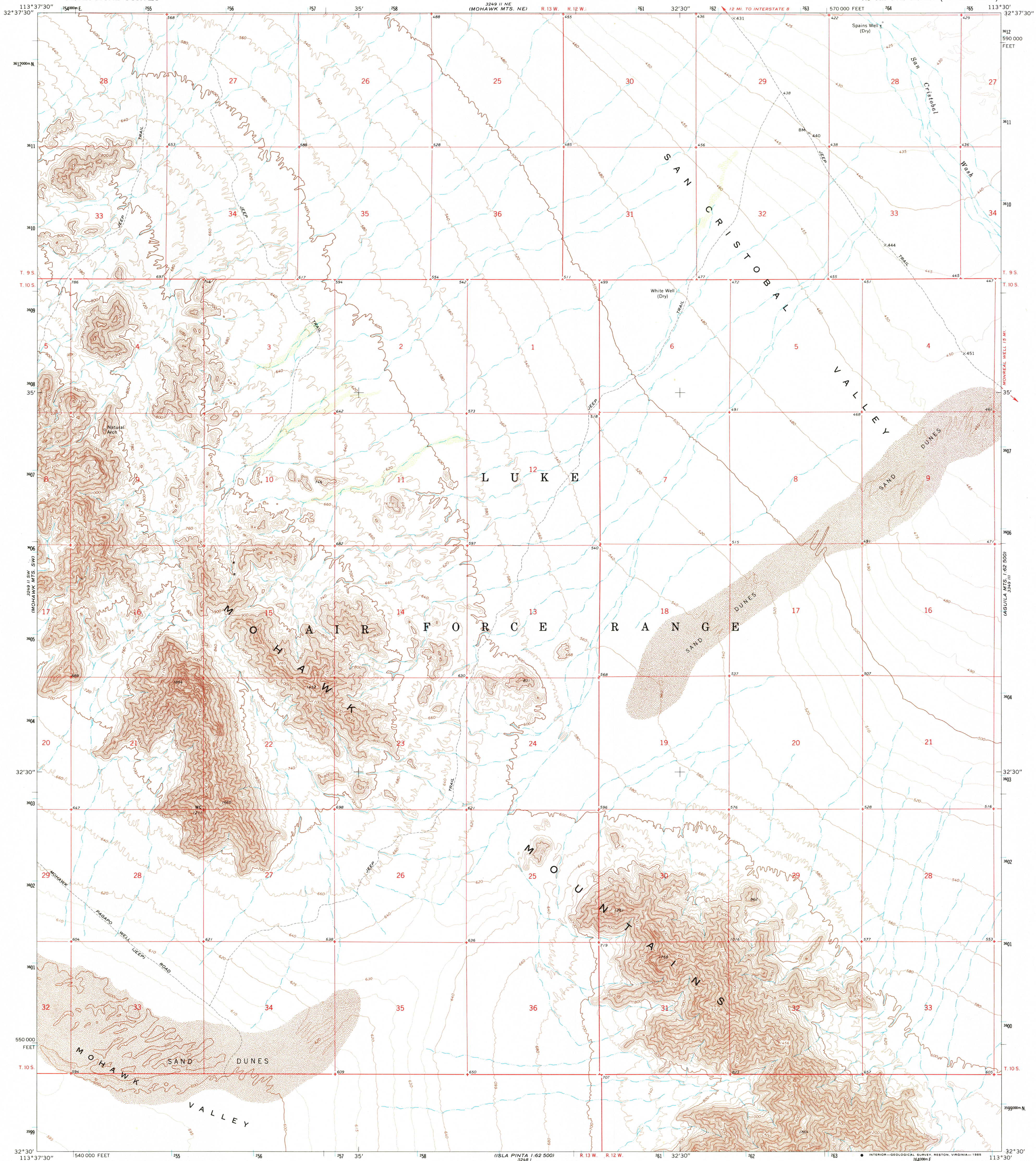
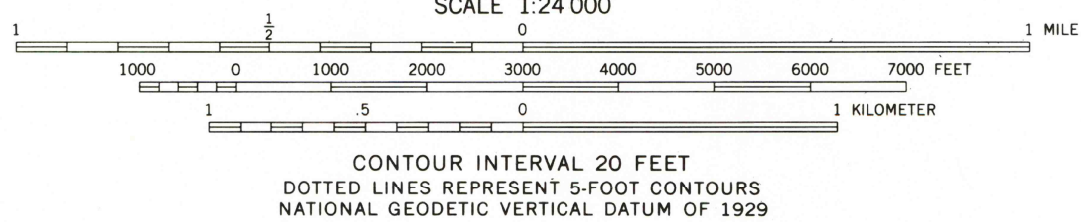
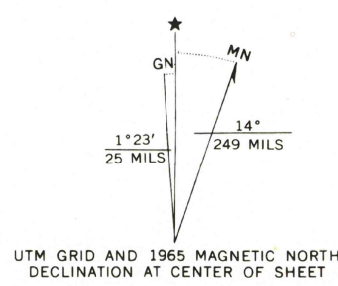


UNITED STATES
DEPARTMENT OF THE INTERIOR
GEOLOGICAL SURVEY

MOHAWK MTS. SE QUADRANGLE
ARIZONA—YUMA CO.
7.5 MINUTE SERIES (TOPOGRAPHIC)



Mapped, edited, and published by the Geological Survey
Control by USGS and USC&GS
Topography by photogrammetric methods from aerial
photographs taken 1961. Field checked 1965
Polyconic projection. 1927 North American datum
10,000-foot grid based on Arizona coordinate system,
west zone
1000-meter Universal Transverse Mercator grid ticks,
zone 12, shown in blue
To place on the predicted North American Datum 1983
move the projection lines 5 meters south and
70 meters east as shown by dashed corner ticks
Where omitted land lines have not been established
There may be private inholdings within the boundaries of
the National or State reservations shown on this map



THIS MAP COMPLIES WITH NATIONAL MAP ACCURACY STANDARDS
FOR SALE BY U. S. GEOLOGICAL SURVEY, DENVER, COLORADO 80225, OR RESTON, VIRGINIA 22092
A FOLDER DESCRIBING TOPOGRAPHIC MAPS AND SYMBOLS IS AVAILABLE ON REQUEST



Map photoinspected 1980
No major culture or drainage changes observed

MOHAWK MTS. SE, ARIZ.
32113-E5-TF-024
PHOTOINSPECTED 1980
1965

DMA 3249 II SE—SERIES V898