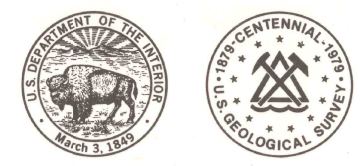


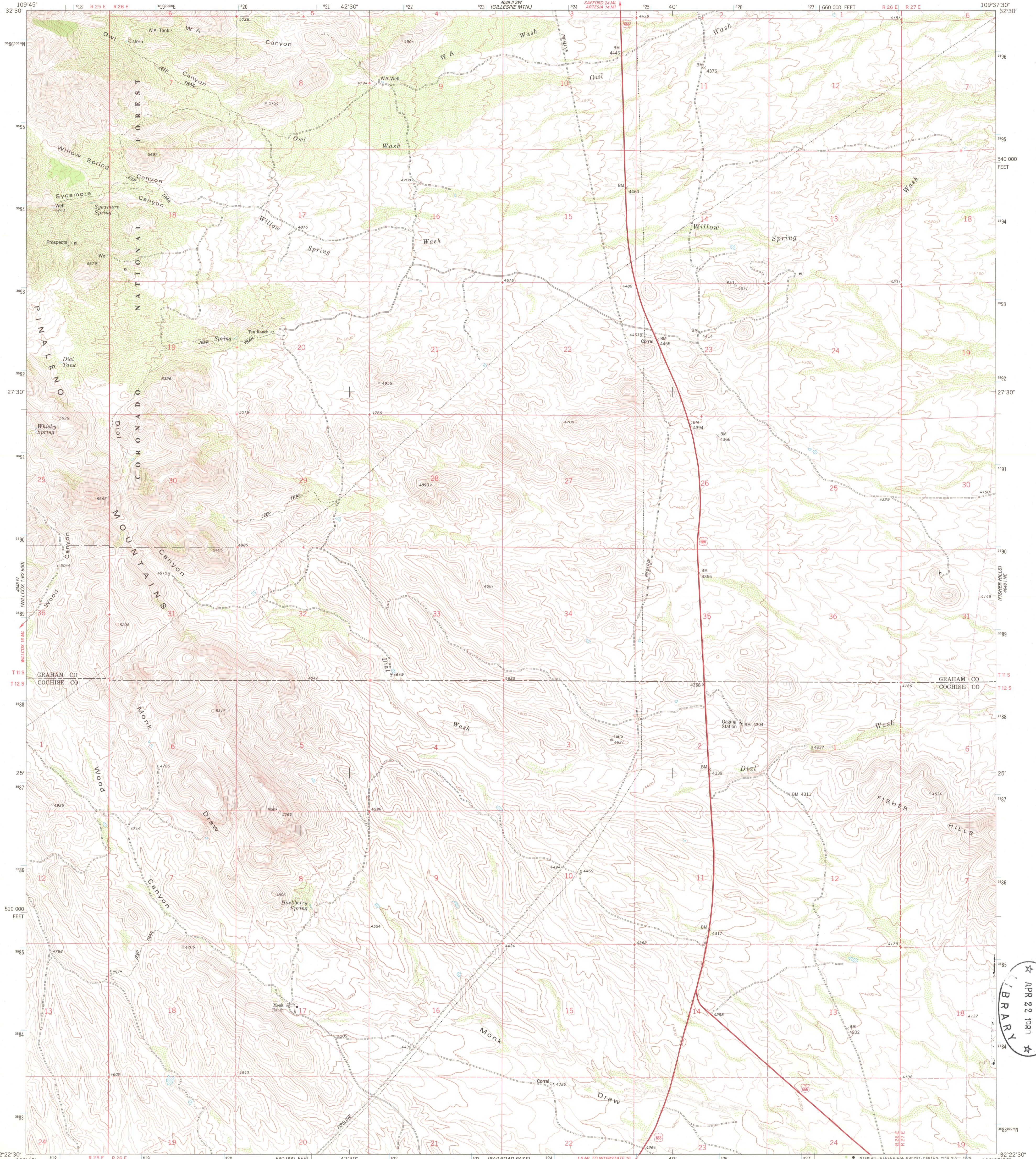
500 FEET
WILCOX 1:62,500

UNITED STATES
DEPARTMENT OF THE INTERIOR
GEOLOGICAL SURVEY

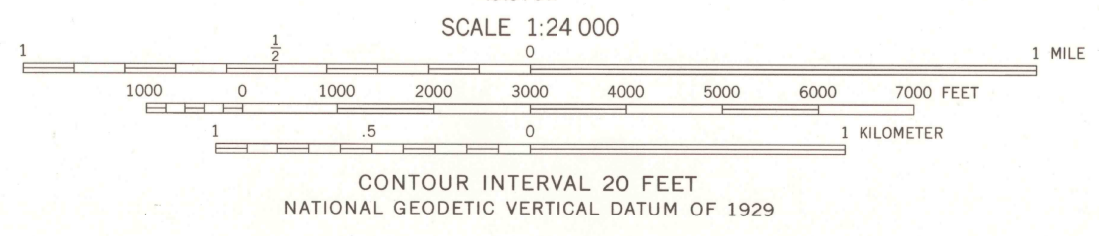
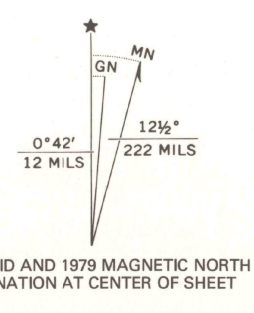


MONK DRAW QUADRANGLE
ARIZONA
7.5 MINUTE SERIES (TOPOGRAPHIC)
NW/4 LUZENA 18' QUADRANGLE

500 FEET
WILCOX 1:62,500



Mapped, edited, and published by the Geological Survey
Control by USGS and NOS/NOAA
Topography by photogrammetric methods from aerial photographs taken 1973. Field checked 1974
Map edited 1979
Projection and 10,000-foot grid ticks: Arizona coordinate system, east zone (transverse Mercator)
1000-meter Universal Transverse Mercator grid ticks, zone 12, shown in blue. 1927 North American Datum
To place on the predicted North American Datum 1983 move the projection lines 7 meters south and 59 meters east as shown by dashed corner ticks
Where omitted, land lines have not been established
There may be private inholdings within the boundaries of the National or State reservations shown on this map



ROAD CLASSIFICATION

Primary highway, hard surface	Light-duty road, hard or improved surface
Secondary highway, hard surface	Unimproved road
Interstate Route	U. S. Route
	State Route

THIS MAP COMPLIES WITH NATIONAL MAP ACCURACY STANDARDS
FOR SALE BY U.S. GEOLOGICAL SURVEY, DENVER, COLORADO 80225, OR RESTON, VIRGINIA 22092
A FOLDER DESCRIBING TOPOGRAPHIC MAPS AND SYMBOLS IS AVAILABLE ON REQUEST



MONK DRAW, ARIZ.
NW/4 LUZENA 18' QUADRANGLE
N3222.5-W10937.5/7.5
1979
DMA 4048 1 NW-SERIES V989

