

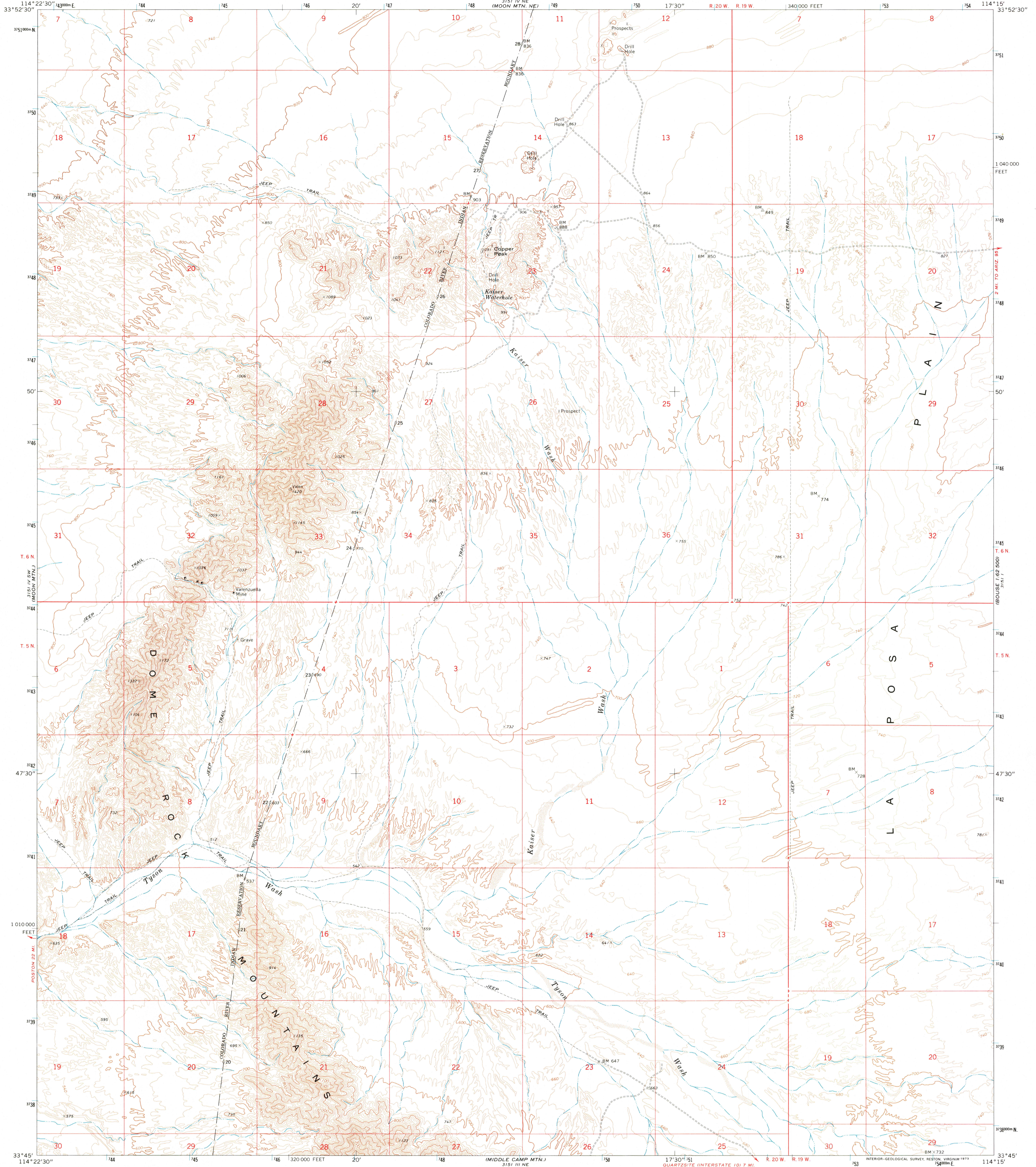
3151 IV SE  
MOON MTN.



U.S. DEPARTMENT OF THE INTERIOR  
U.S. GEOLOGICAL SURVEY

MOON MTN. SE QUADRANGLE  
ARIZONA-YUMA CO.  
7.5 MINUTE SERIES (TOPOGRAPHIC)  
SE/4 MOON MTN. 15' QUADRANGLE

3151 IV SE  
MOON MTN.

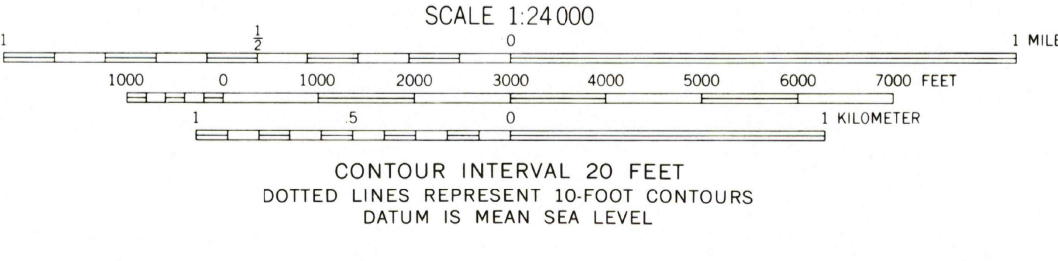
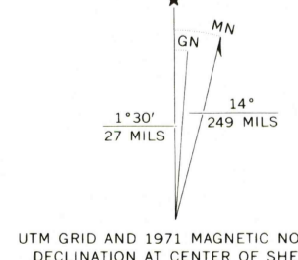


Mapped, edited, and published by the Geological Survey  
Control by USGS and USC&GS  
Topography by photogrammetric methods from aerial  
photographs taken 1970. Field checked 1971  
Projection and 10,000-foot grid ticks: Arizona coordinate  
system, west zone (transverse Mercator)  
1000-meter Universal Transverse Mercator grid ticks,  
zone 11, shown in blue. 1927 North American datum

3151 IV SW  
MOON MTN.

3151 III NE  
MIDDLE CAMP MTN.

3151 IV SE  
MOON MTN.



ROAD CLASSIFICATION

Primary highway, hard surface	Light duty road, hard or improved surface
Secondary highway, hard surface	Unimproved road
Interstate Route	U. S. Route
	State Route

THIS MAP COMPLIES WITH NATIONAL MAP ACCURACY STANDARDS  
FOR SALE BY U.S. GEOLOGICAL SURVEY, P.O. BOX 25286, DENVER, COLORADO 80225  
A FOLDER DESCRIBING TOPOGRAPHIC MAPS AND SYMBOLS IS AVAILABLE ON REQUEST

RECEIVED  
DEC 31 2000

MOON MTN. SE, ARIZ.  
SE/4 MOON MTN. 15' QUADRANGLE  
N3345-W11415/7.5  
1971  
AMS 3151 IV SE-SERIES V898

