

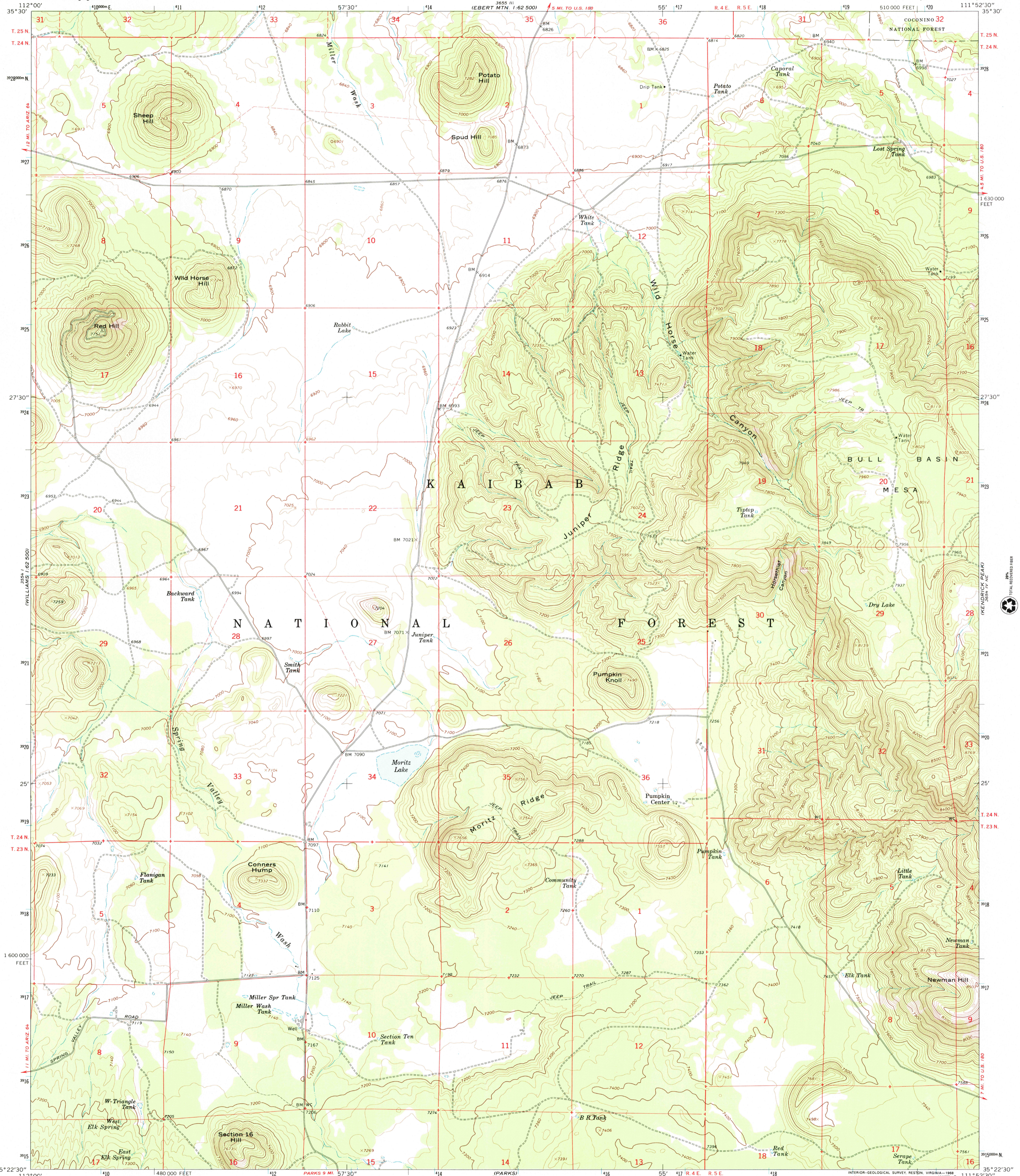
WAL E 1:62 500

WAL E 1:62 500

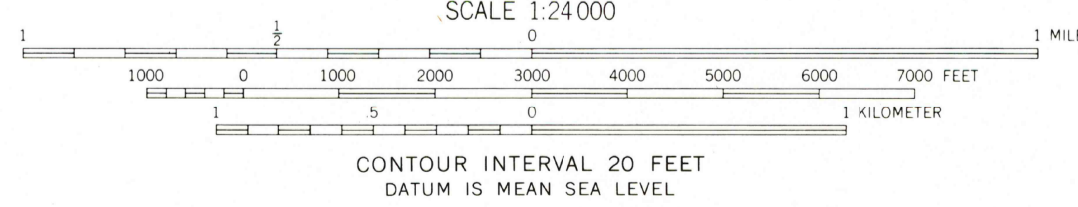
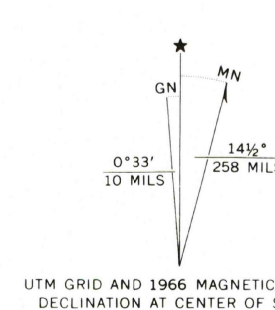


U.S. DEPARTMENT OF THE INTERIOR
U.S. GEOLOGICAL SURVEY

MORITZ RIDGE QUADRANGLE
ARIZONA-COCONINO CO.
7.5 MINUTE SERIES (TOPOGRAPHIC)



Mapped, edited, and published by the Geological Survey
Control by USGS and USC&GS
Topography by photogrammetric methods from aerial
photographs taken 1964. Field checked 1966
Polyconic projection. 1927 North American datum
10,000-foot grid based on Arizona coordinate system, central zone
1000-meter Universal Transverse Mercator grid ticks,
zone 12, shown in blue
Fine red dashed lines indicate selected fence lines



ROAD CLASSIFICATION
Light duty ——— Unimproved dirt - - - - -
RECEIVED
AUG 31 2001
HISTORICAL MAP ARCHIVES
MORITZ RIDGE, ARIZ.
N3522.5-W11152.5/7.5
1966
AMS 3654 IV NW-SERIES V898

