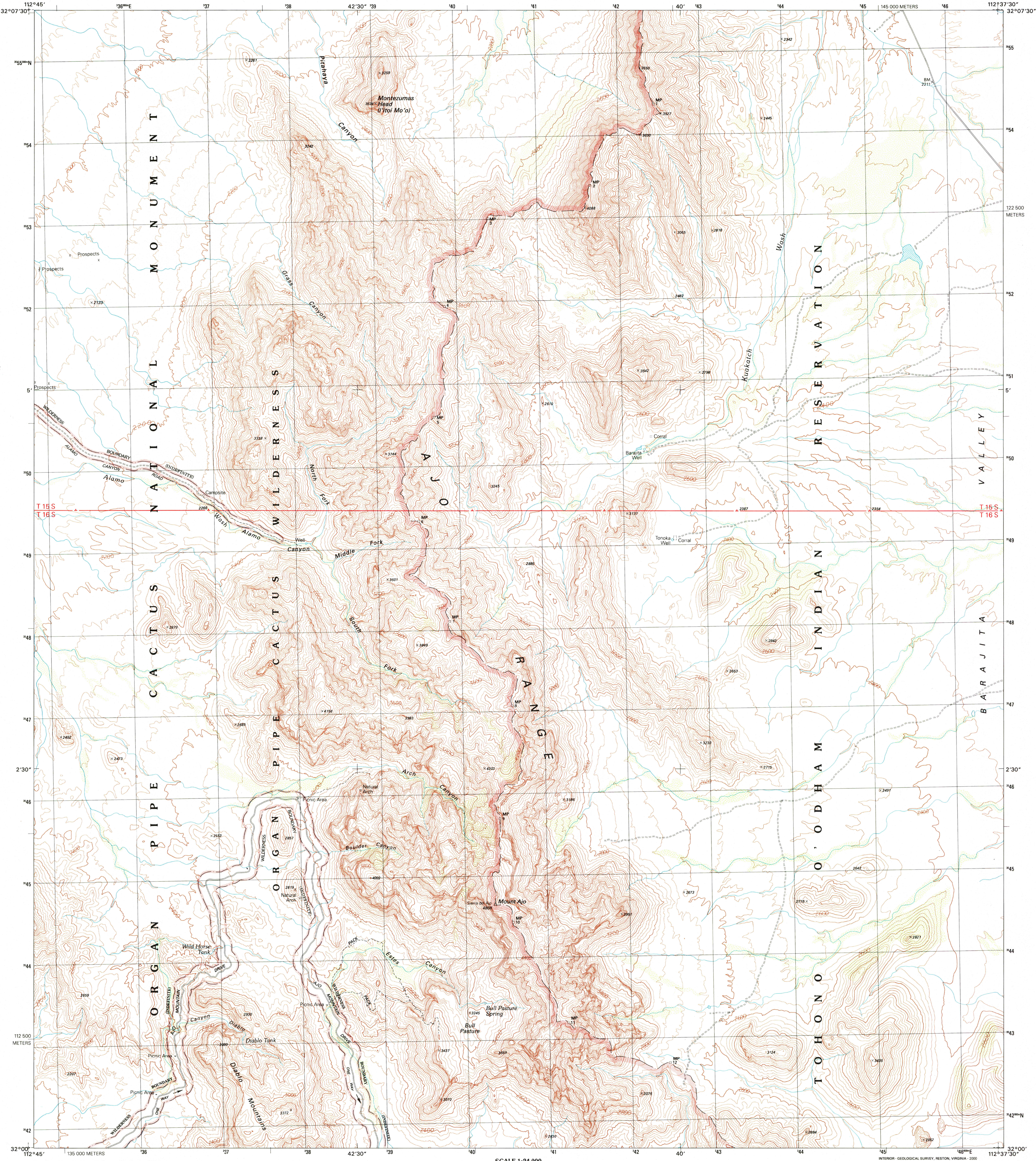


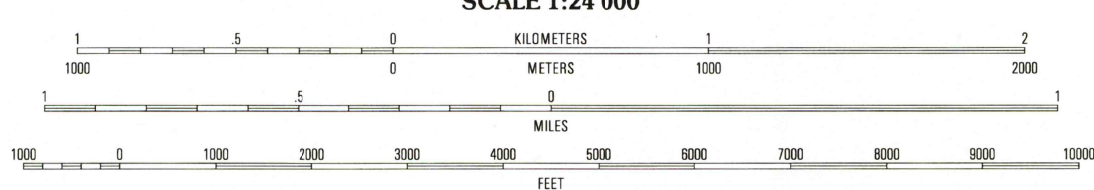
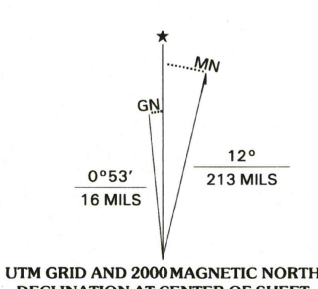


U.S. DEPARTMENT OF THE INTERIOR
U.S. GEOLOGICAL SURVEY

MOUNT AJO QUADRANGLE
ARIZONA-PIMA CO.
7.5-MINUTE SERIES (TOPOGRAPHIC)



Produced by the United States Geological Survey
Topography compiled 1961. Planimetry derived from imagery taken 1996. Public Land Survey System and survey control current as of 1988.
North American Datum of 1983 (NAD 83). Projection and 1000-meter grid: Universal Transverse Mercator, zone 12. 2500-meter ticks: Arizona Coordinate System of 1983 (central zone).
North American Datum of 1927 (NAD 27) is shown by dashed corner ticks. The values of the shift between NAD 83 and NAD 27 for 7.5-minute intersections are obtainable from National Geodetic Survey NADCON software.
There may be private inholdings within the boundaries of the National or State reservations shown on this map.
Where omitted, land lines have not been established.
Landmark buildings verified 1988.



CONTOUR INTERVAL 40 FEET
SUPPLEMENTARY CONTOUR INTERVAL 20 FEET
NATIONAL GEODETIC VERTICAL DATUM OF 1929
TO CONVERT FROM FEET TO METERS, MULTIPLY BY 0.3048

THIS MAP COMPLIES WITH NATIONAL MAP ACCURACY STANDARDS
FOR SALE BY U.S. GEOLOGICAL SURVEY, P.O. BOX 25286, DENVER, COLORADO 80225
A FOLDER DESCRIBING TOPOGRAPHIC MAPS AND SYMBOLS IS AVAILABLE ON REQUEST



QUADRANGLE LOCATION

1	2	3
4	5	6
7	8	9

- 1 Armenta Well
- 2 Guntight
- 3 Hotson Vc
- 4 Tillson Peak
- 5 Gu Vo
- 6 Lukeville
- 7 Diaz Peak
- 8 Pie Oak

ADJOINING 7.5' QUADRANGLE NAMES

ROAD CLASSIFICATION
Primary highway
hard surface
Secondary highway
hard surface
Unimproved road
Light-duty road, hard or
improved surface
Unimproved road
Interstate Route
U.S. Route
State Route

RECEIVED

SEP 30 2000

USGS NWED
HISTORICAL MAP ARCHIVES

MOUNT AJO, AZ
1996

NIMA 3448 II SW-SERIES V898

