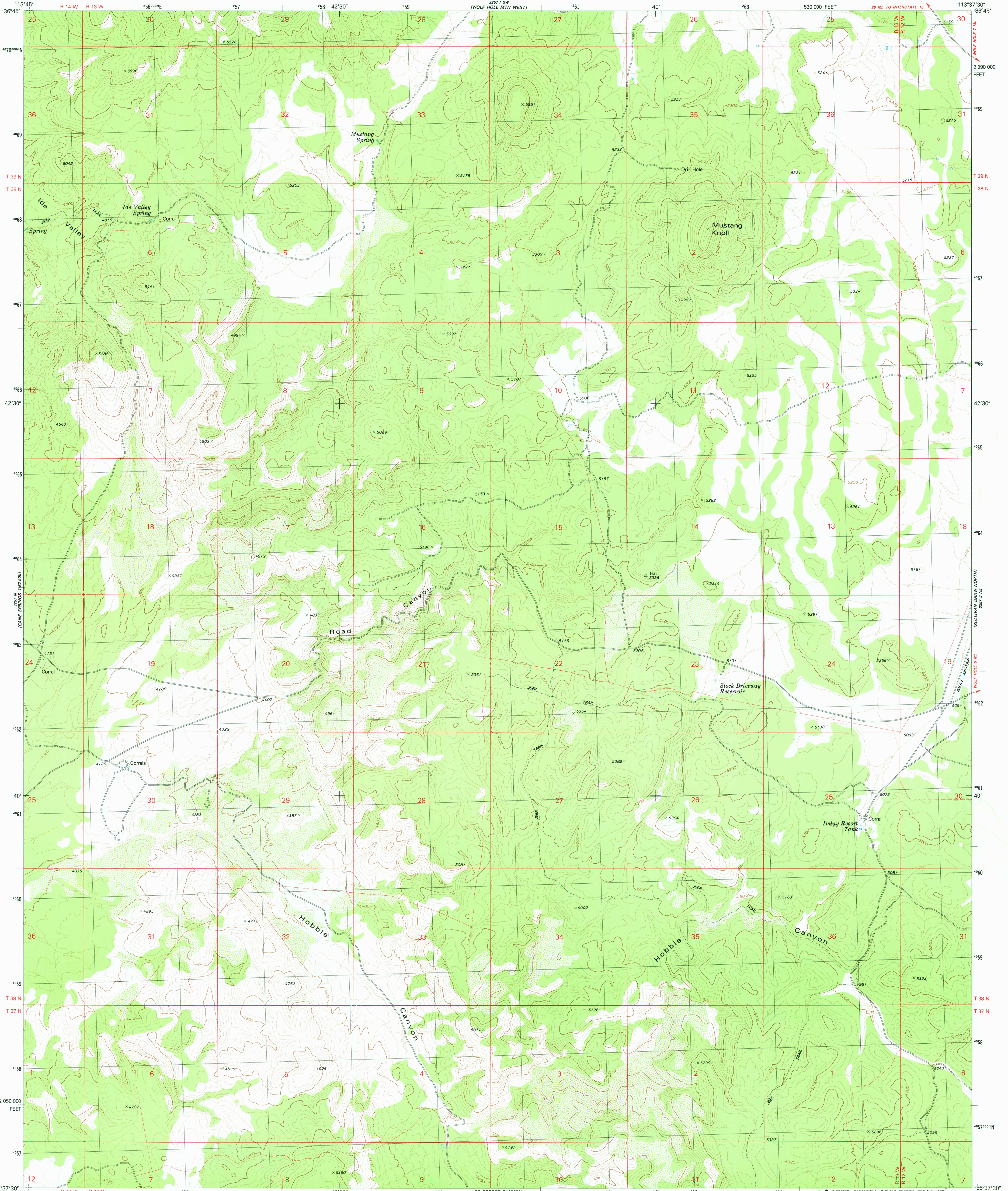


UNITED STATES  
DEPARTMENT OF THE INTERIOR  
GEOLOGICAL SURVEY

MUSTANG KNOLL QUADRANGLE  
ARIZONA—MOHAVE CO.  
7.5 MINUTE SERIES (TOPOGRAPHIC)



Mapped, edited, and published by the Geological Survey

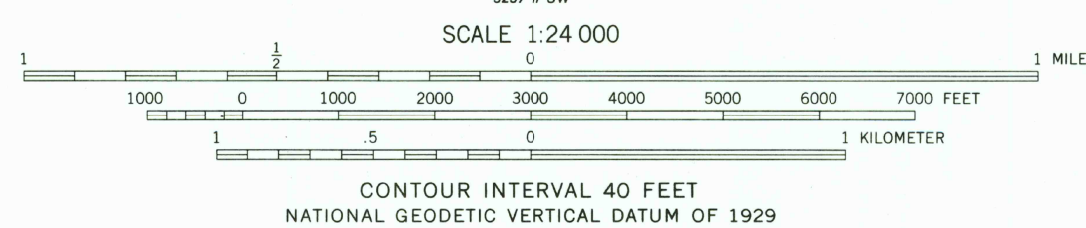
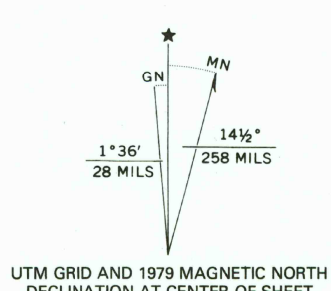
Control by USGS and NOS/NOAA

Topography by photogrammetric methods from aerial photographs taken 1974. Field checked 1975  
Map edited 1979

Projection and 10,000-foot grid ticks: Arizona coordinate system, west zone (transverse Mercator)  
1000-meter Universal Transverse Mercator grid, zone 12  
1927 North American Datum

To place on the predicted North American Datum 1983 move the projection lines 5 meters north and 70 meters east as shown by dashed corner ticks

Fine red dashed lines indicate selected fence and field lines where generally visible on aerial photographs. This information is unchecked



ROAD CLASSIFICATION

Primary highway, hard surface	Light-duty road, hard or improved surface
Secondary highway, hard surface	Unimproved road
Interstate Route	U. S. Route
	State Route

USGS  
Historical File  
Topographic Division

MUSTANG KNOLL, ARIZ.  
N3637.5-W11337.5/7.5

1979

DMA 3257 II NW—SERIES V898

MAY 20 1980

THIS MAP COMPLIES WITH NATIONAL MAP ACCURACY STANDARDS  
FOR SALE BY U. S. GEOLOGICAL SURVEY, DENVER, COLORADO 80225, OR RESTON, VIRGINIA 22092  
A FOLDER DESCRIBING TOPOGRAPHIC MAPS AND SYMBOLS IS AVAILABLE ON REQUEST

2300