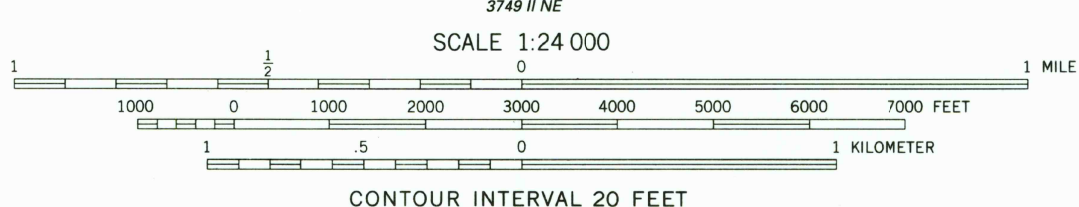
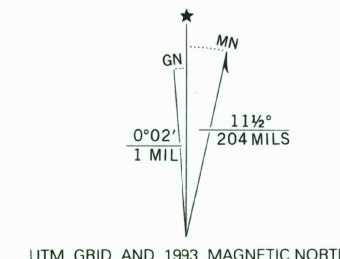


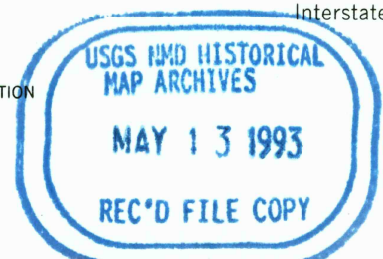
Produced by the United States Geological Survey  
Control by USGS and NOS/NOAA  
Compiled from aerial photographs taken 1962  
Field checked 1966  
North American Datum of 1927 (NAD 27). Projection and 10000-foot grid ticks: Arizona Coordinate System, central zone (Transverse Mercator). 1000-meter Universal Transverse Mercator grid ticks, zone 12, shown in blue  
The difference between NAD 27 and North American Datum of 1983 (NAD 83) for 7.5 minute intersections is given in USGS Bulletin 1875. The NAD 83 is shown by dashed corner ticks  
Fine red dashed lines indicate selected fence and field lines where generally visible on aerial photographs. This information is unchecked  
Photorevised from 1991 source; no major culture or drainage changes observed. Names verified 1993



ROAD CLASSIFICATION

Primary highway, hard surface	Light-duty road, hard or improved surface
Secondary highway, hard surface	Unimproved road
Interstate Route	U.S. Route
	State Route

THIS MAP COMPLIES WITH NATIONAL MAP ACCURACY STANDARDS  
FOR SALE BY U.S. GEOLOGICAL SURVEY  
DENVER, COLORADO 80225, OR RESTON, VIRGINIA 22092  
A FOLDER DESCRIBING TOPOGRAPHIC MAPS AND SYMBOLS IS AVAILABLE ON REQUEST



NINETY-SIX HILLS SE, ARIZ.  
32111-G1-TF-024  
1966  
MINOR REVISION 1993  
DMA 3749 I SE-SERIES 1/898