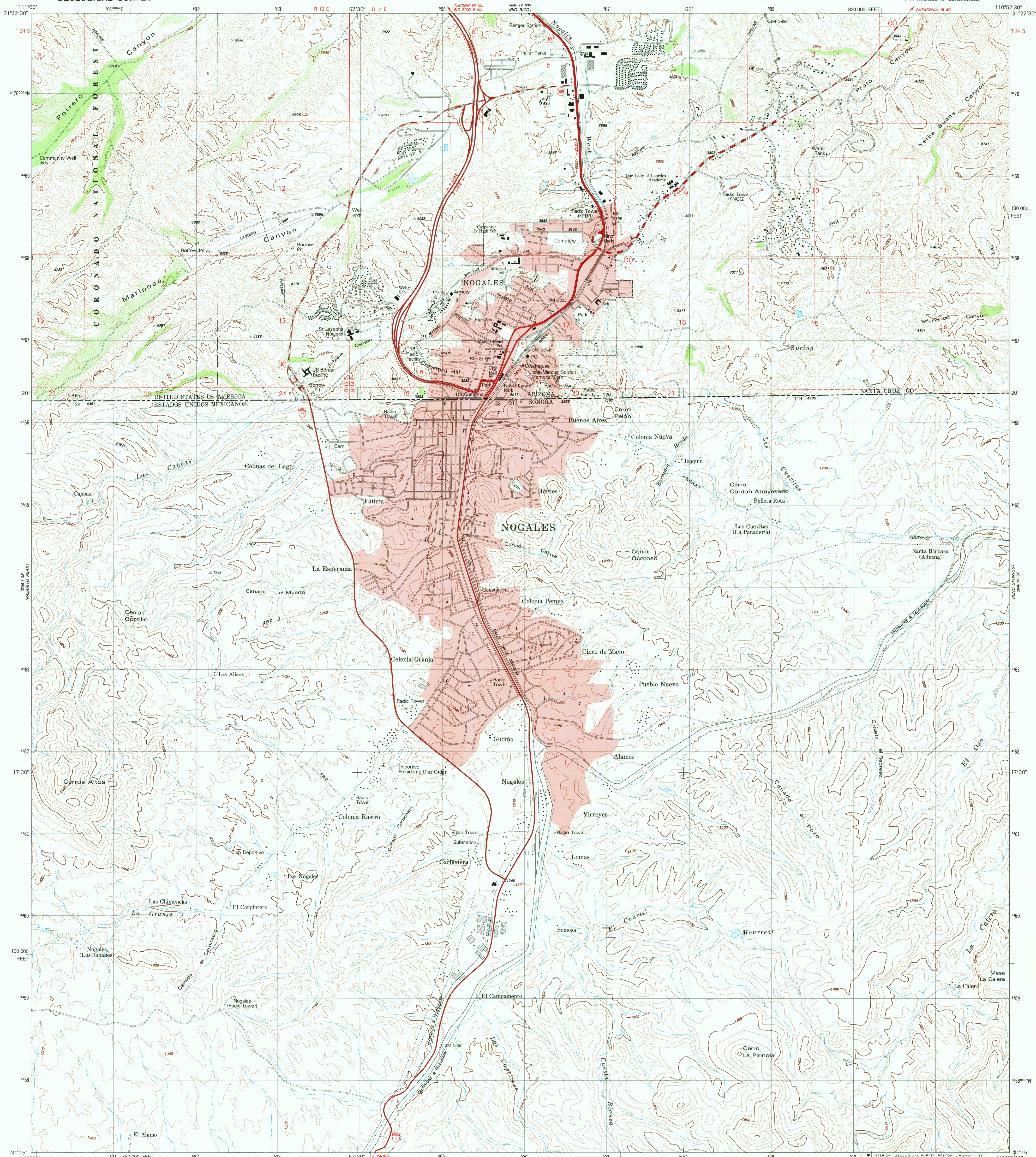
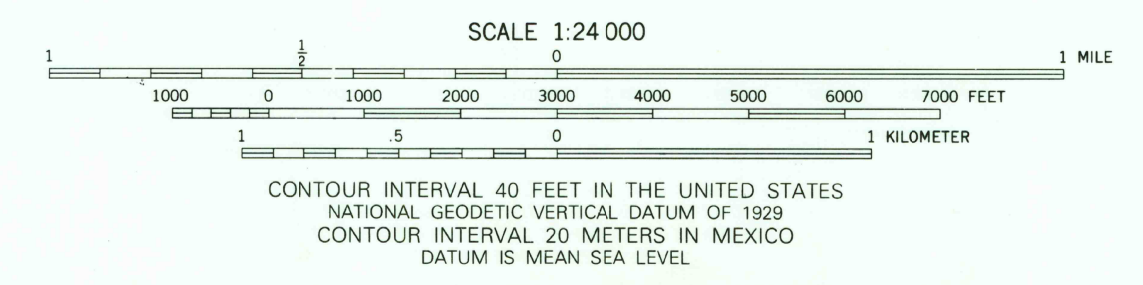
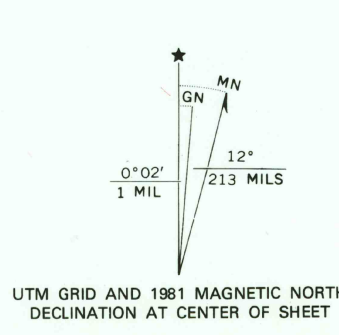


UNITED STATES  
DEPARTMENT OF THE INTERIOR  
GEOLOGICAL SURVEY

NOGALES QUADRANGLE  
ARIZONA-SONORA  
7.5 MINUTE SERIES (TOPOGRAPHIC)



Produced by the United States Geological Survey  
Control by USGS, NOS/NOAA, International Boundary and Water Commission, and  
Dirección General de Geografía del Territorio Nacional (DIGETENAL)  
U.S. portion compiled by photogrammetric methods from aerial photographs  
taken 1975. Field checked 1976. Map edited 1981  
Mexico portion copied from DIGETENAL 1:50 000-scale map, Nogales H12B31 dated 1979  
Projection and 10,000-foot grid ticks: Arizona coordinate  
system, central zone (transverse Mercator)  
1000-meter Universal Transverse Mercator grid, zone 12  
1927 North American Datum  
To place on the predicted North American Datum 1983  
move the projection lines 10 meters south and  
62 meters east as shown by dashed corner ticks  
Red tint indicates areas in which only landmark buildings are shown  
There may be private inholdings within the boundaries of  
the National or State reservations shown on this map



THE U.S. PORTION OF THIS MAP COMPLIES WITH NATIONAL MAP ACCURACY STANDARDS  
FOR SALE BY U.S. GEOLOGICAL SURVEY, DENVER, COLORADO 80225 OR RESTON, VIRGINIA 22092  
AND BY CENTRO DE ASESORIA Y VENTA DE INFORMACIÓN ESTADÍSTICA Y CARTOGRÁFICA  
BALDERAS, #71, MEZANINE, MEXICO 1, D.F.  
A FOLDER DESCRIBING U.S. TOPOGRAPHIC MAPS AND SYMBOLS IS AVAILABLE FROM USGS



- ROAD CLASSIFICATION
- Primary highway, hard surface
  - Secondary highway, hard surface
  - Light-duty road, hard or improved surface
  - Unimproved road
  - Interstate Route
  - U. S. Route
  - State Route
  - Mexico Routes

NOGALES, ARIZ.-SONORA  
SW/4 NOGALES 15' QUADRANGLE  
N3115-W11052.5/7.5  
1981

DMA 3646 IV SW--SERIES Y898

JUL 20 1981  
1900