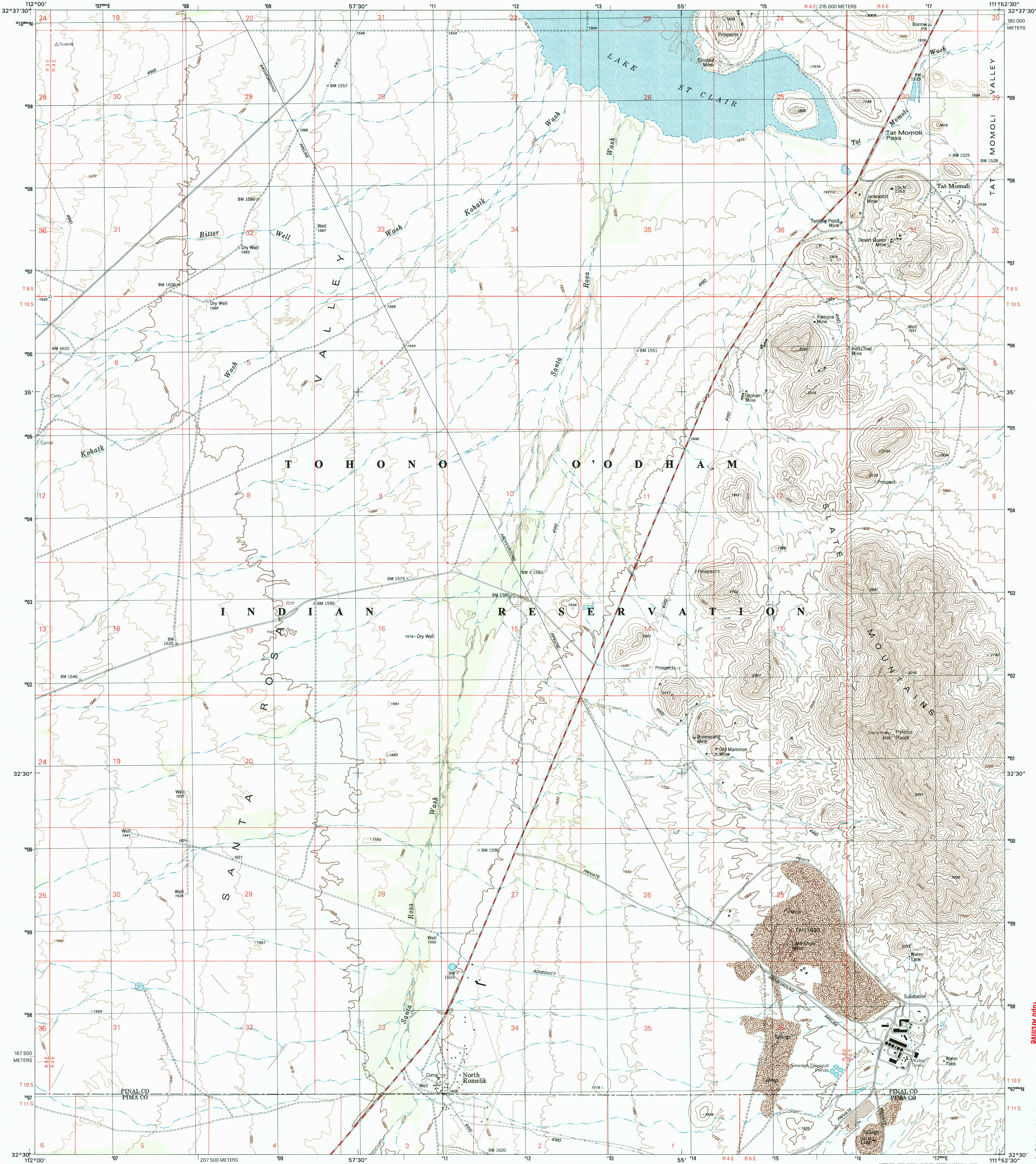


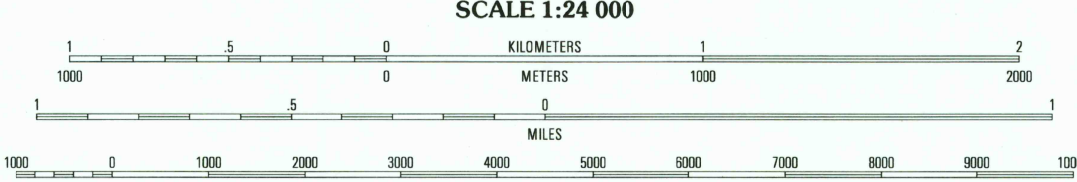
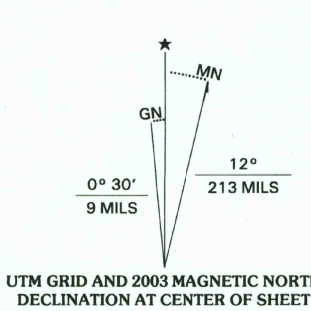


U.S. DEPARTMENT OF THE INTERIOR  
U.S. GEOLOGICAL SURVEY

NORTH KOMELIK QUADRANGLE  
ARIZONA  
7.5-MINUTE SERIES (TOPOGRAPHIC)



Produced by the United States Geological Survey  
Topography compiled 1976. Planimetry derived from imagery  
taken 1996 and other sources. Public Land Survey System and  
survey control current as of 1977. Boundaries current as of 2001  
North American Datum of 1983 (NAD 83). Projection and  
1 000-meter grid: Universal Transverse Mercator, zone 12  
2 500-meter ticks: Arizona Coordinate System of 1983  
(central zone)  
North American Datum of 1927 (NAD 27) is shown by dashed  
corner ticks. The values of the shift between NAD 83 and NAD 27  
for 7.5-minute intersections are obtainable from National Geodetic  
Survey NADCON software  
Where omitted, land lines have not been established  
There may be private inholdings within the boundaries of the  
National or State reservations shown on this map  
Houses of worship, schools, and other labeled buildings verified 1977



CONTOUR INTERVAL 40 FEET  
SUPPLEMENTARY CONTOUR INTERVAL 10 FEET  
NATIONAL GEODETIC VERTICAL DATUM OF 1929  
(TO CONVERT ELEVATIONS TO THE NORTH AMERICAN VERTICAL DATUM OF 1988, ADD 2 FEET)  
TO CONVERT FROM FEET TO METERS, MULTIPLY BY 0.3048

THIS MAP COMPLIES WITH NATIONAL MAP ACCURACY STANDARDS  
FOR SALE BY U.S. GEOLOGICAL SURVEY, P.O. BOX 25286, DENVER, COLORADO 80225  
A FOLDER DESCRIBING TOPOGRAPHIC MAPS AND SYMBOLS IS AVAILABLE ON REQUEST



QUADRANGLE LOCATION

|   |   |   |
|---|---|---|
| 1 | 2 | 3 |
| 4 | 5 | 6 |
| 7 | 8 |   |

1 Vekol Mountains NE  
2 Vekol Mountains  
3 Silver Reef Mountains  
4 Kohatk  
5 Silver Reef Mountains SE  
6 Drew Spring Well  
7 Santa Rosa Mountains NW  
8 Santa Rosa Mountains NE

ADJOINING 7.5' QUADRANGLES

ROAD CLASSIFICATION

|                    |                          |
|--------------------|--------------------------|
| Primary highway    | Light-duty road, hard or |
| hard surface ..... | improved surface .....   |
| Secondary highway  | Unimproved road .....    |
| hard surface ..... |                          |

Interstate Route U.S. Route State Route

NORTH KOMELIK, AZ  
1996

NIMA 3649 III SW-SERIES V898

USGS Library  
Reston, VA  
Topo Archive

